

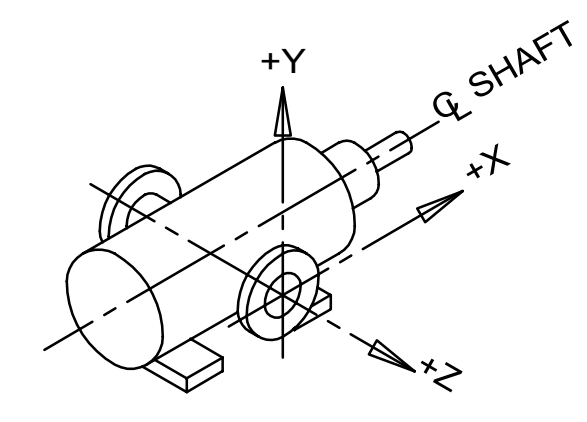
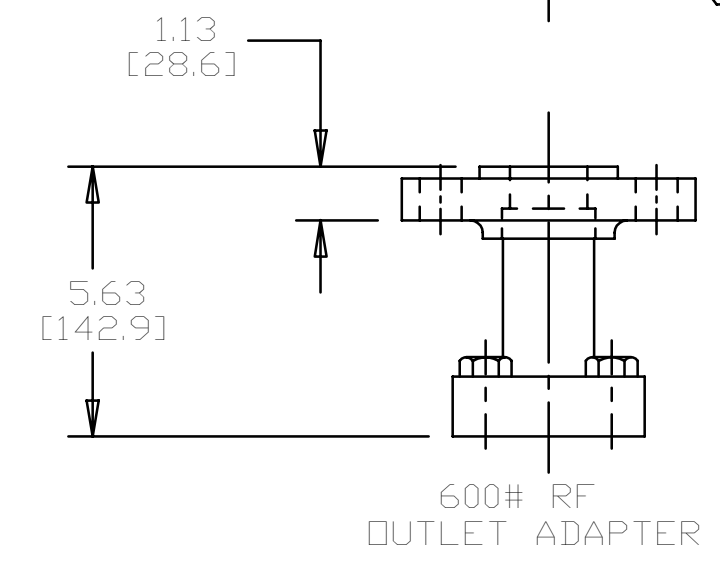
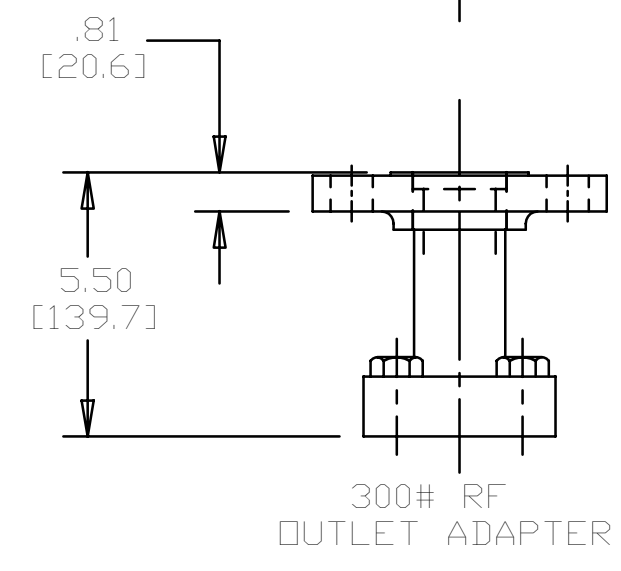
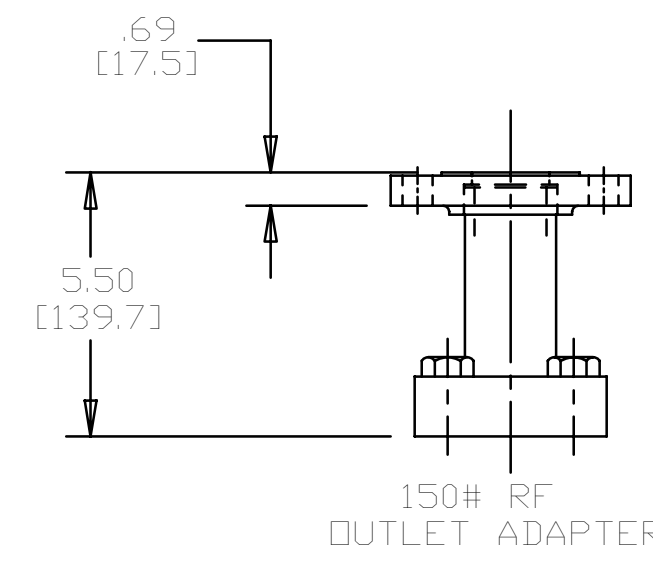
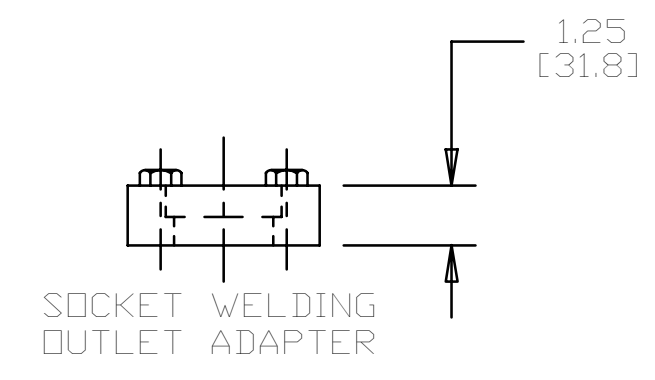
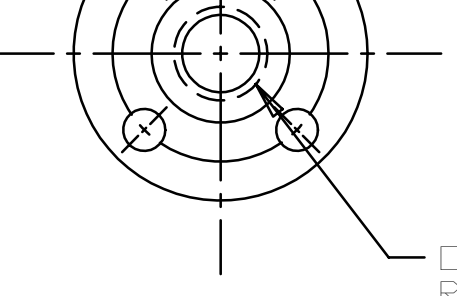
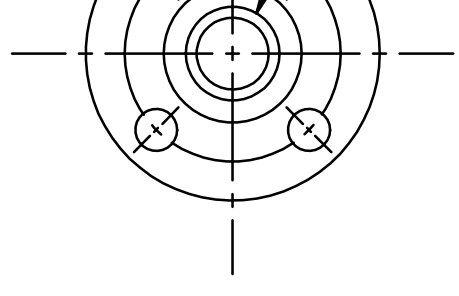
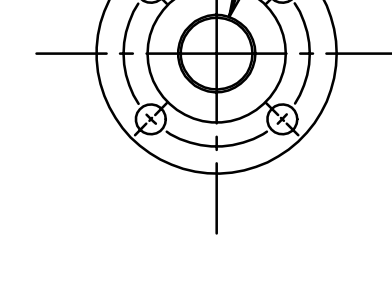
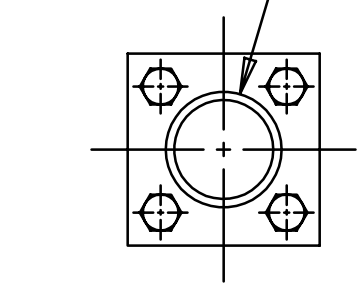
REVISION HISTORY					
CHG NO	ZONE	REV	DESCRIPTION	DATE	BY / APPROVED
08-0435	ALL	3	ADDED STANDARD BLOCK	10-22-08	ERH / ERH

OUTLET 1-1/2" SIZE SOCKET WELDING ADAPTER Ø1.915 [48.64] SOCKET .66 [16.8] DEEP

OUTLET 1-1/2" SIZE 150# ANSI B16.5 RAISED FACE FLANGE HOLES TO STRADDLE CENTERNES

OUTLET 1-1/2" SIZE 300# ANSI B16.5 RAISED FACE FLANGE HOLES TO STRADDLE CENTERNES

OUTLET 1-1/2" SIZE 600# ANSI B16.5 RAISED FACE FLANGE HOLES TO STRADDLE CENTERNES

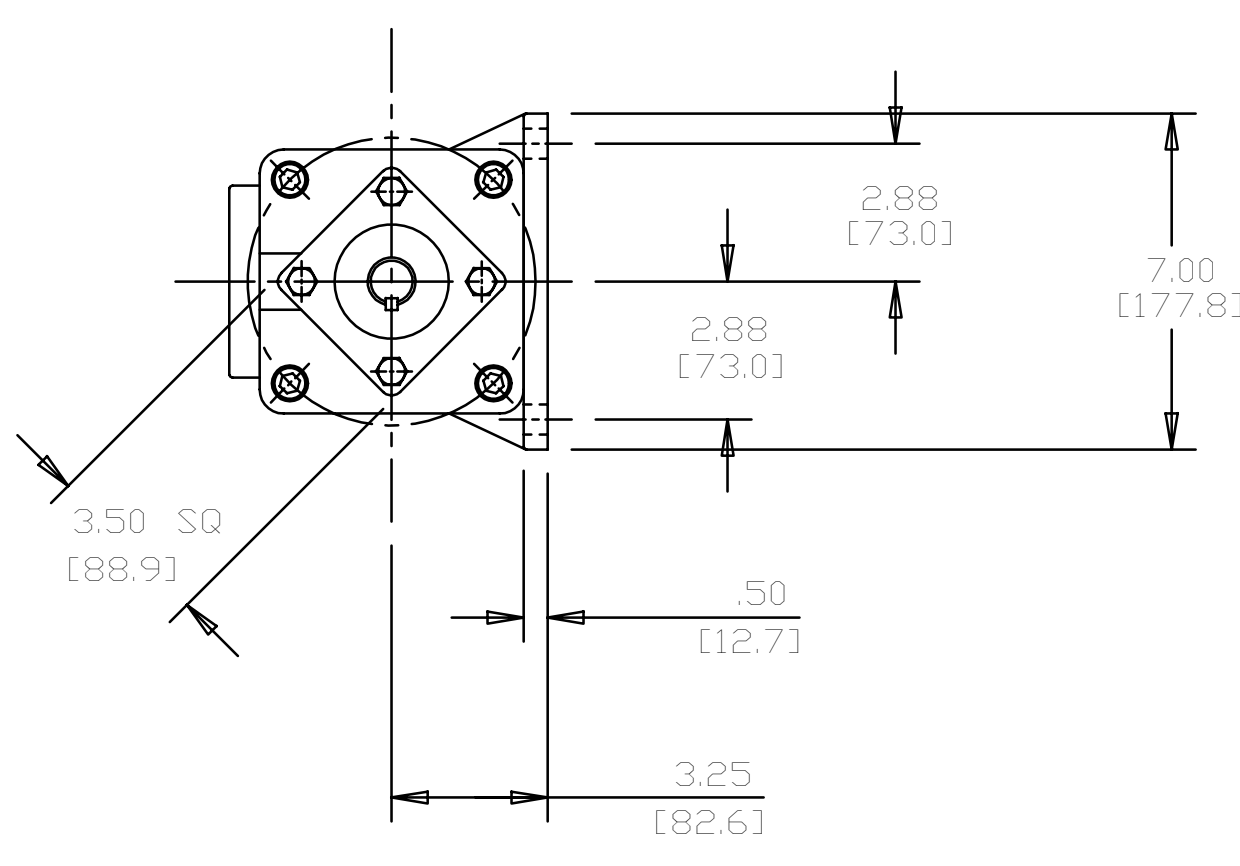
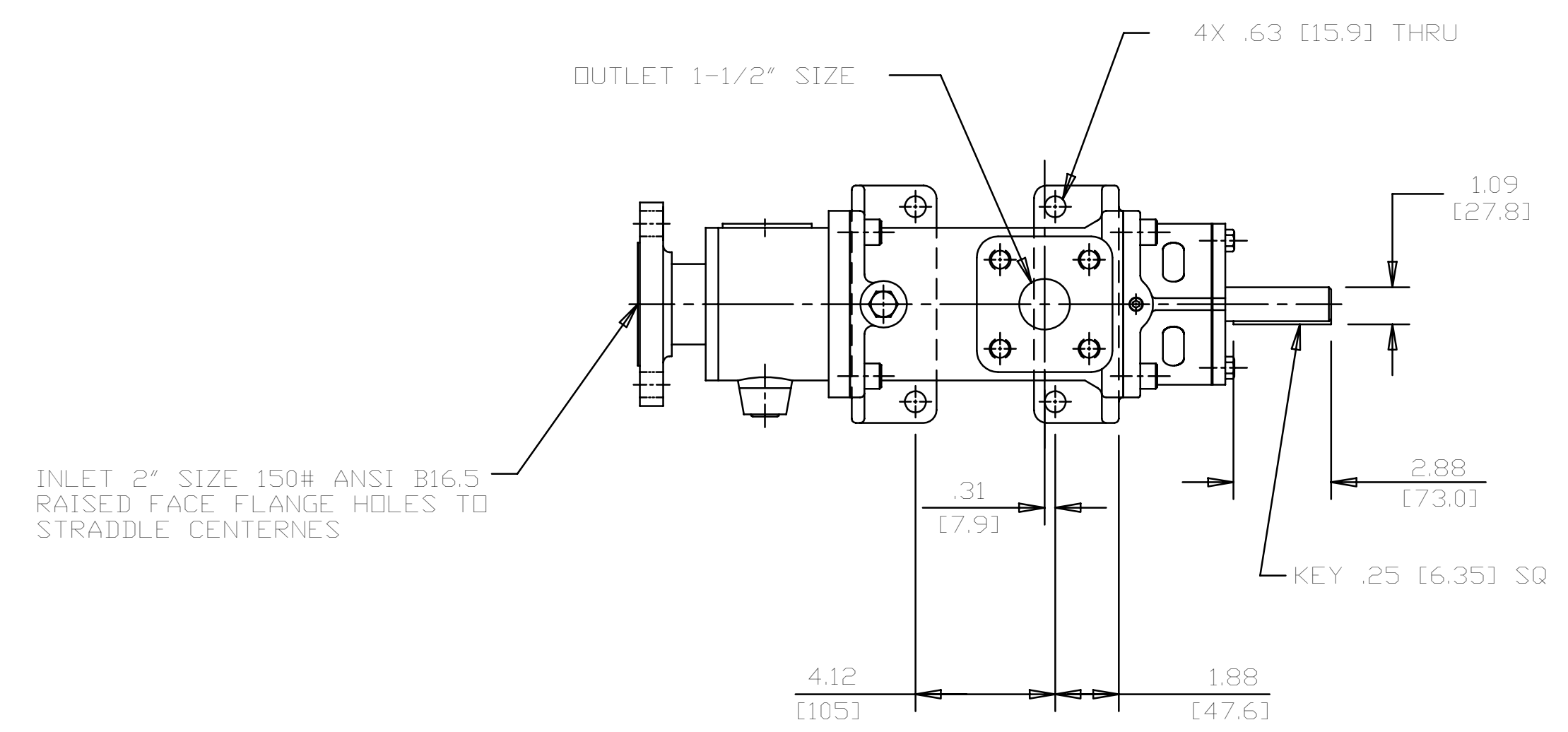


COORDINATE SYSTEM FOR MAXIMUM PUMP FORCES (F) AND MOMENTS (M)

INLET:
 FX= 188 LBF [836 N] MX= 313 LB FT [424 N.m]
 FY= 188 LBF [836 N] MY= 313 LB FT [424 N.m]
 FZ= 188 LBF [836 N] MZ= 313 LB FT [424 N.m]

OUTLET:
 FX= 113 LBF [500 N] MX= 188 LB FT [254 N.m]
 FY= 113 LBF [500 N] MY= 188 LB FT [254 N.m]
 FZ= 113 LBF [500 N] MZ= 188 LB FT [254 N.m]

FORCE AND MOMENT VALUES ARE RELATIVE TO CENTER OF INLET AND OUTLET PORT FACES.



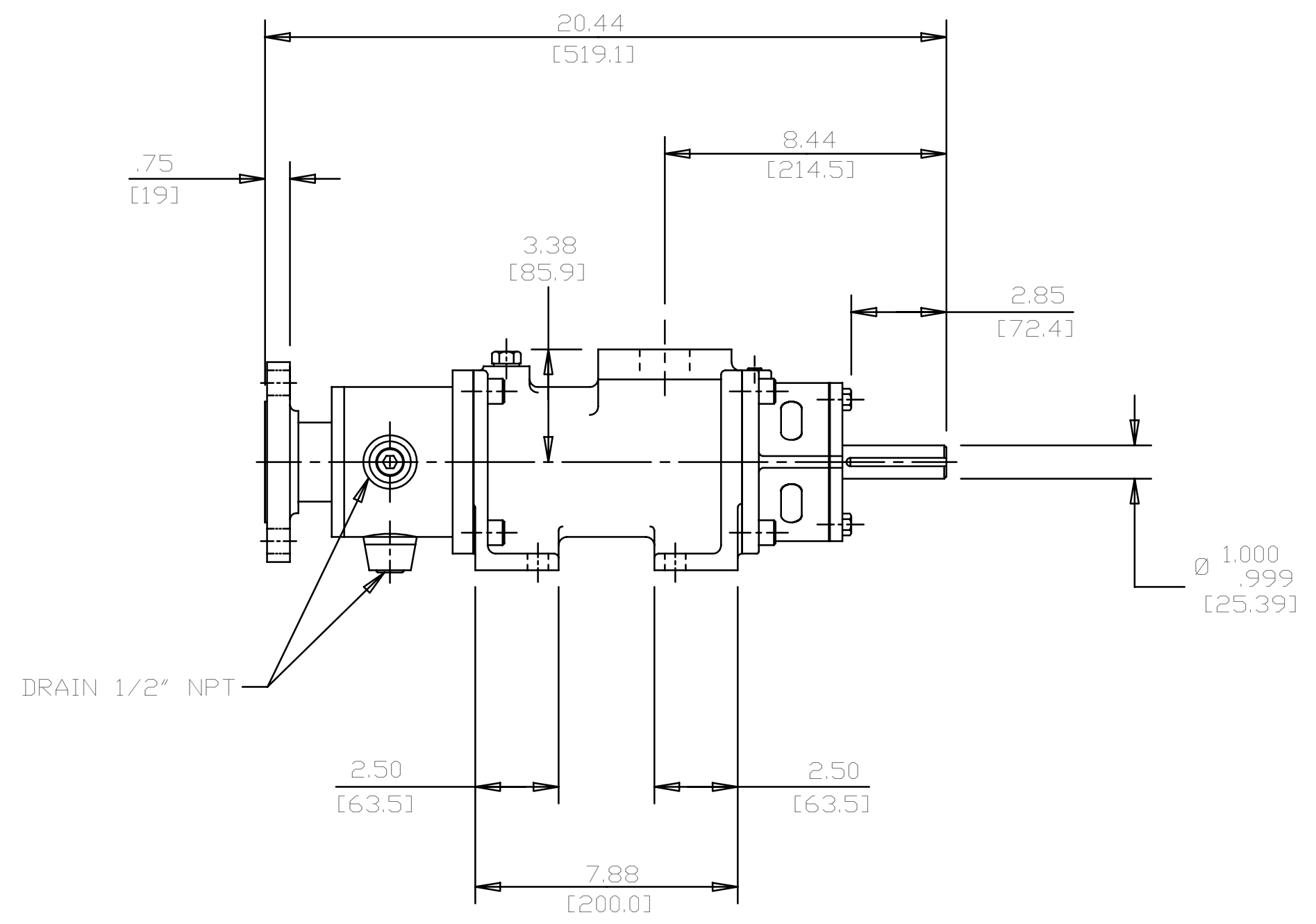
INLET 2" SIZE 150# ANSI B16.5 RAISED FACE FLANGE HOLES TO STRADDLE CENTERNES

OUTLET 1-1/2" SIZE 4X .63 [15.9] THRU

KEY .25 [6.35] SQ

DRAWING CERTIFICATION	
CUSTOMER NAME	-----
CUSTOMER PO NUMBER	-----
CUSTOMER PART NUMBER	-----
BOM NUMBER	-----
PUMP TYPE	-----
SHAFT ROTATION	-----
OUTLET ADAPTER	-----
OTHER INFORMATION	
CERTIFIED BY	-----
CERTIFIED DATE	-----
IMO ORDER NUMBER	-----
DATA REVISION NUMBER	-----

- NOTES:
- UNLESS OTHERWISE SPECIFIED, ALL DIMENSIONS ARE IN INCHES. DIMENSIONS IN [] ARE MILLIMETERS.
 - TO MAXIMIZE SEAL LIFE, SEAL VENT MUST BE ORIENTED UPWARD (12 O'CLOCK) WHEN PUMP IS INSTALLED HORIZONTALLY. THIS IS NORMAL VENT ORIENTATION WHEN PUMP FEET ARE ORIENTED DOWNWARD. SEAL VENT ORIENTATION IS NOT CRITICAL WHEN PUMP IS INSTALLED WITH SHAFT VERTICALLY UPWARD.
 - PORT, FOOT, AND SEAL VENT ORIENTATIONS ARE SUPPLIED AS SHOWN ON DRAWING UNLESS OTHERWISE SPECIFIED.



DRAWN	WLW	10-24-95
CHECKED	WLW	10-24-95
APPROVED	MJC	10-25-95

Imo Pump
 1710 Airport Road
 PO Box 5020
 Monroe, NC USA
 28111.5020

UNLESS OTHERWISE SPECIFIED ANSI Y14.5M-1994		TITLE OUTLINE STANDARD	
COMMENTS: SUCTION STRAINER AND DISCHARGE RELIEF VALVE MUST BE PROVIDED. ALIGNMENT: UNITS ARE ACCURATELY ALIGNED AT THE FACTORY. ALIGNMENT SHOULD BE CHECKED BEFORE STARTING TO ENSURE THAT IT IS STILL WITHIN .005 (0.125) MM. PRE-STARTING: FLUSH SUCTION PIPING BEFORE CONNECTING PUMP. PRIME AND VENT PUMP. READ INSTRUCTION MANUAL FOR DETAILS BEFORE STARTING.	FIRST ORDER 800261	SIZE D	CAGE CODE 59180
DATE 3204/159	SCALE 1/4	WEIGHT 70 LBS [31.7 kg]	SHEET 1 OF 1