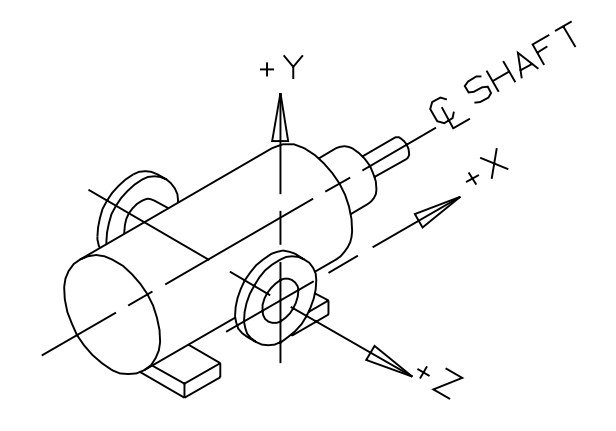
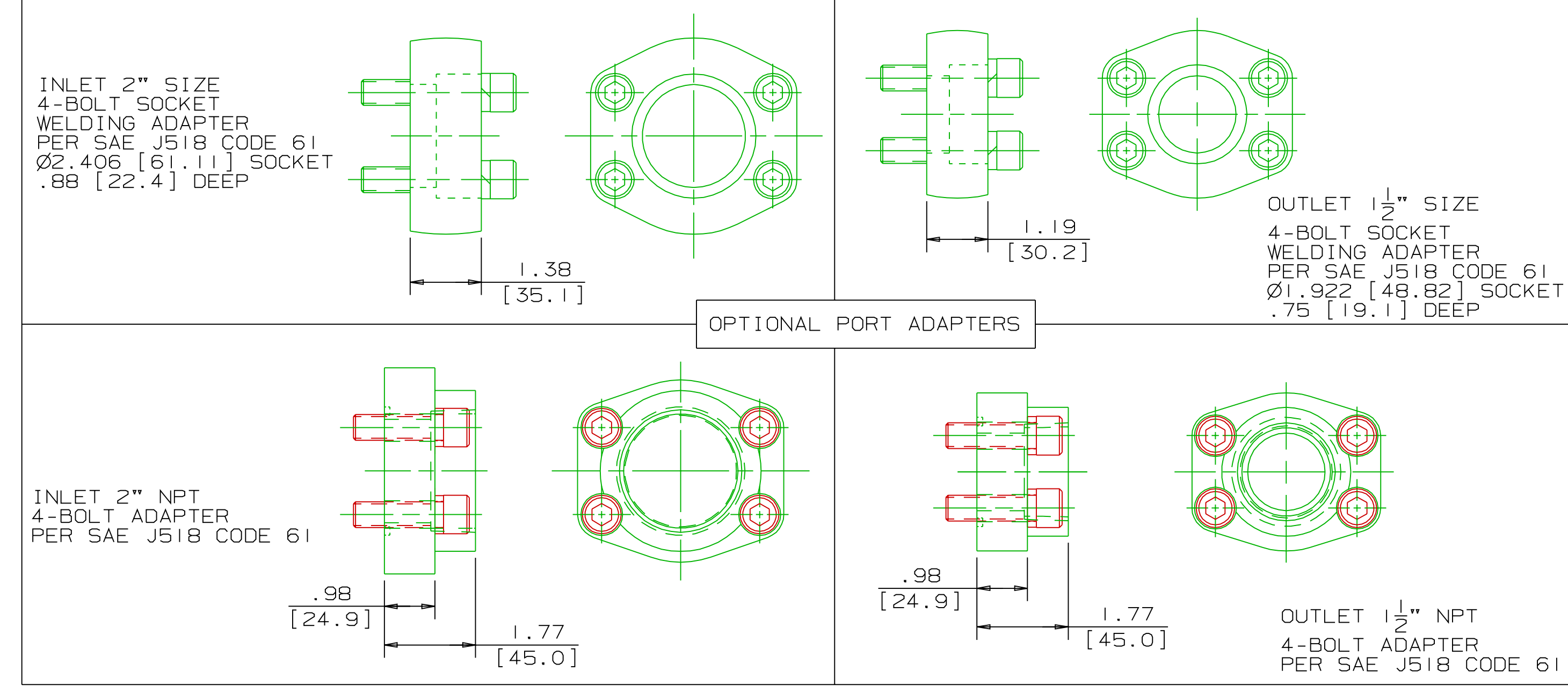
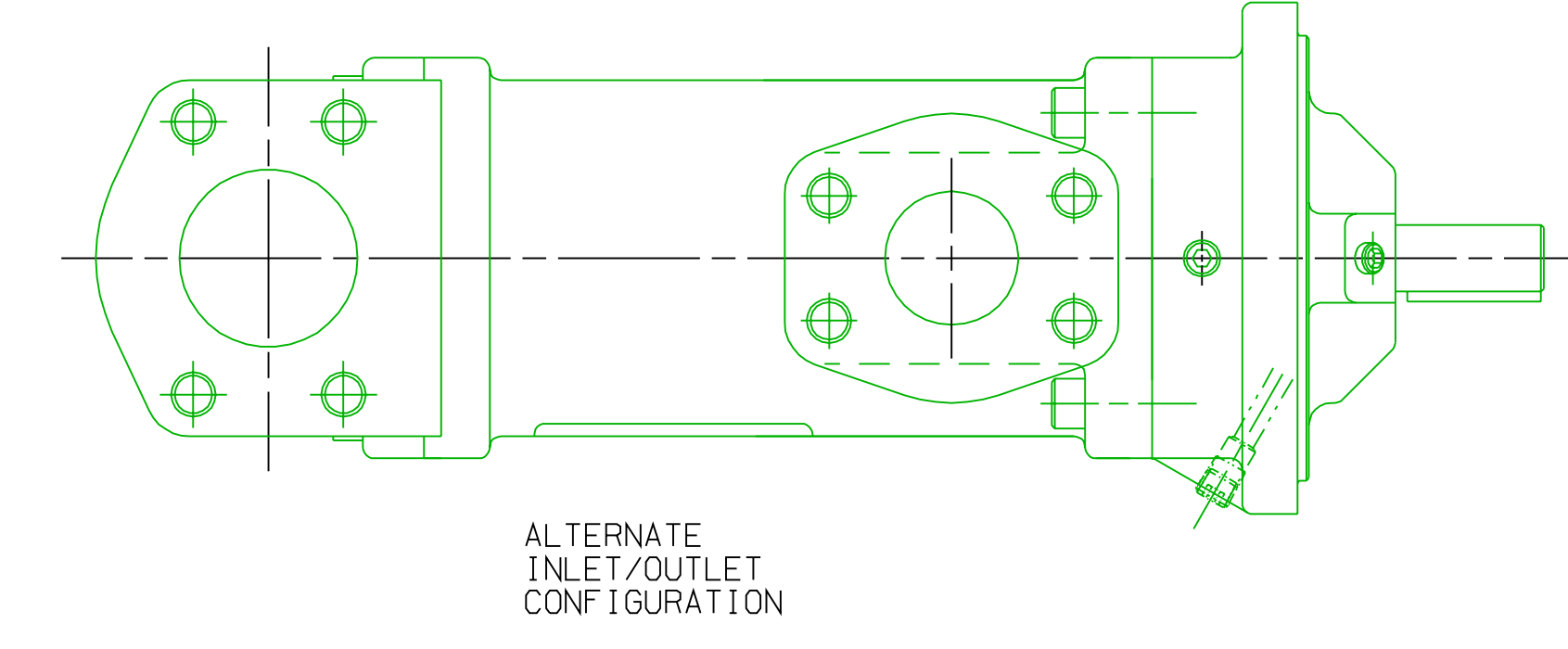


REVISION HISTORY				DATE	BY	APPROVED
CHG NO	ZONE	REV	DESCRIPTION			
06-0052	C-7	15	ADDED 3X 1/8-27 NPT DRAIN HOLES	02-01-06	BMR	BMR

INLET 2" SIZE 4-BOLT PORT OPTION DIMENSIONS PER SAE J518 CODE 61

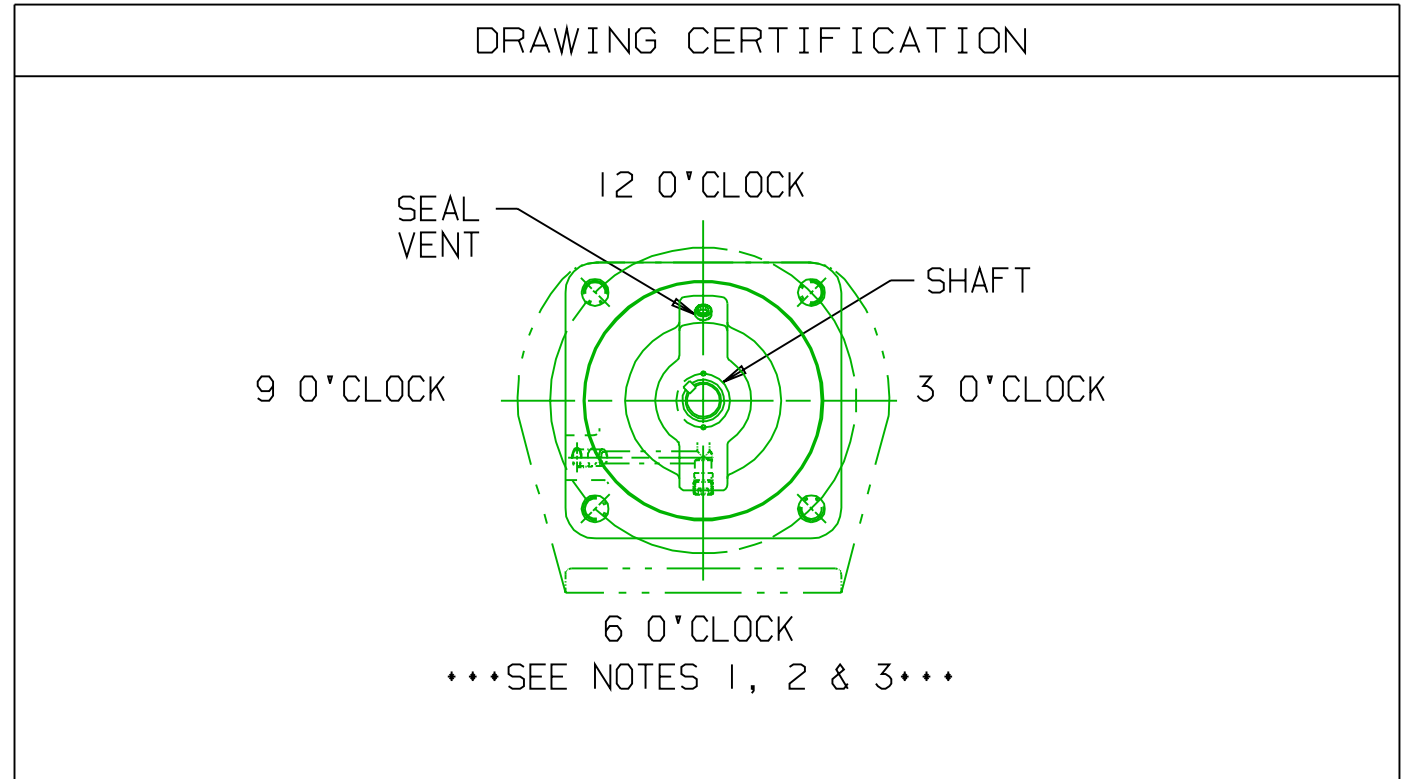
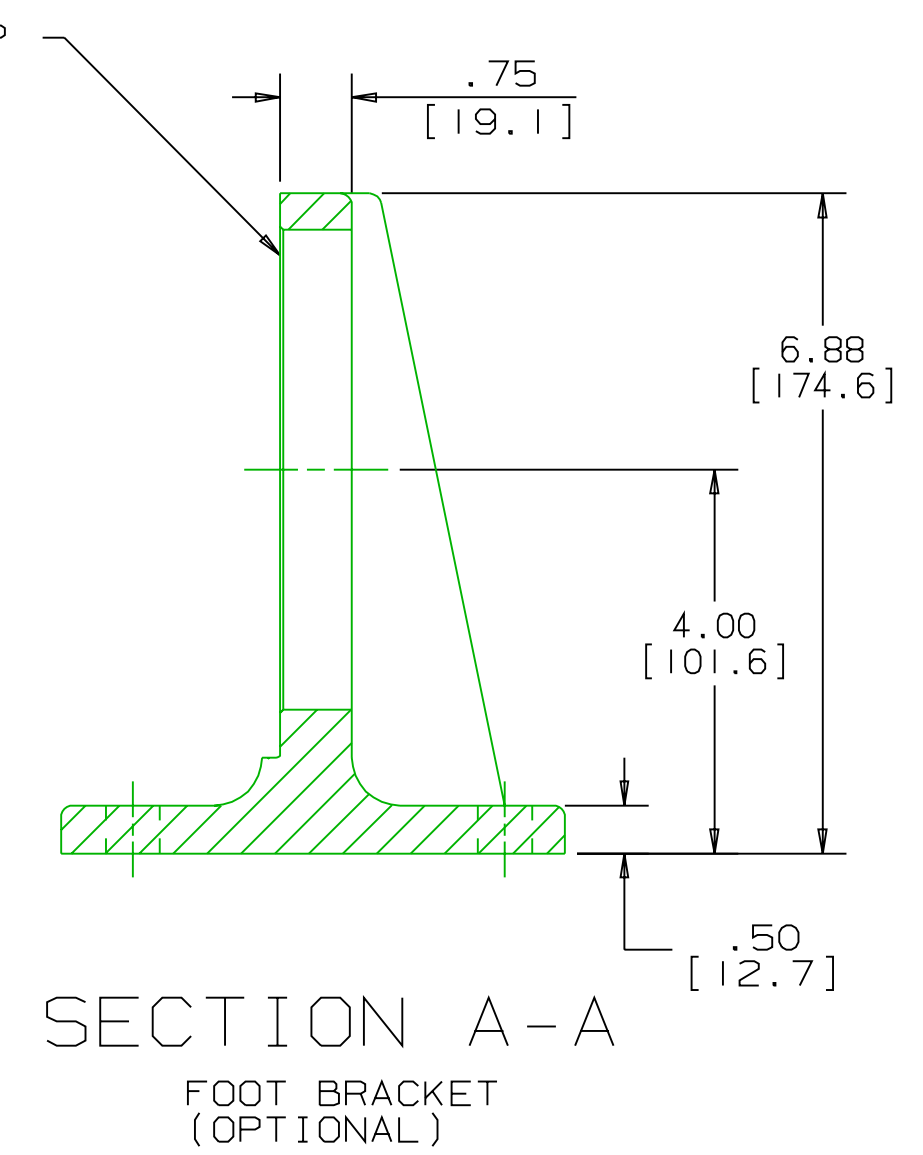
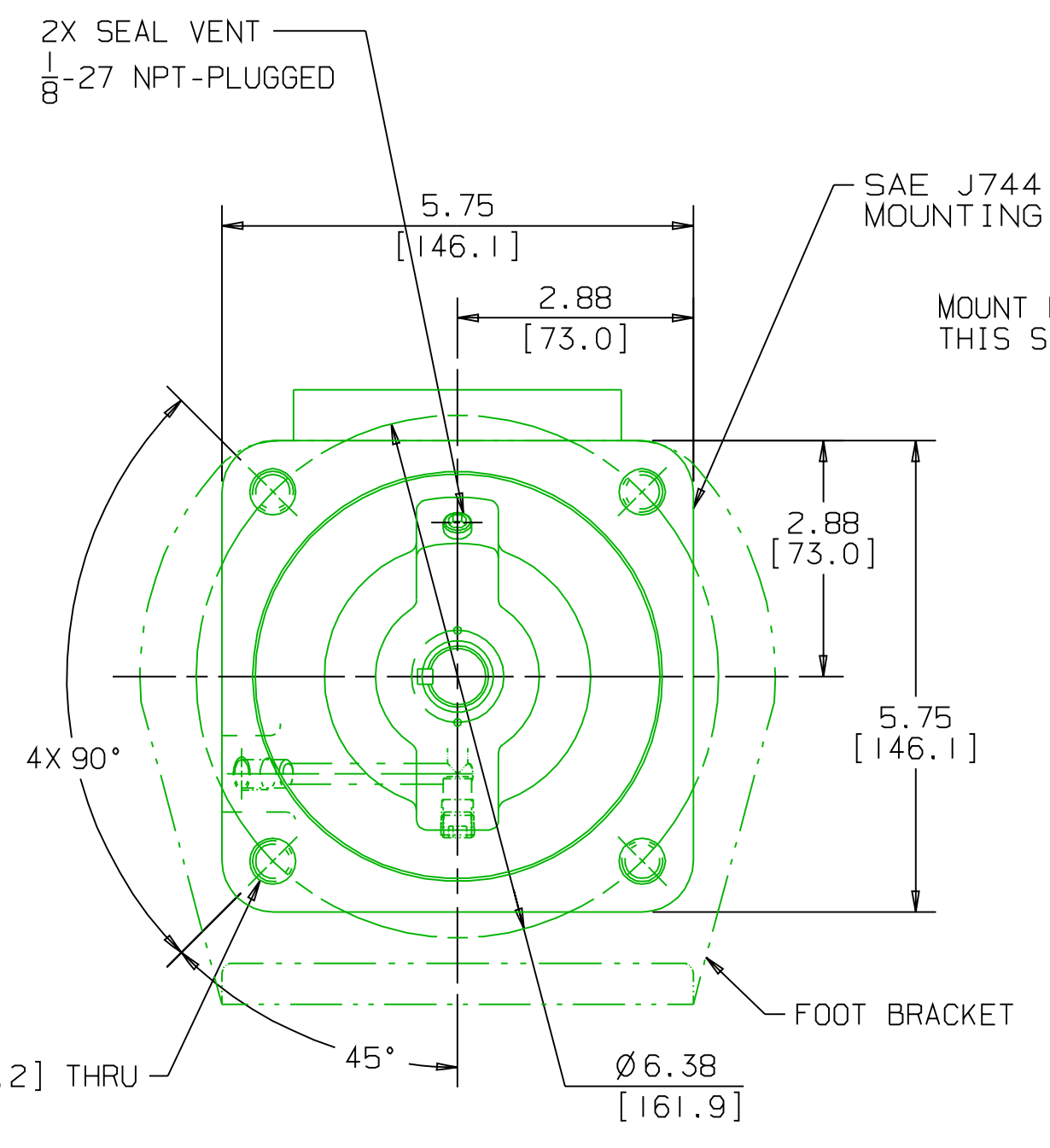
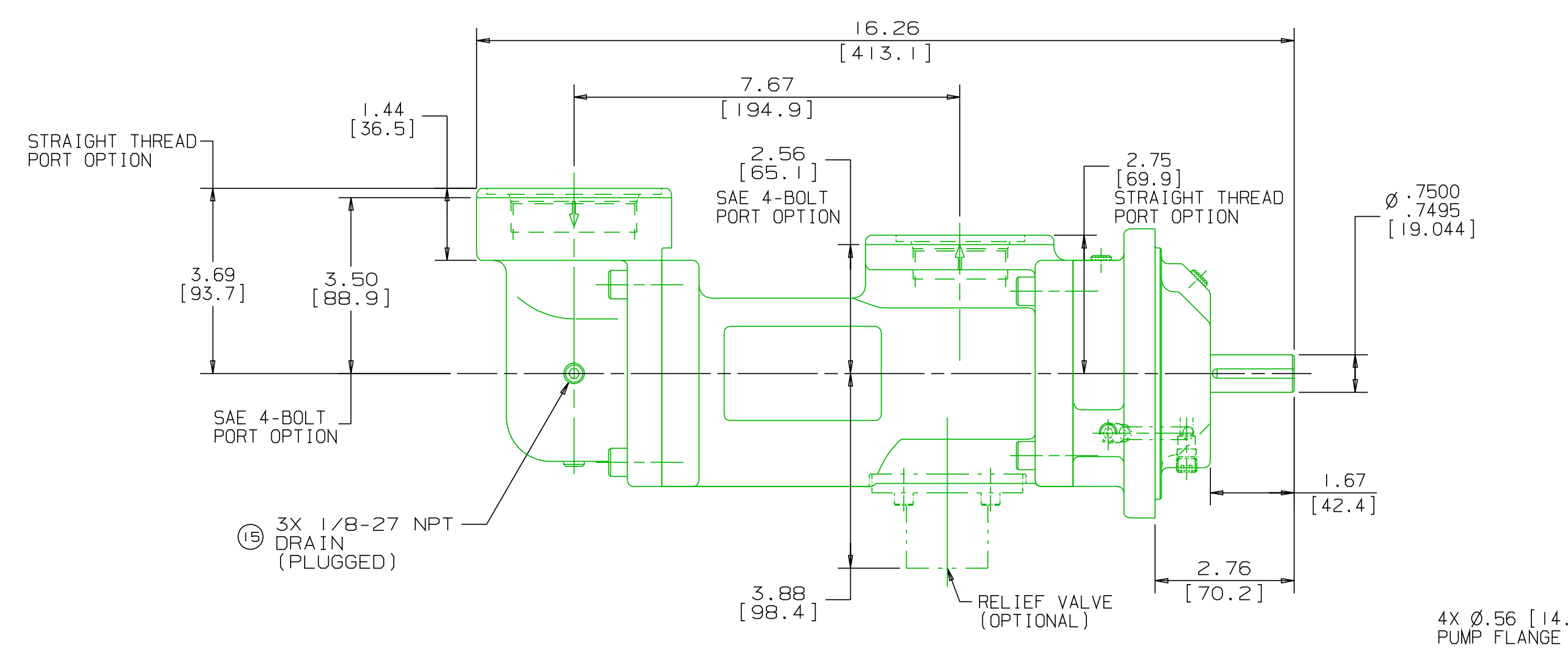
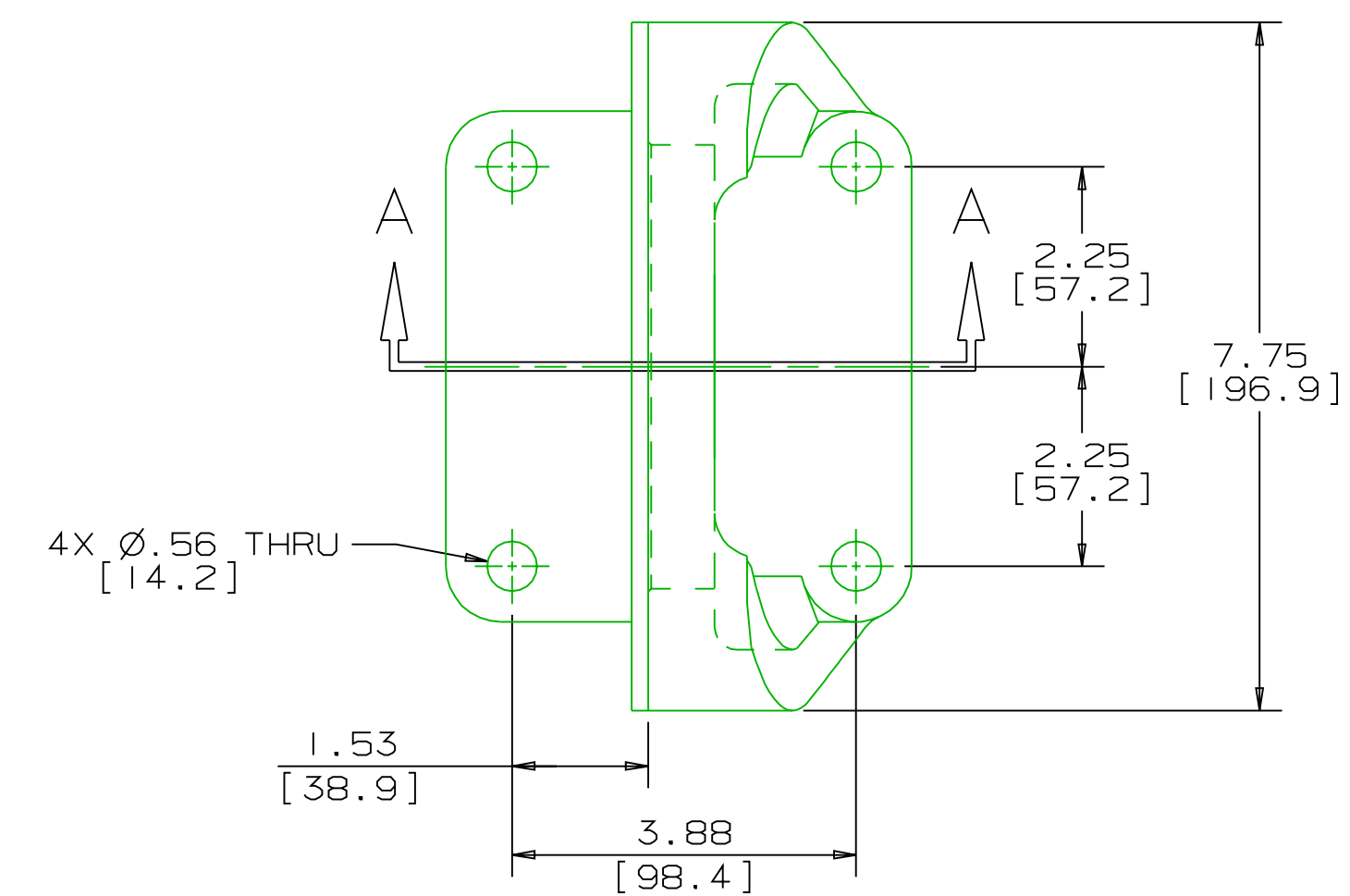
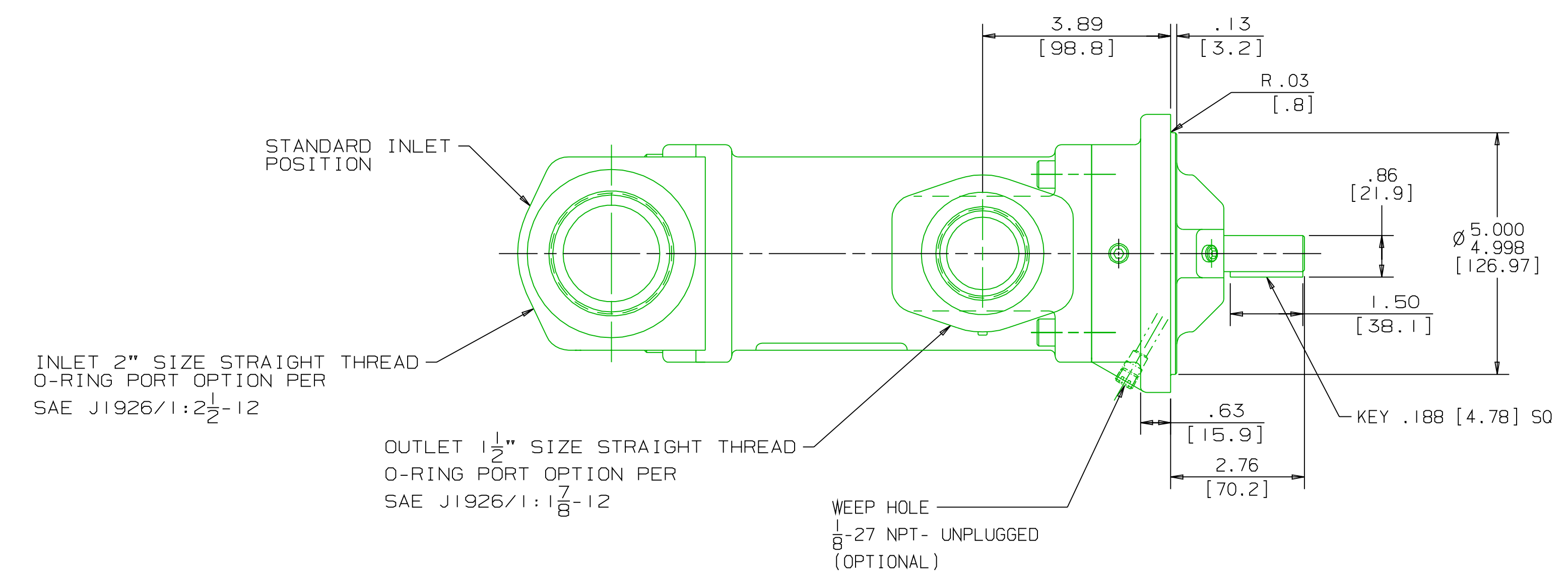
OUTLET 1/2" SIZE 4-BOLT PORT OPTION DIMENSIONS PER SAE J518 CODE 61



INLET:
 FX=150 LBF [667 N] MX=250 LB FT [339 N·m]
 FY=150 LBF [667 N] MY=250 LB FT [339 N·m]
 FZ=150 LBF [667 N] MZ=250 LB FT [339 N·m]

OUTLET:
 FX=113 LBF [500 N] MX=188 LB FT [254 N·m]
 FY=113 LBF [500 N] MY=188 LB FT [254 N·m]
 FZ=113 LBF [500 N] MZ=188 LB FT [254 N·m]

FORCE AND MOMENT VALUES ARE RELATIVE TO CENTER OF INLET AND OUTLET PORT FACES.



CUSTOMER NAME -----

CUSTOMER PO NUMBER -----

CUSTOMER PART NUMBER -----

BOM NUMBER -----

PUMP TYPE -----

SHAFT ROTATION -----

INLET PORT ORIENTATION -----

OUTLET PORT ORIENTATION -----

FOOT BRKT. ORIENTATION -----

INLET PORT OPTION -----

INLET ADAPTER OPTION -----

OUTLET PORT OPTION -----

OUTLET ADAPTER OPTION -----

RELIEF VALVE SET PRESSURE, IF APPLICABLE -----

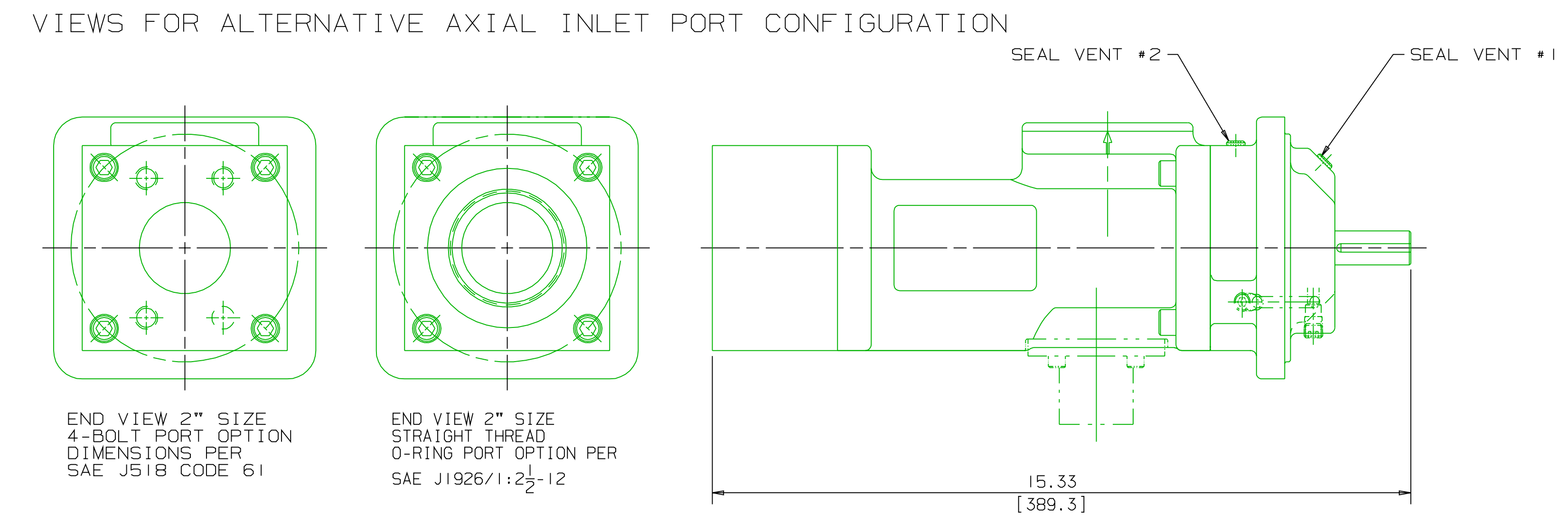
OTHER INFORMATION -----

CERTIFIED BY -----

CERTIFIED DATE -----

IMO ORDER NUMBER -----

DATA REVISION NUMBER -----



- NOTES:
- TO MAXIMIZE SEAL LIFE, SEAL VENT MUST BE ORIENTED UPWARD (12 O'CLOCK) WHEN PUMP IS INSTALLED HORIZONTALLY. VENT ORIENTATION IS NOT CRITICAL WHEN PUMP IS INSTALLED WITH SHAFT VERTICALLY UPWARD.
 - PORT, FOOT, AND SEAL VENT ORIENTATIONS ARE SUPPLIED AS SHOWN ON DRAWING UNLESS OTHERWISE SPECIFIED.
 - ALTERNATE PORT AND FOOT ORIENTATIONS ARE PROVIDED IF SPECIFIED ON ORDER. AVAILABLE ORIENTATIONS ARE 3, 6, 9, AND 12 O'CLOCK.
 - BOLT PATTERN FOR SAE 4-BOLT AXIAL INLET IS ALWAYS ORIENTED AS SHOWN WITH RESPECT TO OUTLET PORT.
 - APPROXIMATE PUMP WEIGHT (WITHOUT ADAPTERS):
 FLANGE MOUNT PUMP--- 44.3 LBS. [20.1 kgs]
 FOOT MOUNT PUMP----- 56.5 LBS. [25.7 kgs]
 - UNLESS OTHERWISE SPECIFIED, ALL DIMENSIONS ARE IN INCHES. DIMENSIONS IN [] ARE MILLIMETERS.

WEB ADDRESS: WWW.IMO-PUMP.COM		EMAIL: IMO.PUMP@COLFAXCORP.COM	
DRAWN	ERH 1-7-99	DATE	1-7-99
CHECKED	CDG 1-7-99	SCALE	1/2
APPROVED	MJC 1-7-99	WEIGHT	SEE NOTE 5
MATERIAL		METHODS	
UNLESS OTHERWISE SPECIFIED ANSI 1/4-20-1982 1. ALL DIMENSIONS ARE IN INCHES. 2. FRACTIONAL 1/32 ON MACHINED DIMENSIONS. 3. MACHINED SURFACES 250 V FINISH. 4. BREAK SHARP CORNERS .015 ± .005. 5. CHAMFERS LESS THAN .050 ± .015. 6. ANGLES 10°±. CHAMFERS 15°±.01. 7. HOLES AND COUNTERBORES TO IE3 3.17.4. 8. SCREW THDS. TO ANST B.1. (CL. 1, 2 OR 5). 9. TAPERED PIPE THDS. TO ANST B.20.1.			
TITLE		CAGE CODE	
OUTLINE STANDARD (IRON)		59180	
AA3G/		SDD19511	
SCALE		SHEET 1 OF 1	

IRON 3G-143/162