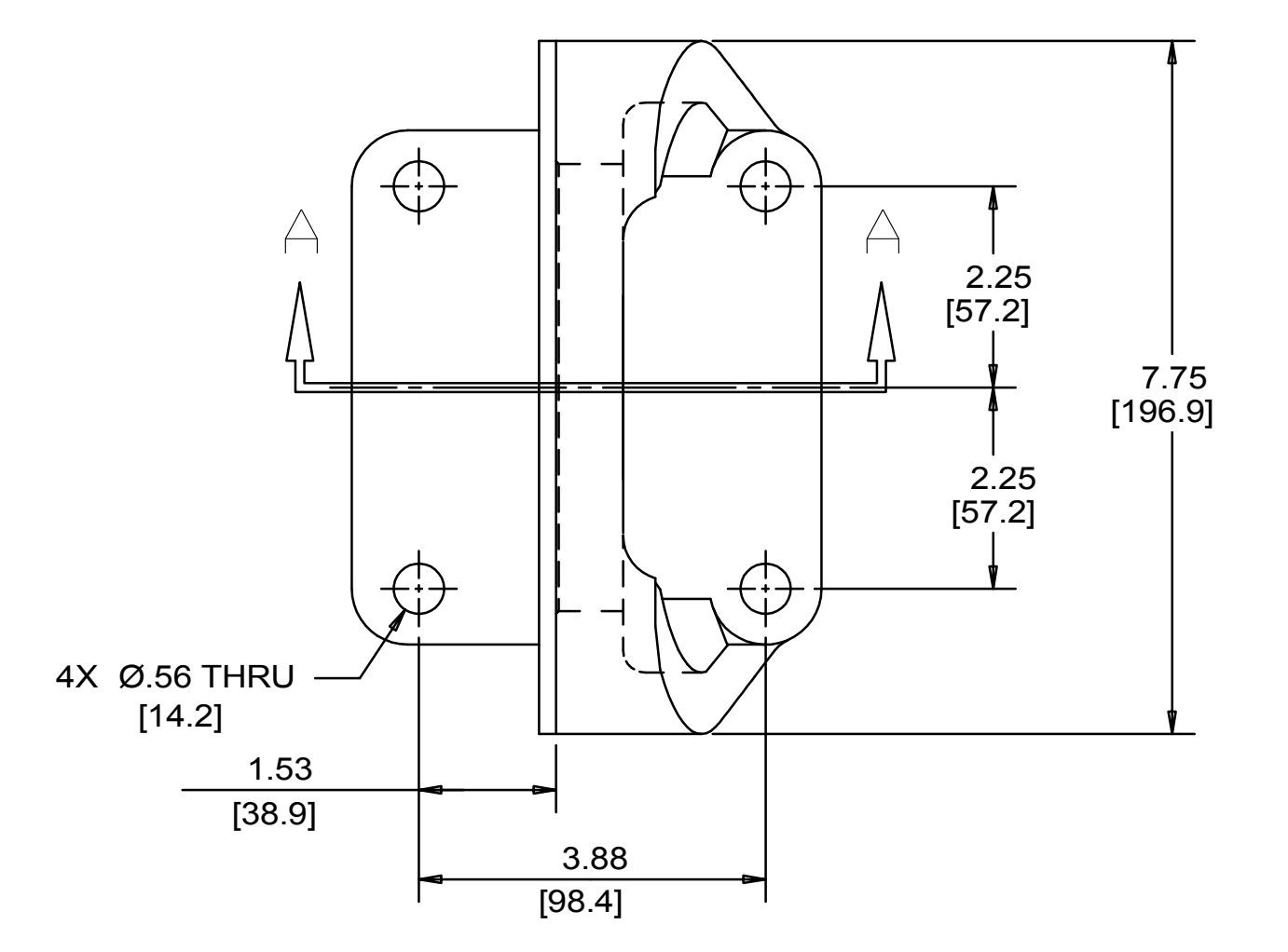
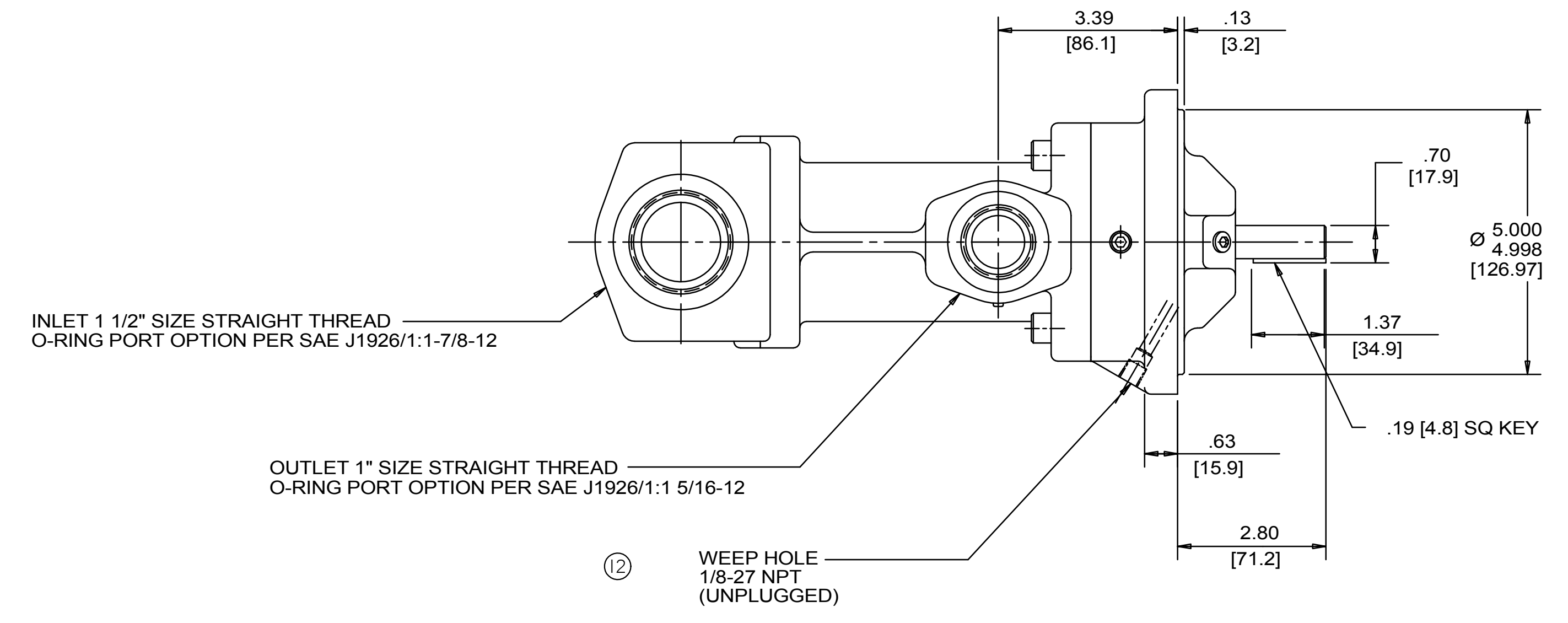
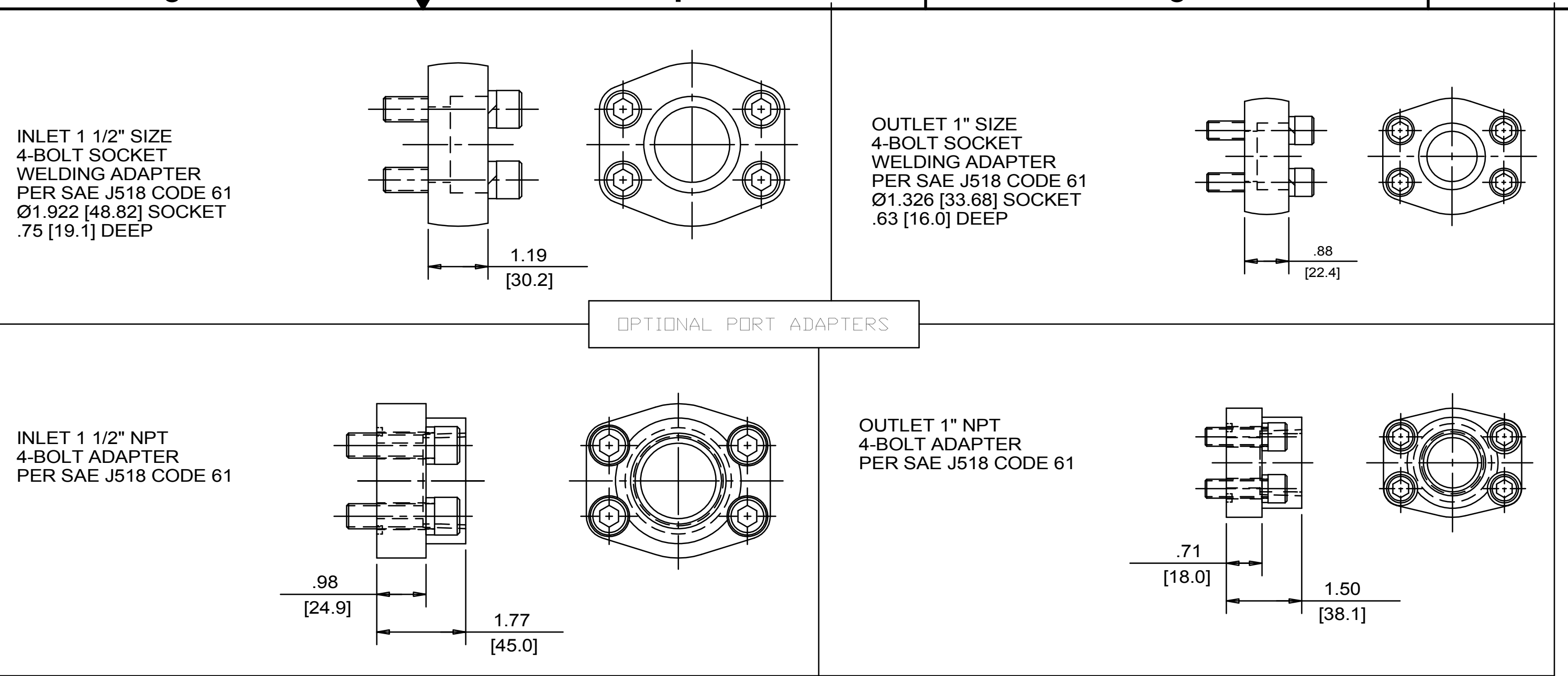
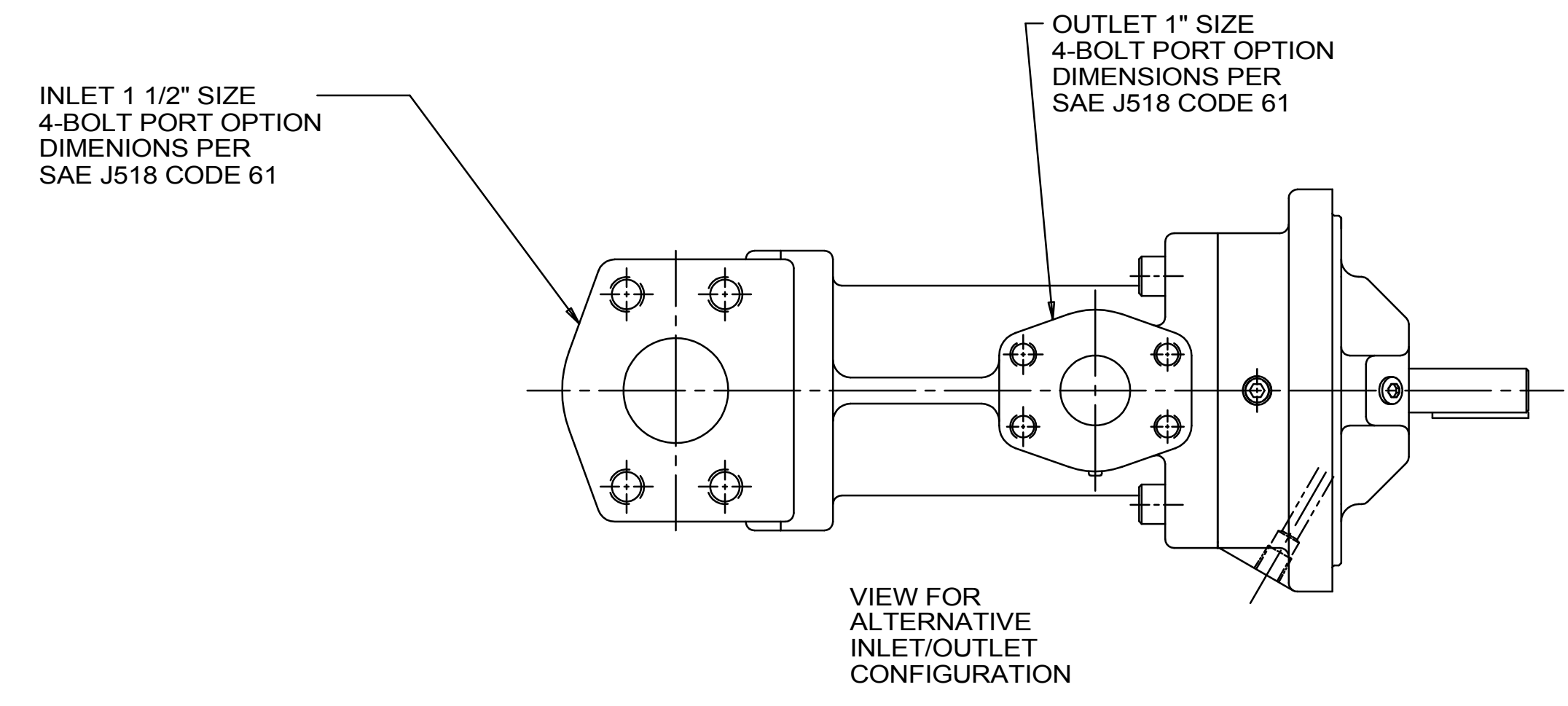


REVISION HISTORY				DATE	BY	APPROVED
CHG NO	ZONE	REV	DESCRIPTION			
22-0000	ALL	14	UPDATED TITLE BLOCK AND FORCES & MOMENTS STAMP	1-26-22	CDG	CDG

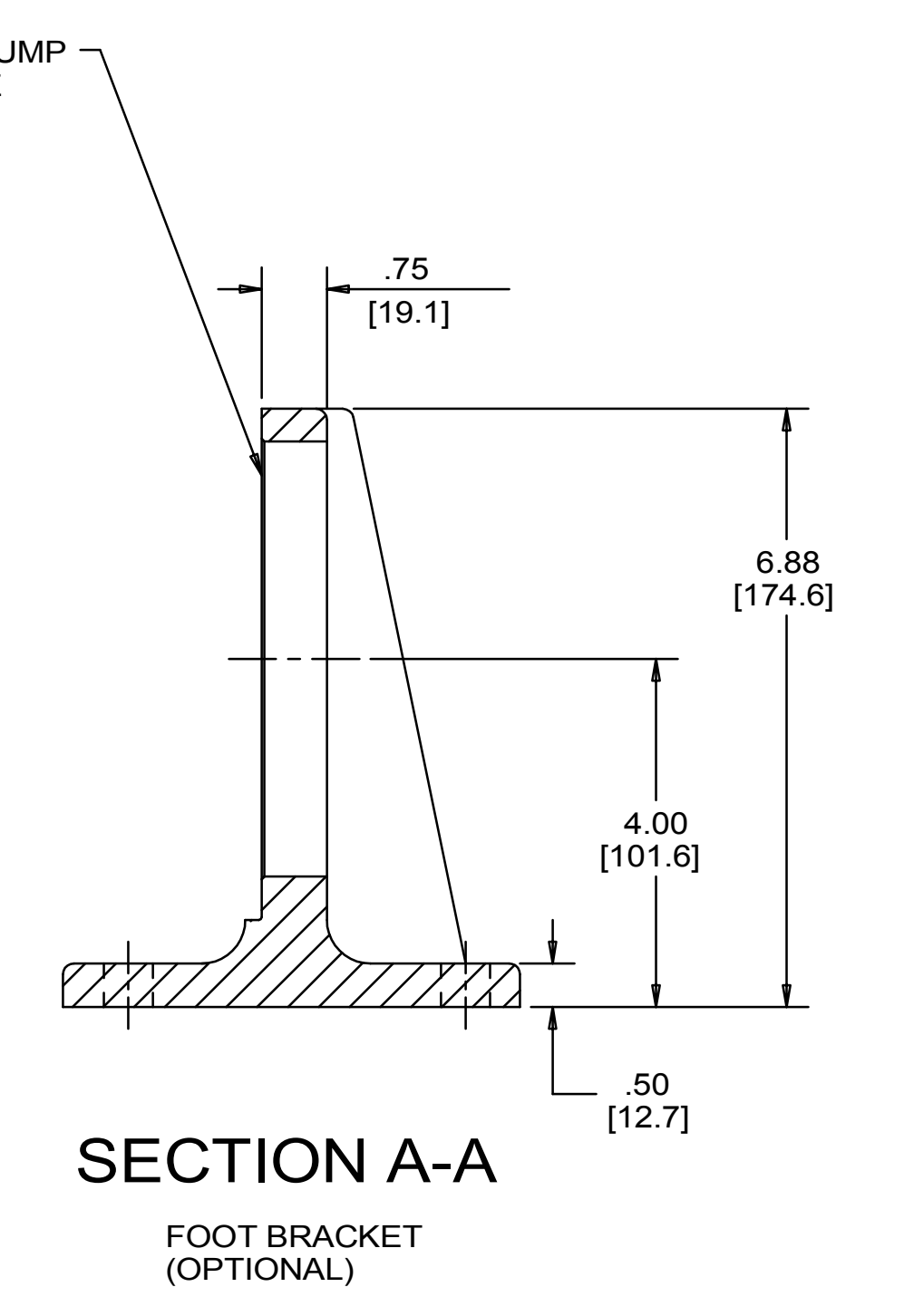
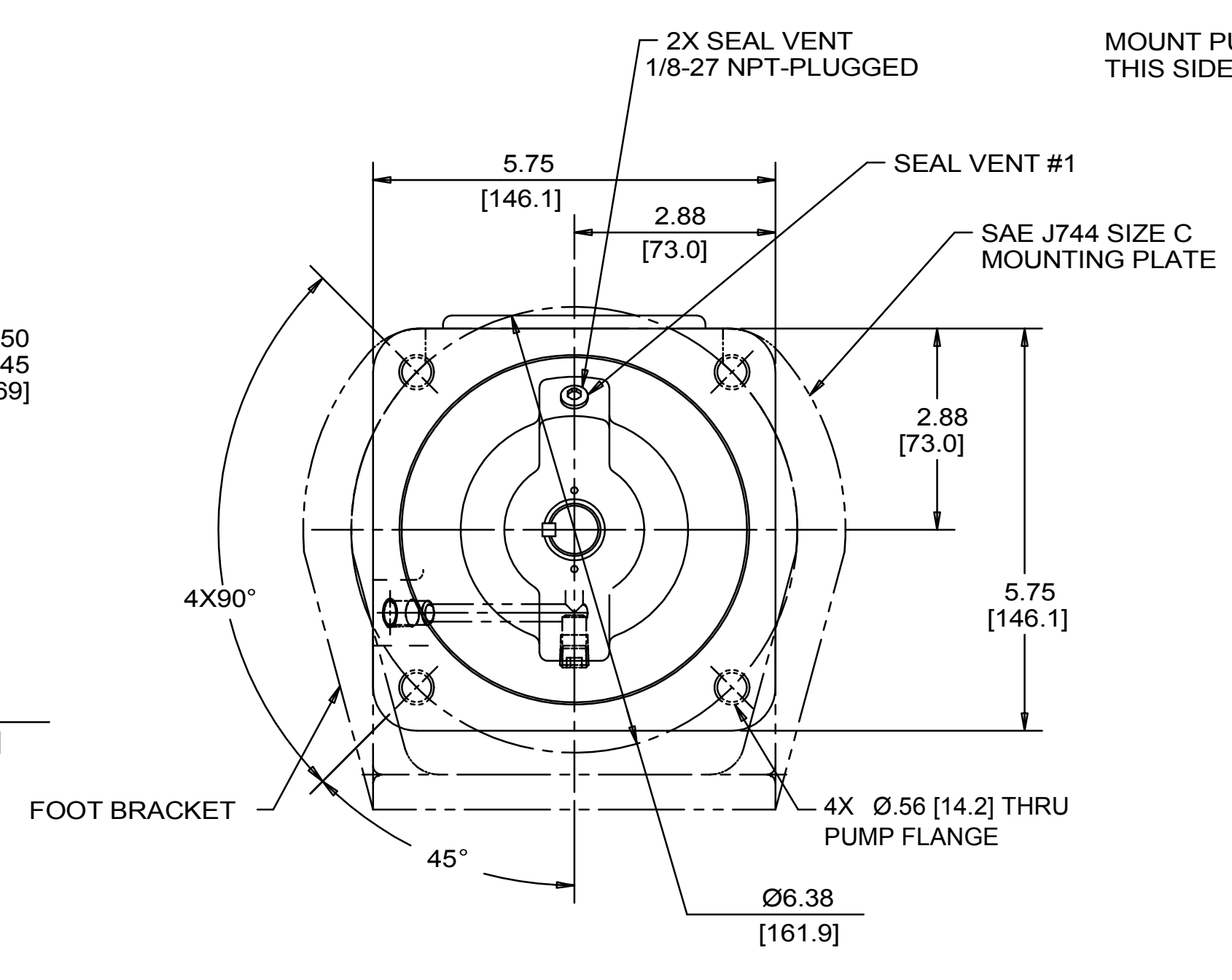
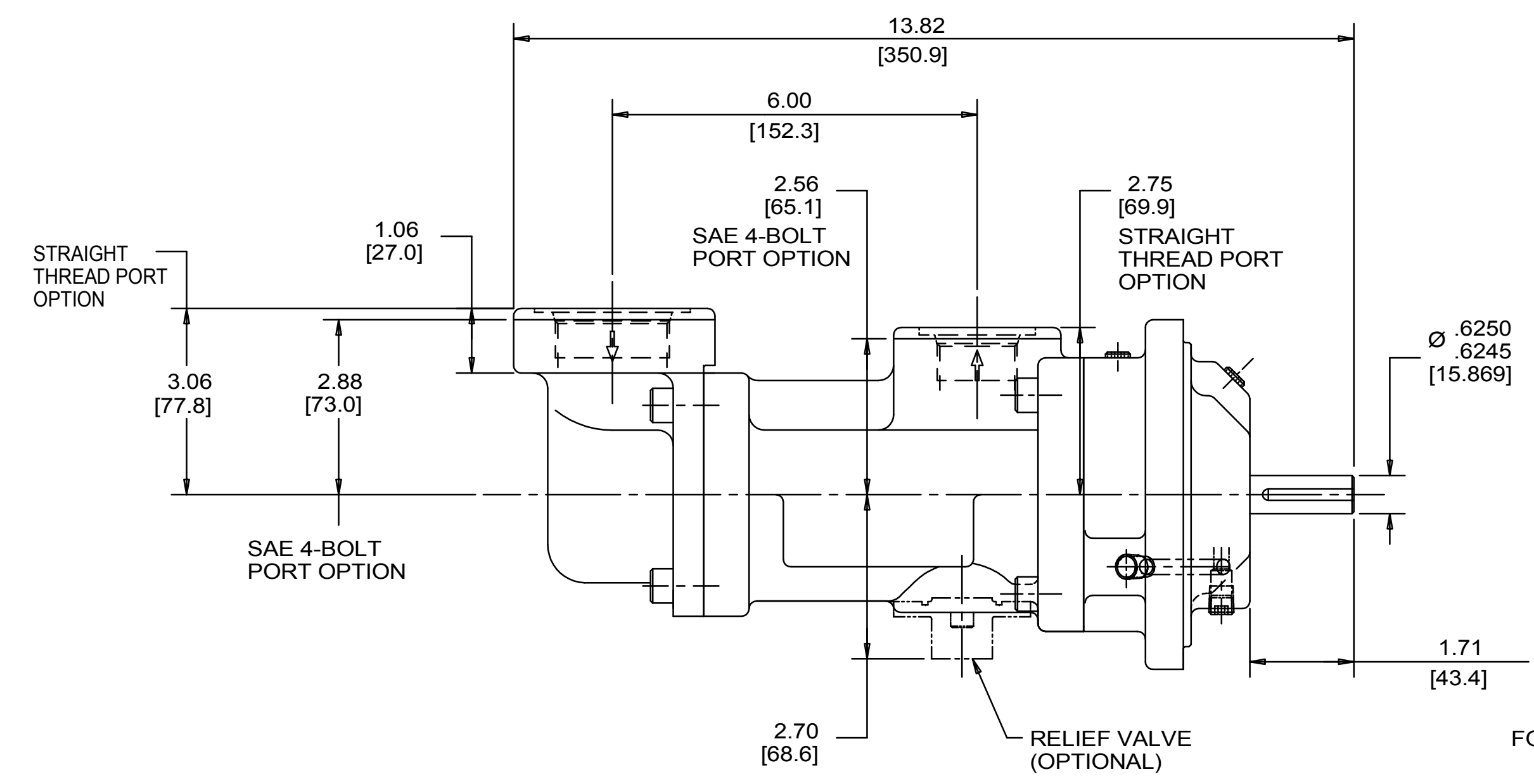


COORDINATE SYSTEM FOR MAXIMUM PUMP FORCES (F) AND MOMENTS (M)

	LBF	N
INLET Fx, Fy, Fz	113	500
OUTLET Fx, Fy, Fz	75	334

	LB FT	Nm
INLET Mx, My, Mz	188	254
OUTLET Mx, My, Mz	125	169

FORCE AND MOMENT VALUES ARE RELATIVE TO CENTER OF INLET AND OUTLET PORT FACES.

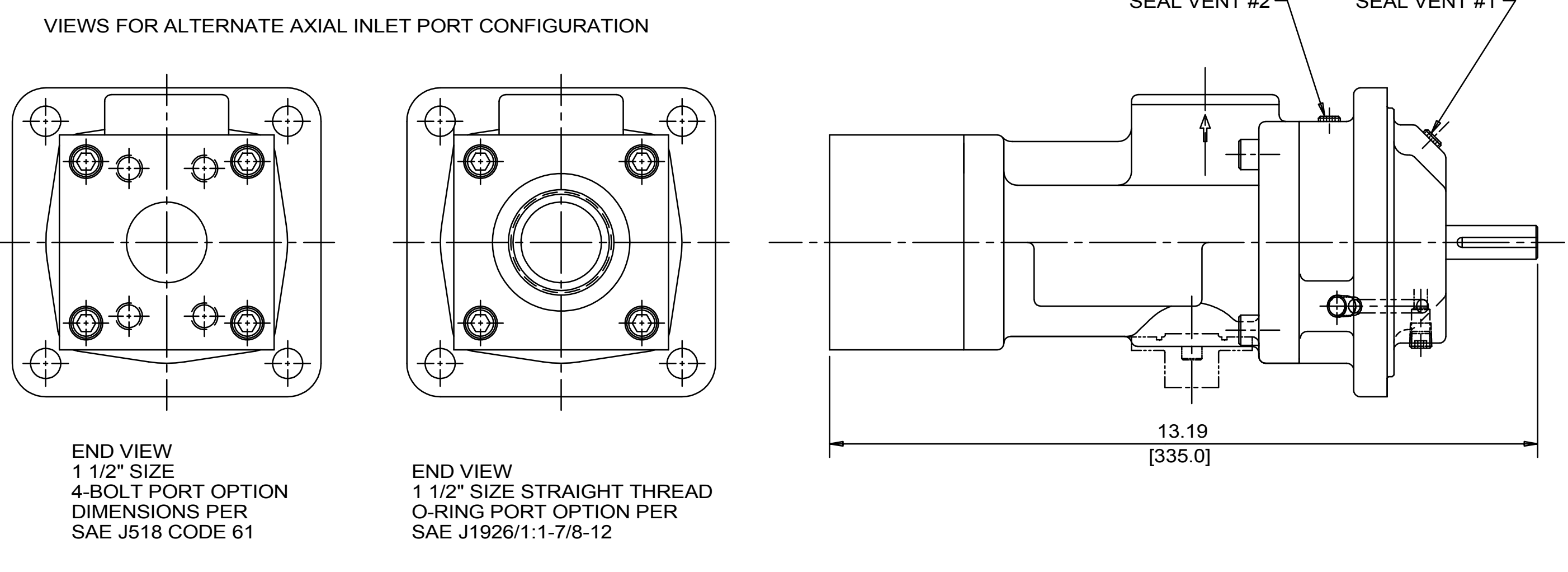


DRAWING CERTIFICATION

CUSTOMER NAME -----
 CUSTOMER PO NUMBER -----
 CUSTOMER PART NUMBER -----
 BOM NUMBER -----
 PUMP TYPE -----
 SHAFT ROTATION -----
 INLET PORT ORIENTATION ----
 OUTLET PORT ORIENTATION ----
 FOOT BRKT. ORIENTATION ----
 INLET PORT OPTION -----
 INLET ADAPTER OPTION -----
 OUTLET PORT OPTION -----
 OUTLET ADAPTER OPTION -----
 RELIEF VALVE SET PRESSURE, IF APPLICABLE -----

OTHER INFORMATION -----

CERTIFIED BY -----
 CERTIFIED DATE -----
 IMO ORDER NUMBER -----
 DATA REVISION NUMBER -----



- NOTES:
1. TO MAXIMIZE SEAL LIFE, SEAL VENT MUST BE ORIENTED UPWARD (12 O'CLOCK) WHEN PUMP IS INSTALLED HORIZONTALLY. VENT ORIENTATION IS NOT CRITICAL WHEN PUMP IS INSTALLED WITH SHAFT VERTICALLY UPWARD.
 2. PORT, FOOT, AND SEAL VENT ORIENTATIONS ARE SUPPLIED AS SHOWN ON DRAWING UNLESS OTHERWISE SPECIFIED.
 3. ALTERNATE PORT AND FOOT ORIENTATIONS ARE PROVIDED IF SPECIFIED ON ORDER. AVAILABLE ORIENTATIONS ARE 3, 6, 9, AND 12 O'CLOCK.
 4. BOLT PATTERN FOR SAE 4-BOLT AXIAL INLET IS ALWAYS ORIENTED AS SHOWN WITH RESPECT TO OUTLET PORT.
 5. APPROXIMATE PUMP WEIGHT (WITHOUT ADAPTERS):
 FLANGE MOUNT PUMP--- 33.9 LBS. [15.4 kgs]
 FOOT MOUNT PUMP--- 46.1 LBS. [21.0 kgs]
 6. UNLESS OTHERWISE SPECIFIED ALL DIMENSIONS ARE IN INCHES. DIMENSIONS IN [] ARE MILLIMETERS.

DRAWN	ERH	11-19-98		
CHECKED	CDG	01-07-99		
APPR	MJC	01-07-99	TITLE OUTLINE STANDARD (IRON) 3G/-----118--	
PROCESS	METHODS		FIRST ORDER E1101A	SAGE CODE F
UNLESS OTHERWISE SPECIFIED ASME Y14.5M-1994			PART NO. 59180	DWG NO. SDD19580
DIMENSIONS: SECTION STRAINER AND DISCHARGE RELIEF VALVE MUST BE PROVIDED ALIGNMENT UNITS ARE ACCURATELY ALIGNED AT THE FACTORY. ALIGNMENT SHOULD BE CHECKED BEFORE STARTING TO INSTALL THAT IT IS STILL WITHIN TOL- ERANCES. FLUSH SECTION PRIOR TO CONNECTING PUMP. PRIME AND VENT PUMP. READ INSTRUCTION MANUAL FOR DETAILS BEFORE STARTING.			SCALE 1/2	WEIGHT SEE NOTE 5