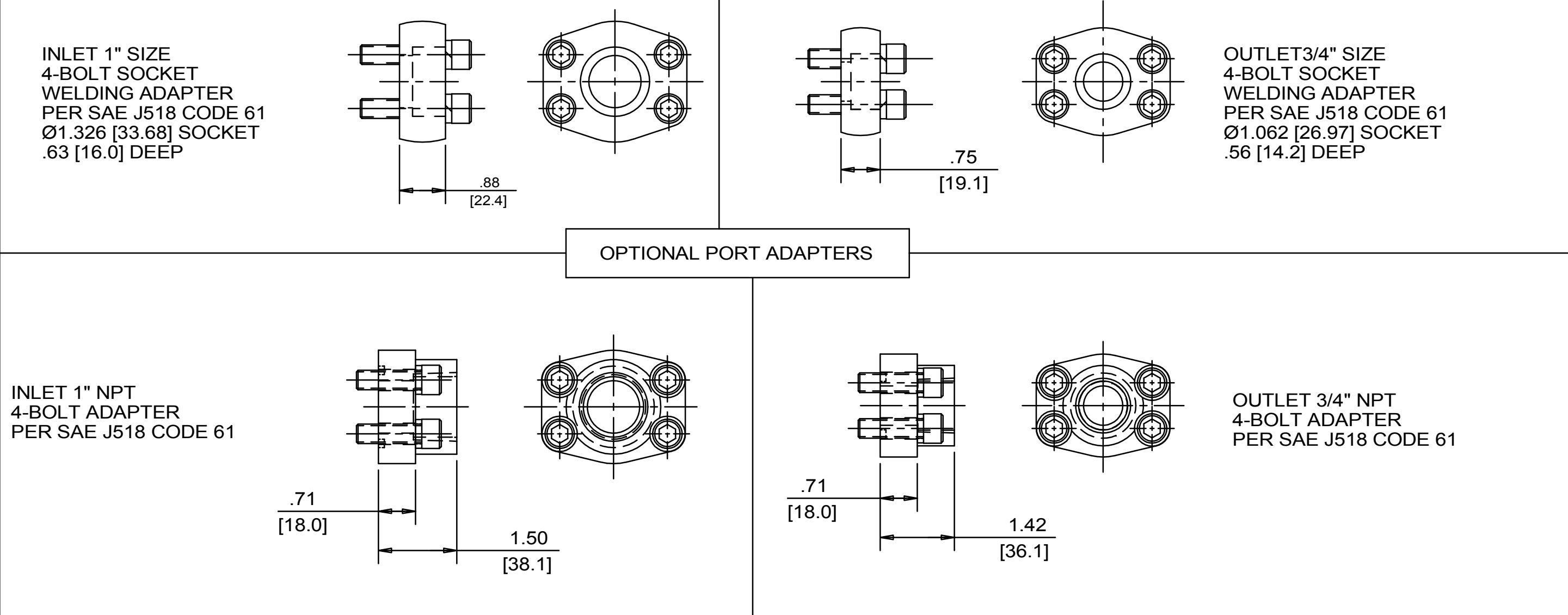
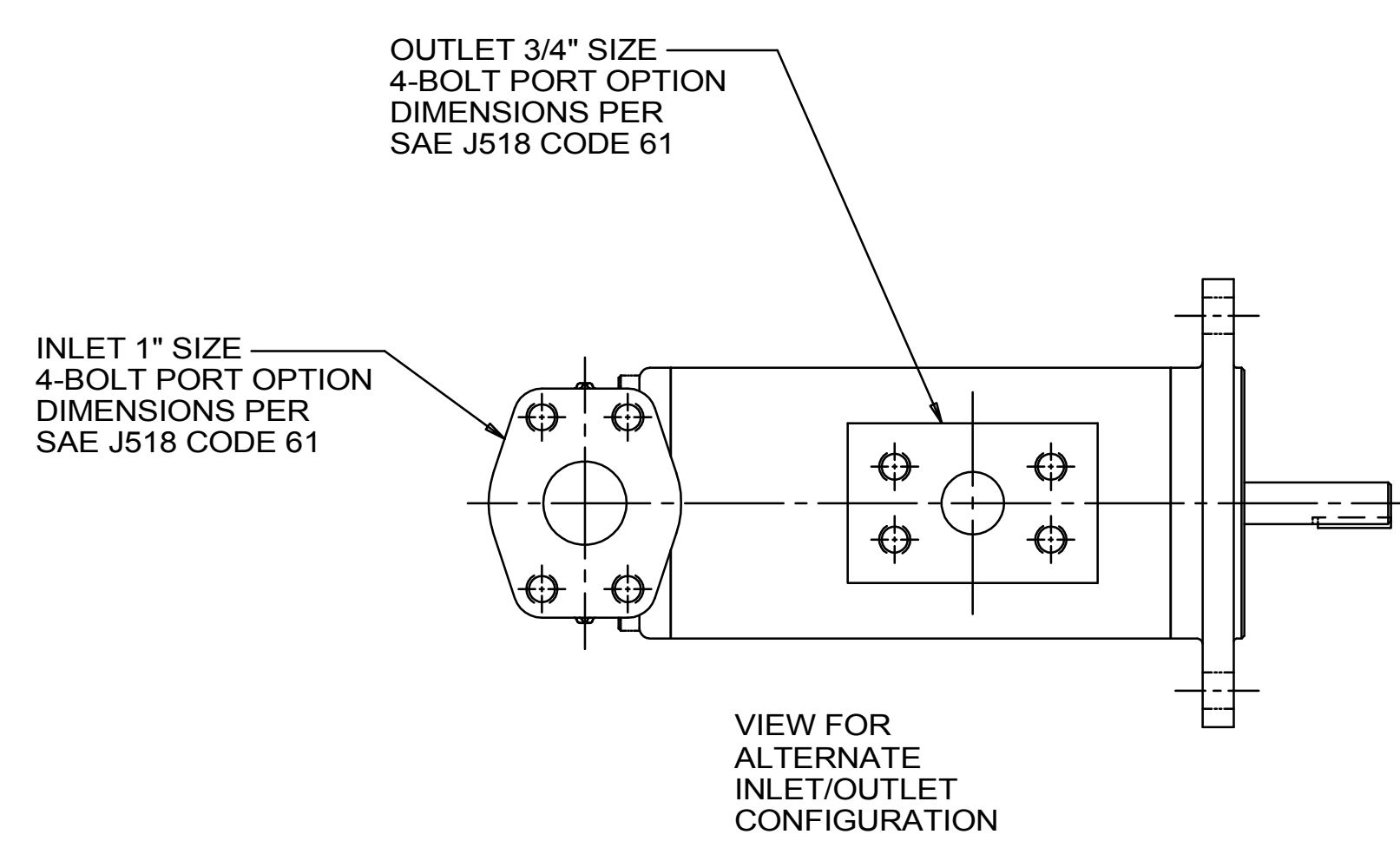


REVISION HISTORY					
CHG NO	ZONE	REV	DESCRIPTION	DATE	BY / APPROVED
11-0187	AI	5	CHANGED TITLE, WAS AA3G	5-17-11	ERH / ERH
22-0000	ALL	6	UPDATE TITLE BLOCK, FORCES & MOMENTS STAMP	1-26-22	CDG / CDG

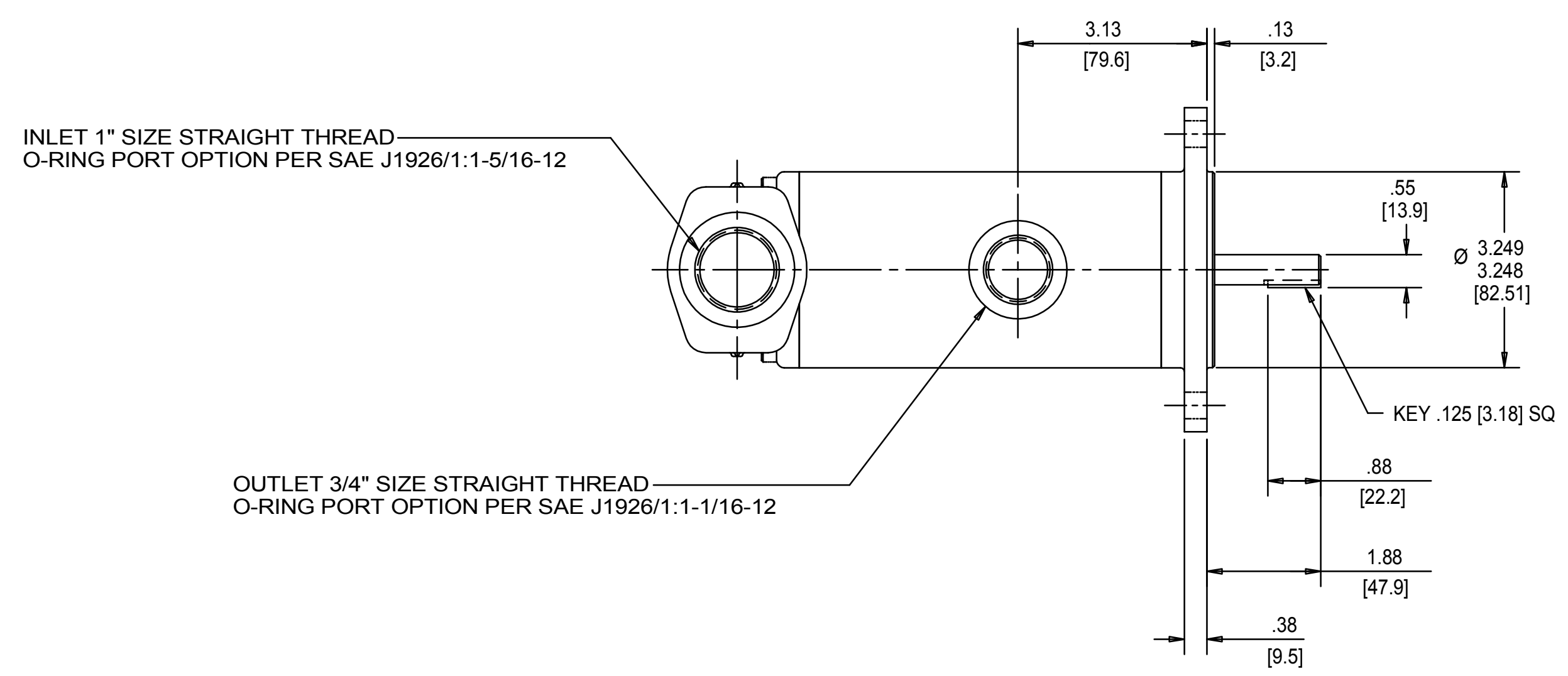


COORDINATE SYSTEM FOR MAXIMUM PUMP FORCES (F) AND MOMENTS (M)

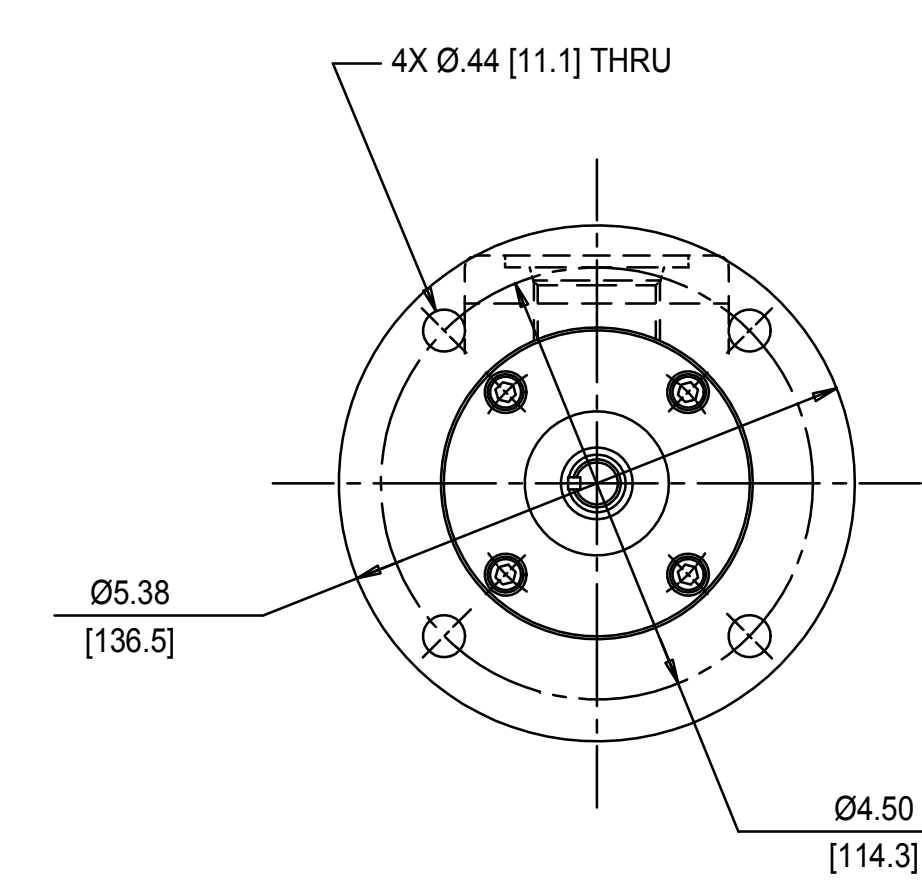
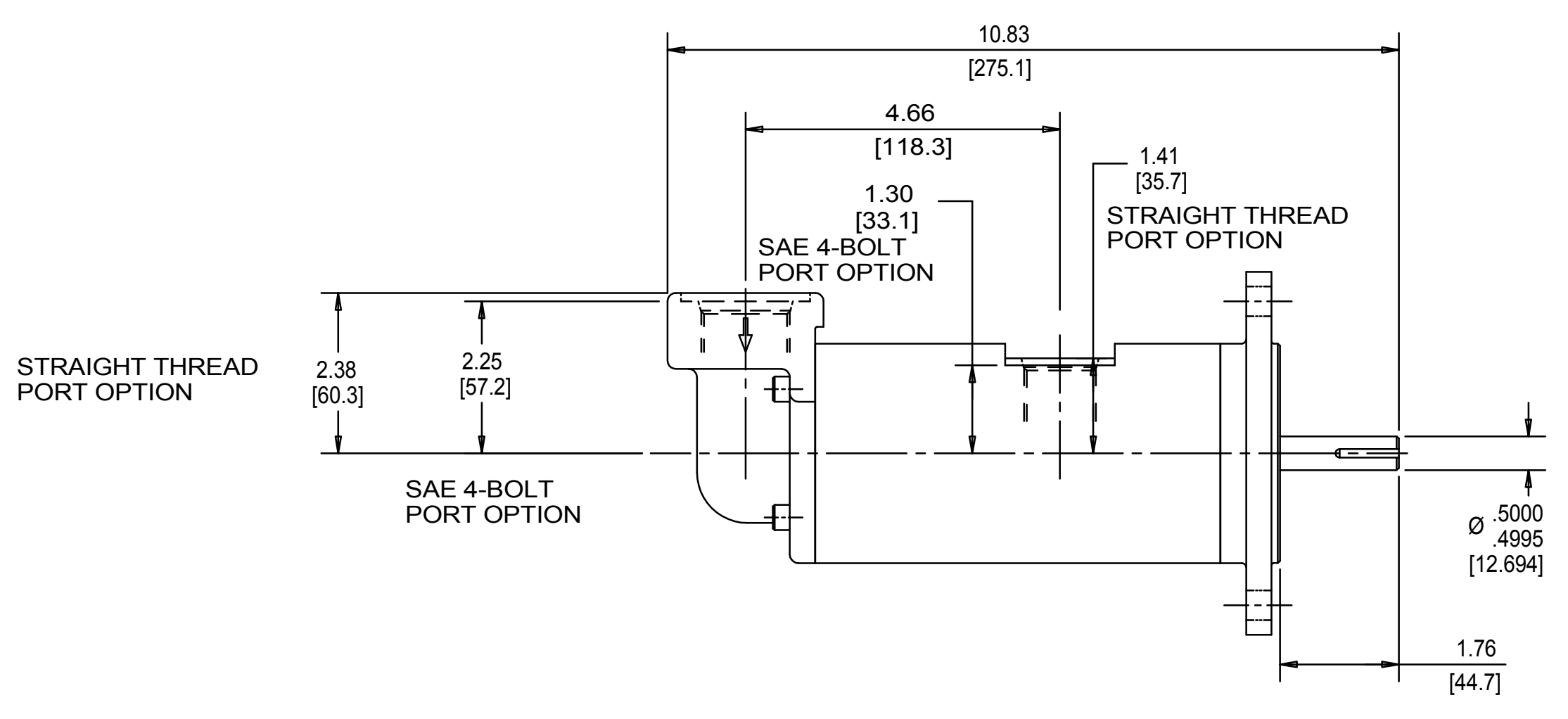
	LBF	N
INLET Fx, Fy, Fz	37.5	169
OUTLET Fx, Fy, Fz	28.1	125

	LB FT	Nm
INLET Mx, My, Mz	62.5	84.7
OUTLET Mx, My, Mz	46.9	63.6

FORCE AND MOMENT VALUES ARE RELATIVE TO CENTER OF INLET AND OUTLET PORT FACES.



← ROTATION →



DRAWING CERTIFICATION

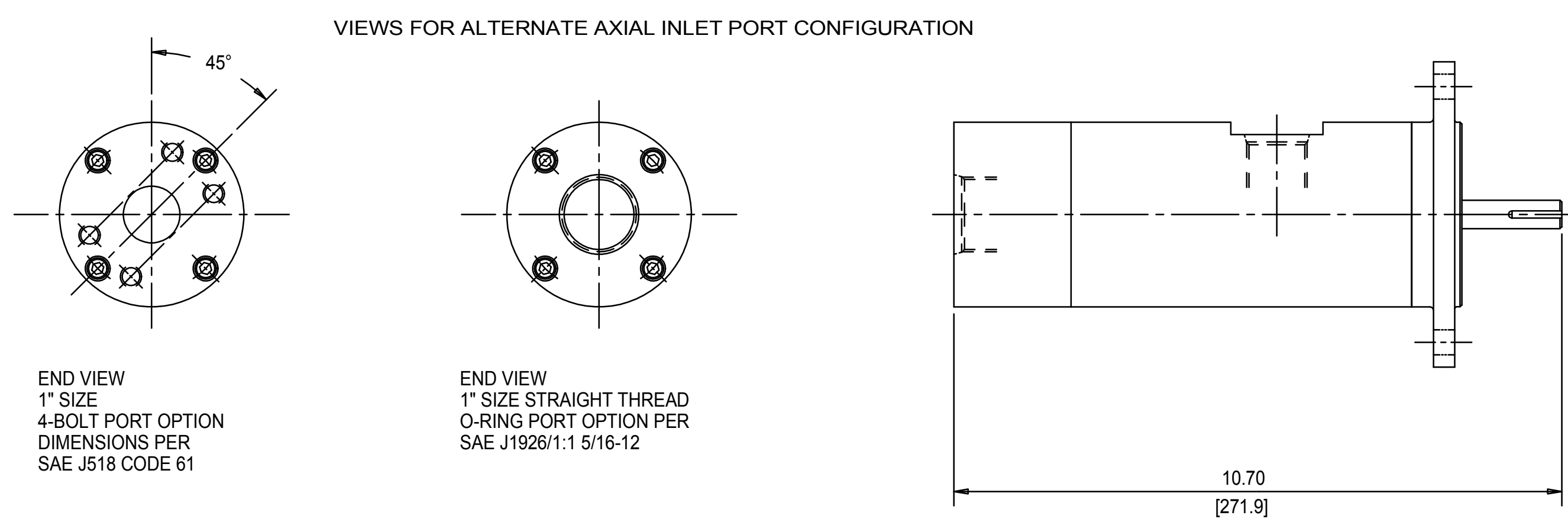
12 O'CLOCK
9 O'CLOCK
6 O'CLOCK
3 O'CLOCK

SEE NOTES 1, 2 & 3

CUSTOMER NAME _____
 CUSTOMER PO NUMBER _____
 CUSTOMER PART NUMBER _____
 BOM NUMBER _____
 PUMP TYPE _____
 SHAFT ROTATION _____
 INLET PORT ORIENTATION _____
 INLET PORT OPTION _____
 INLET ADAPTER OPTION _____
 OUTLET PORT OPTION _____
 OUTLET ADAPTER OPTION _____

OTHER INFORMATION _____

CERTIFIED BY _____
 CERTIFIED DATE _____
 IMO ORDER NUMBER _____
 DATA REVISION NUMBER _____



- NOTES:
- PORT ORIENTATIONS SUPPLIED AS SHOWN UNLESS OTHERWISE SPECIFIED.
 - ALTERNATE RADIAL INLET PORT ORIENTATIONS PROVIDED IF SPECIFIED ON ORDER. AVAILABLE ALTERNATE ORIENTATIONS ARE 3, 6, 9, AND 12 O'CLOCK RELATIVE TO OUTLET PORT.
 - BOLT PATTERN FOR SAE 4-BOLT AXIAL INLET IS ALWAYS ORIENTED AS SHOWN WITH RESPECT TO OUTLET PORT.
 - APPROXIMATE PUMP WEIGHT (WITHOUT ADAPTERS): 18.9 LBS. (8.6 kgs)
 - UNLESS OTHERWISE SPECIFIED, ALL DIMENSIONS ARE IN INCHES. DIMENSIONS IN [] ARE MILLIMETERS.

DRAWN	NRS	6-14-99		
CHECKED	NRS	6-14-99		
APPRD	NRS	6-14-99	TITLE OUTLINE STANDARD (IRON) 3G/NN_IA095_	
PROCESS	METHODS		FIRST ORDER E1102A	SAGE CODE F
UNLESS OTHERWISE SPECIFIED ASME Y14.5M-1994			DWG NO SDD19705	SCALE 1/2
ELEMENTS: SELECTION STRAINER AND DISCHARGE RELIEF VALVE MUST BE PROVIDED ALIGNMENT UNITS ARE ACCURATELY ALIGNED AT THE FACTORY. ALIGNMENT SHOULD BE CHECKED BEFORE STARTING TO INSURE THAT IT IS STILL WITHIN COS ID (3) FM RECFITTING FLUSH SUCTION PUMP BEFORE CONNECTING PUMP. PRIME AND VENT PUMP. READ INSTRUCTION MANUAL FOR DETAILS BEFORE STARTING.			WEIGHT SEE NOTE 4	SHEET 1 OF 1