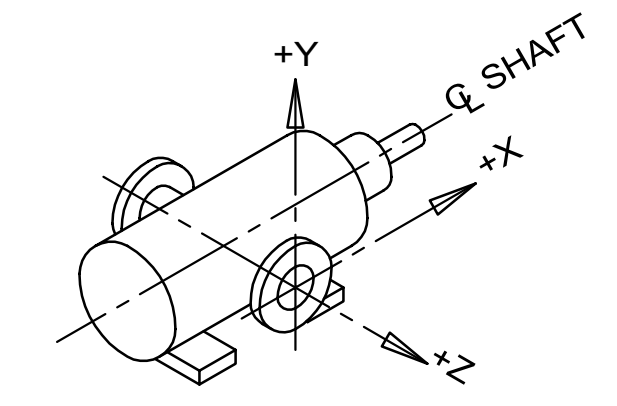
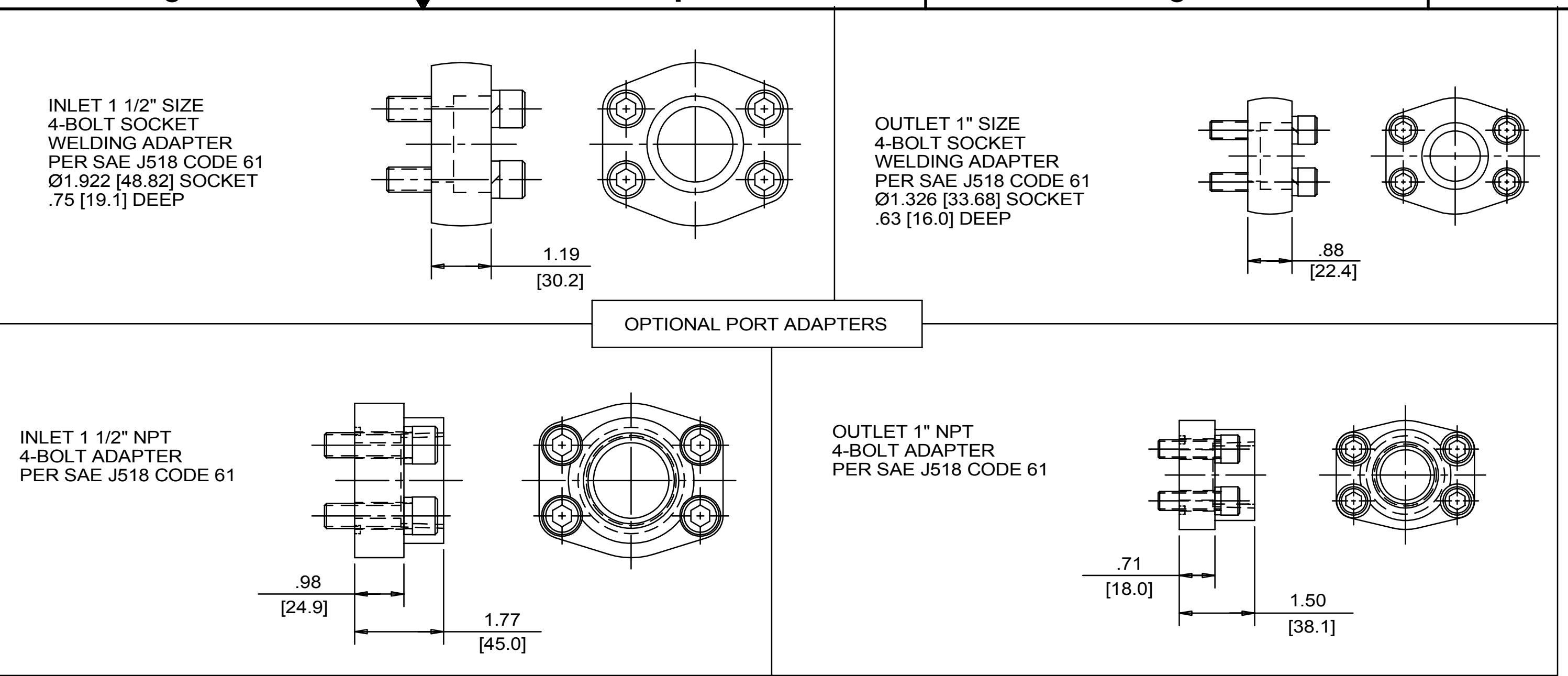
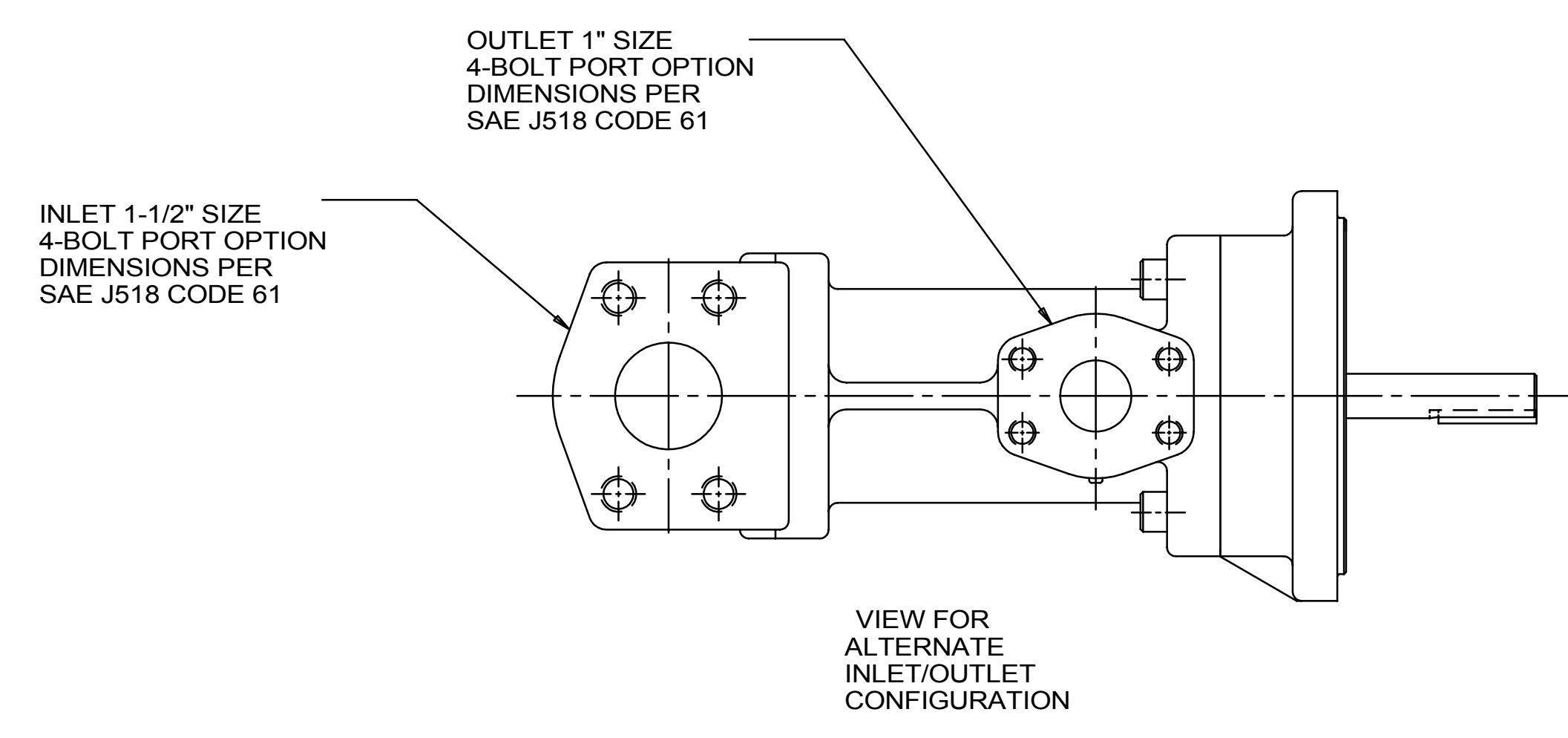


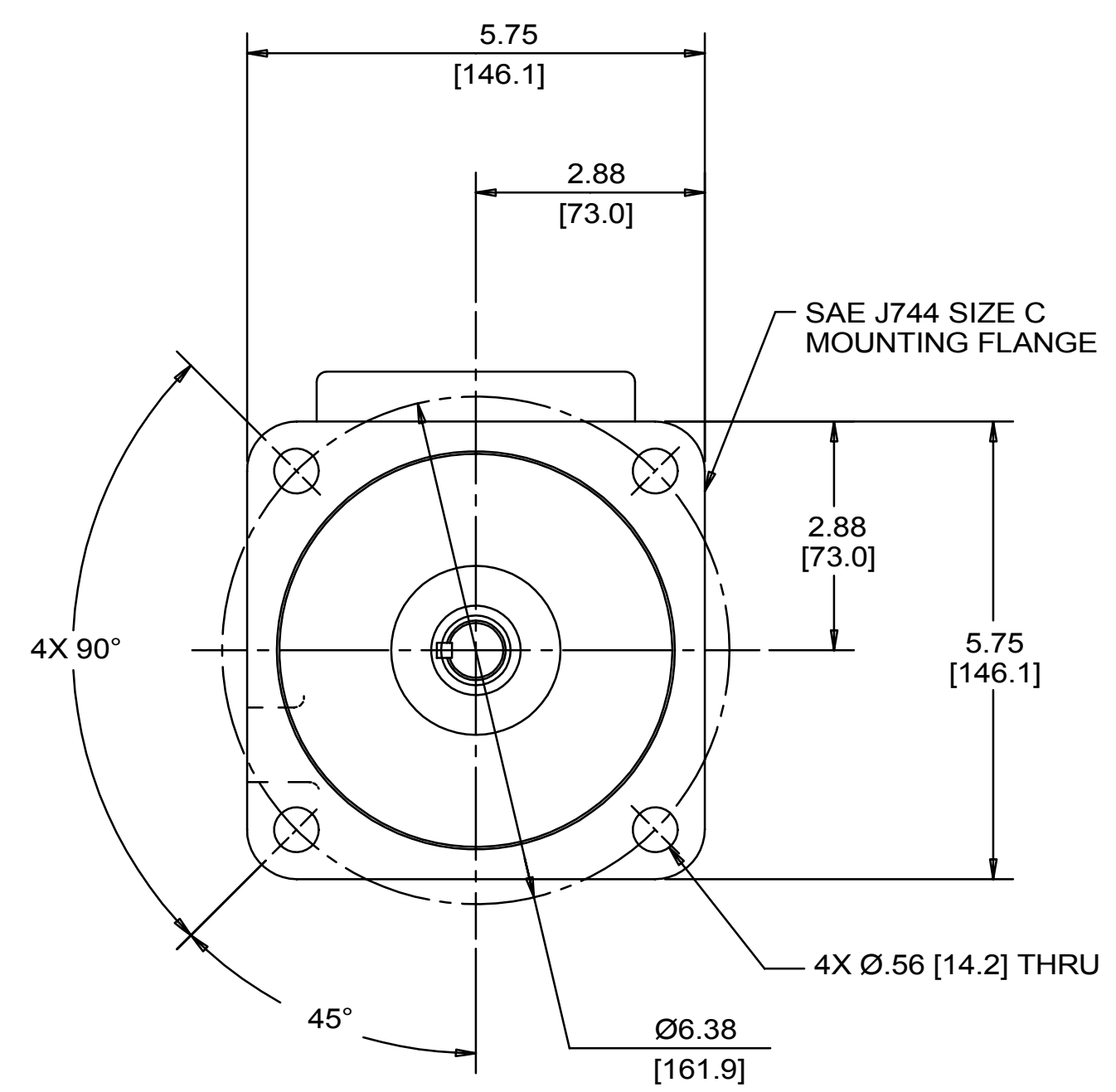
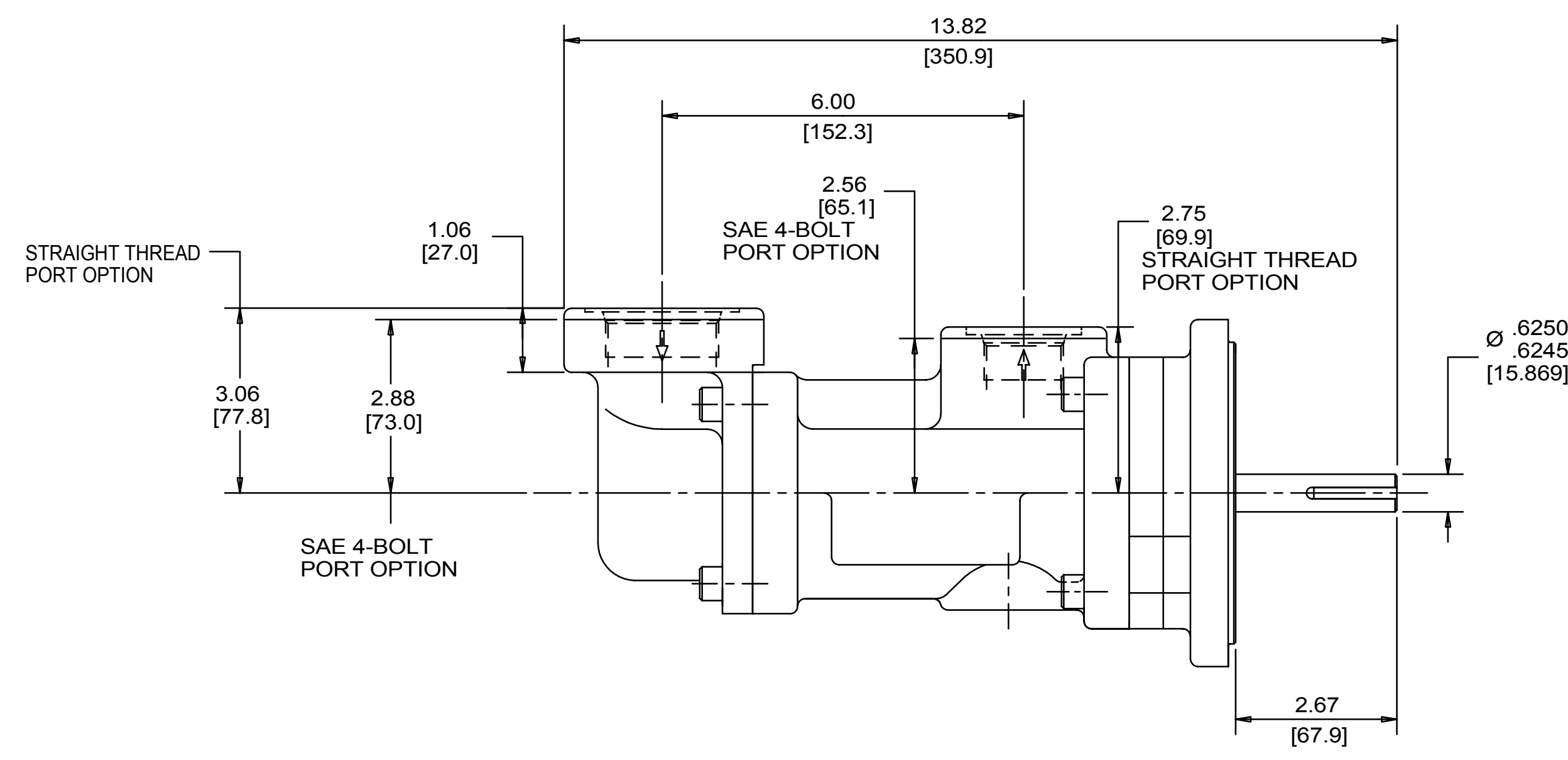
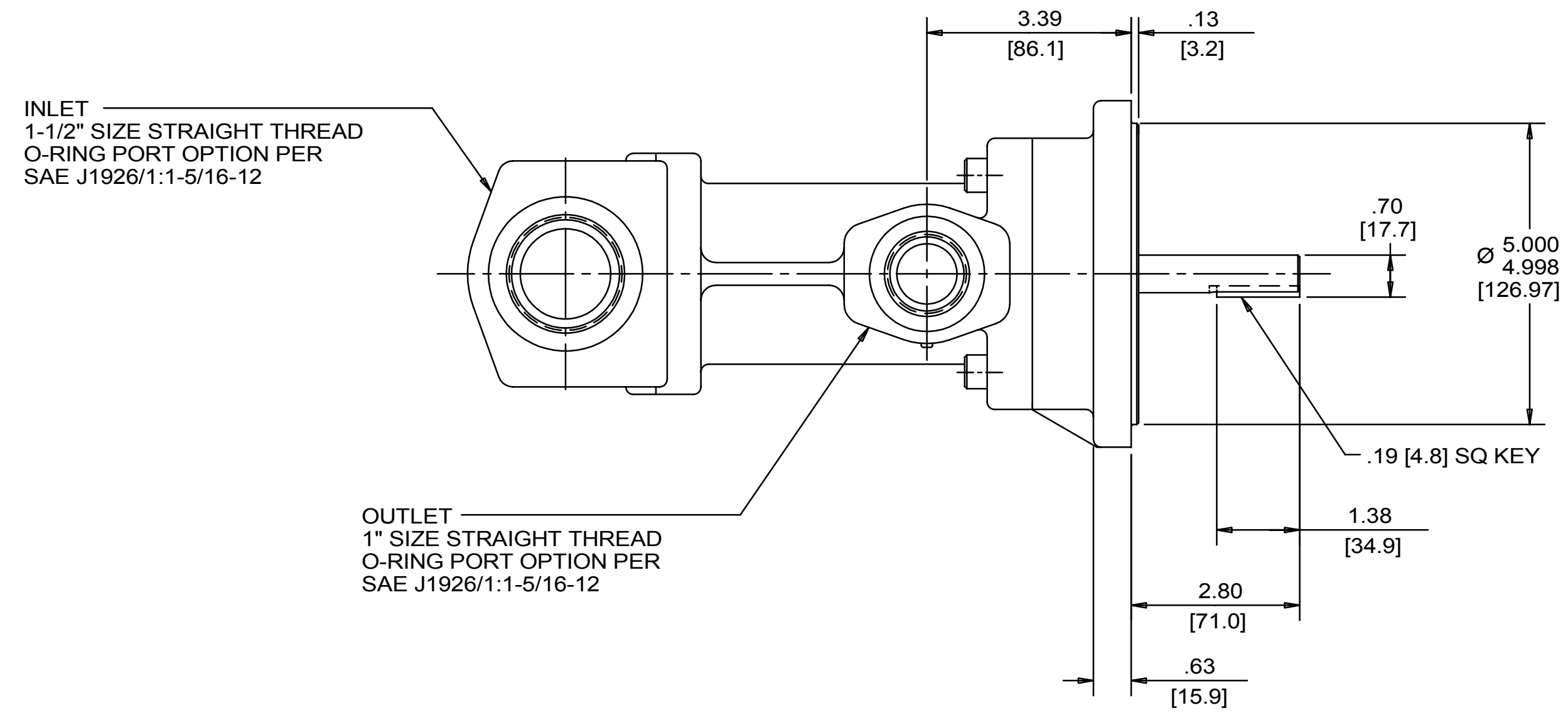
REVISION HISTORY					
CHG NO	ZONE	REV	DESCRIPTION	DATE	BY / APPROVED
11-0187	AI	5	CHANGED TITLE, WAS AA3G	5-17-11	ERH / ERH



INLET:  
 FX= 113 LBF [500 N]    MX= 188 LB FT [254 N.m]  
 FY= 113 LBF [500 N]    MY= 188 LB FT [254 N.m]  
 FZ= 113 LBF [500 N]    MZ= 188 LB FT [254 N.m]

OUTLET:  
 FX= 75 LBF [334 N]    MX= 125 LB FT [169 N.m]  
 FY= 75 LBF [334 N]    MY= 125 LB FT [169 N.m]  
 FZ= 75 LBF [334 N]    MZ= 125 LB FT [169 N.m]

FORCE AND MOMENT VALUES ARE RELATIVE TO CENTER OF INLET AND OUTLET PORT FACES.



DRAWING CERTIFICATION

12 O'CLOCK

9 O'CLOCK

3 O'CLOCK

6 O'CLOCK

\*\*\*SEE NOTES 1, 2 & 3\*\*\*

CUSTOMER NAME .....

CUSTOMER PO NUMBER .....

CUSTOMER PART NUMBER .....

BOM NUMBER .....

PUMP TYPE .....

SHAFT ROTATION .....

INLET PORT ORIENTATION .....

INLET PORT OPTION .....

INLET ADAPTER OPTION .....

OUTLET PORT OPTION .....

OUTLET ADAPTER OPTION .....

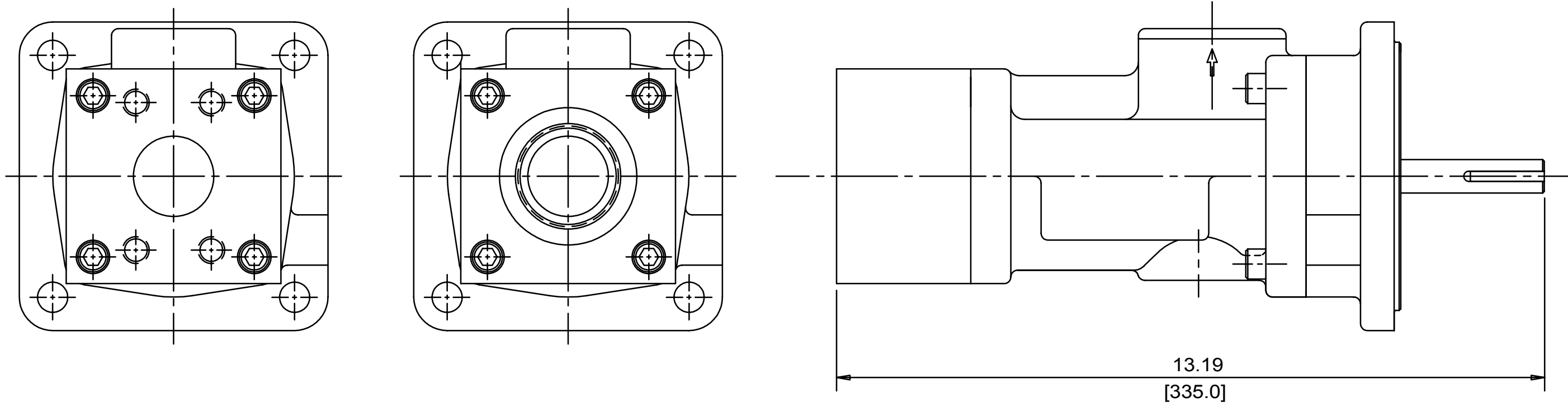
OTHER INFORMATION

CERTIFIED BY .....

CERTIFIED DATE .....

IMO ORDER NUMBER .....

DATA REVISION NUMBER .....



- NOTES:
1. PORT ORIENTATIONS SUPPLIED AS SHOWN UNLESS OTHERWISE SPECIFIED.
  2. ALTERNATE RADIAL INLET PORT ORIENTATIONS PROVIDED IF SPECIFIED ON ORDER. AVAILABLE ALTERNATE ORIENTATIONS ARE 3, 6, 9, AND 12 O'CLOCK RELATIVE TO OUTLET PORT.
  3. BOLT PATTERN FOR SAE 4-BOLT AXIAL INLET IS ALWAYS ORIENTED AS SHOWN WITH RESPECT TO OUTLET PORT.
  4. APPROXIMATE PUMP WEIGHT (WITHOUT ADAPTERS): 31.5 LBS. {14.3 kgs}
  5. UNLESS OTHERWISE SPECIFIED, ALL DIMENSIONS ARE IN INCHES. DIMENSIONS IN [ ] ARE MILLIMETERS.

DRAWN	NRS	6-15-99		<b>IMO Pump</b> 1710 Airport Road PO Box 5020 Monroe, NC USA 28111-5020
CHECKED	NRS	6-15-99		
APPROVED	NRS	6-15-99		
UNLESS OTHERWISE SPECIFIED ASME Y14.5M-1994				TITLE <b>OUTLINE STANDARD (IRON)</b> 3G/NN__JA118__
COMMENTS: SUCTION STRAINER AND DISCHARGE RELIEF VALVE MUST BE PROVIDED ALIGNMENT UNITS ARE ACCURATELY ALIGNED AT THE FACTORY. ALIGNMENT SHOULD BE CHECKED BEFORE STARTING TO INSURE THAT IT IS STILL WITHIN TOLERANCES. IDENTIFYING FLUSH SUCTION PUMP BEFORE CONNECTING PUMP. PRIME AND VENT PUMP. READ INSTRUCTION MANUAL FOR DETAILS BEFORE STARTING.				SCALE <b>F</b>
IDENTIFICATION FIRST ORDER E1101A				CAGE CODE <b>59180</b>
USED ON				PART NO. <b>SDD19713</b>
SCALE 1/2				WEIGHT SEE NOTE 4
SHEET 1 OF 1				