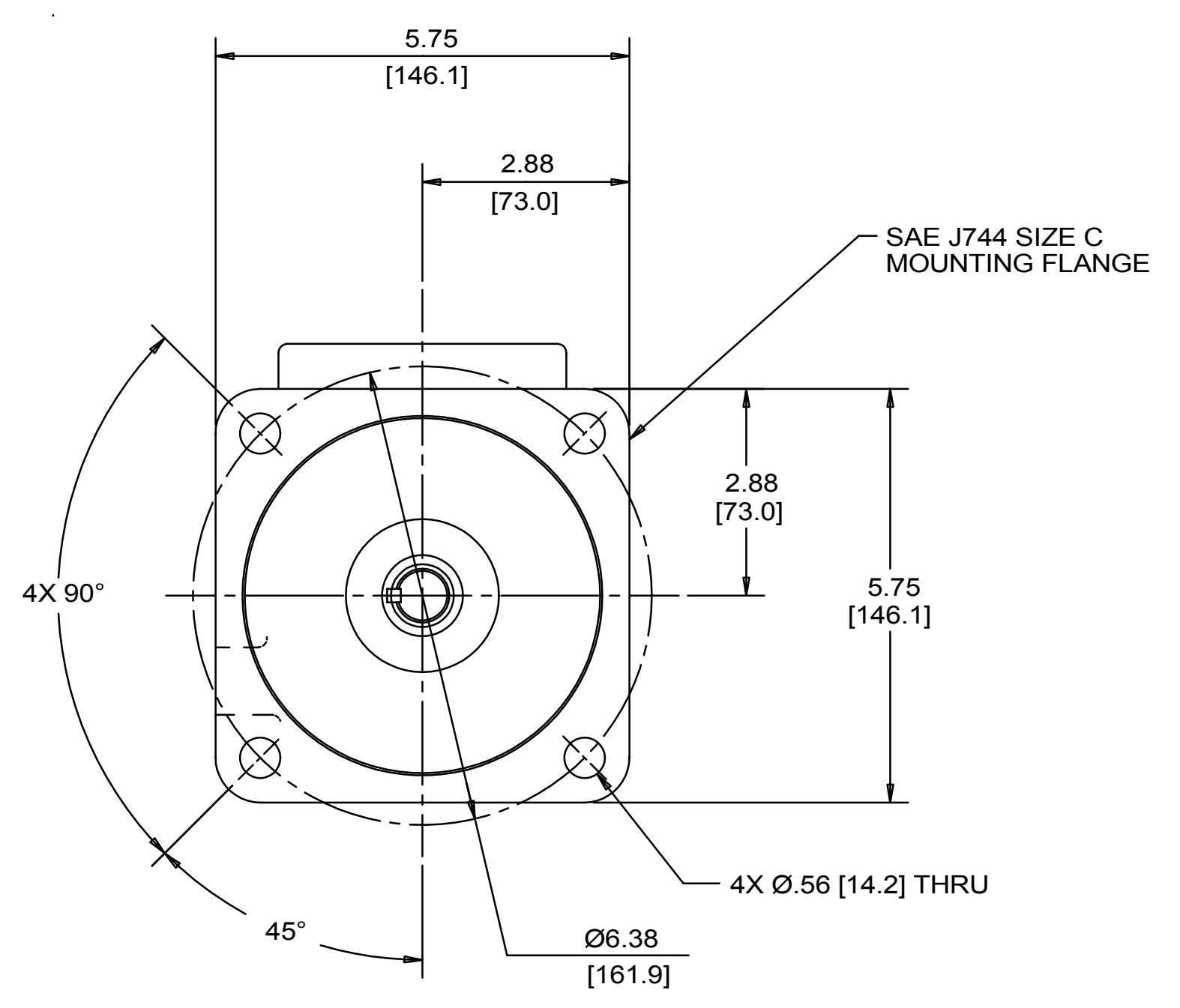
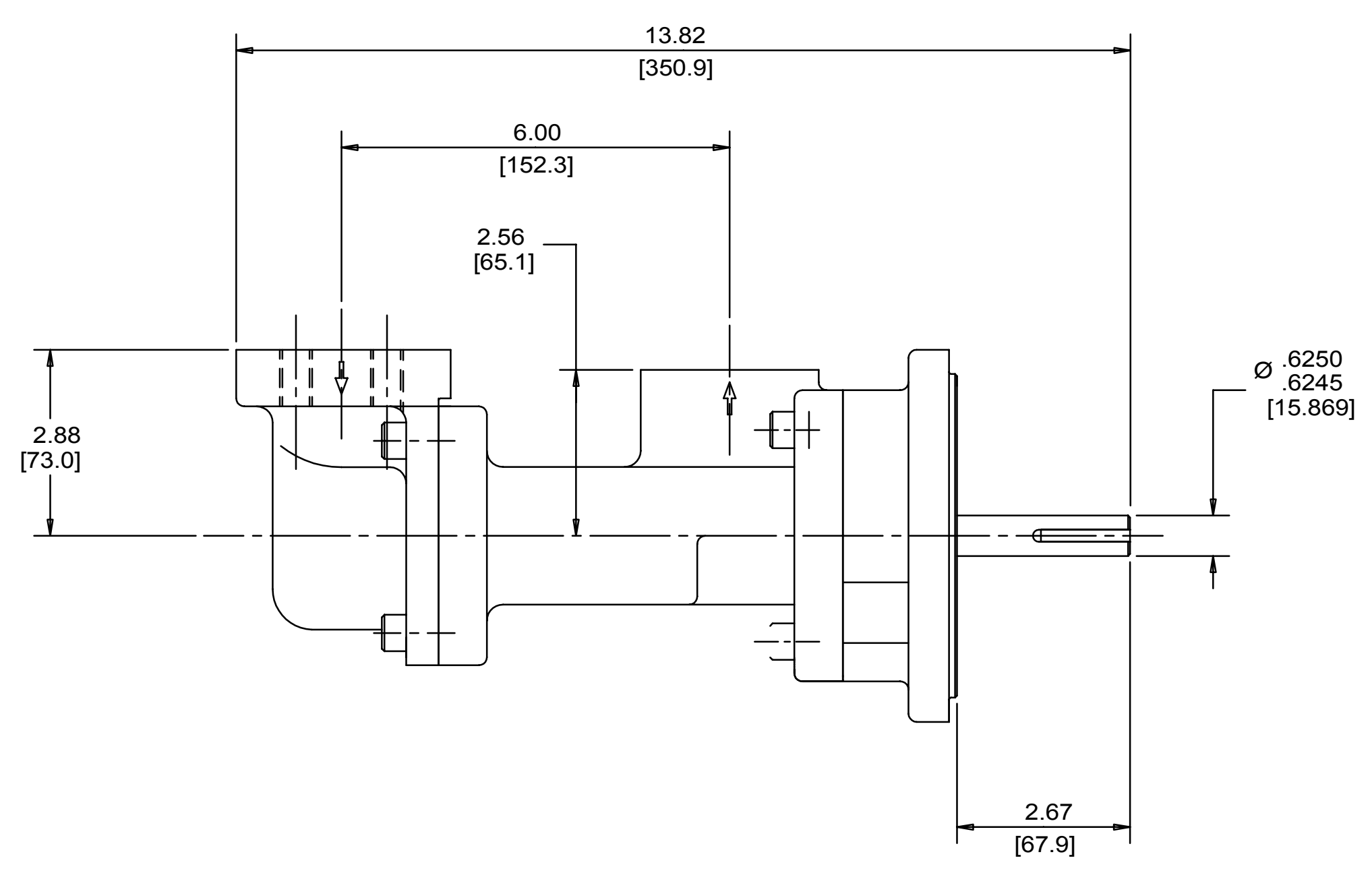
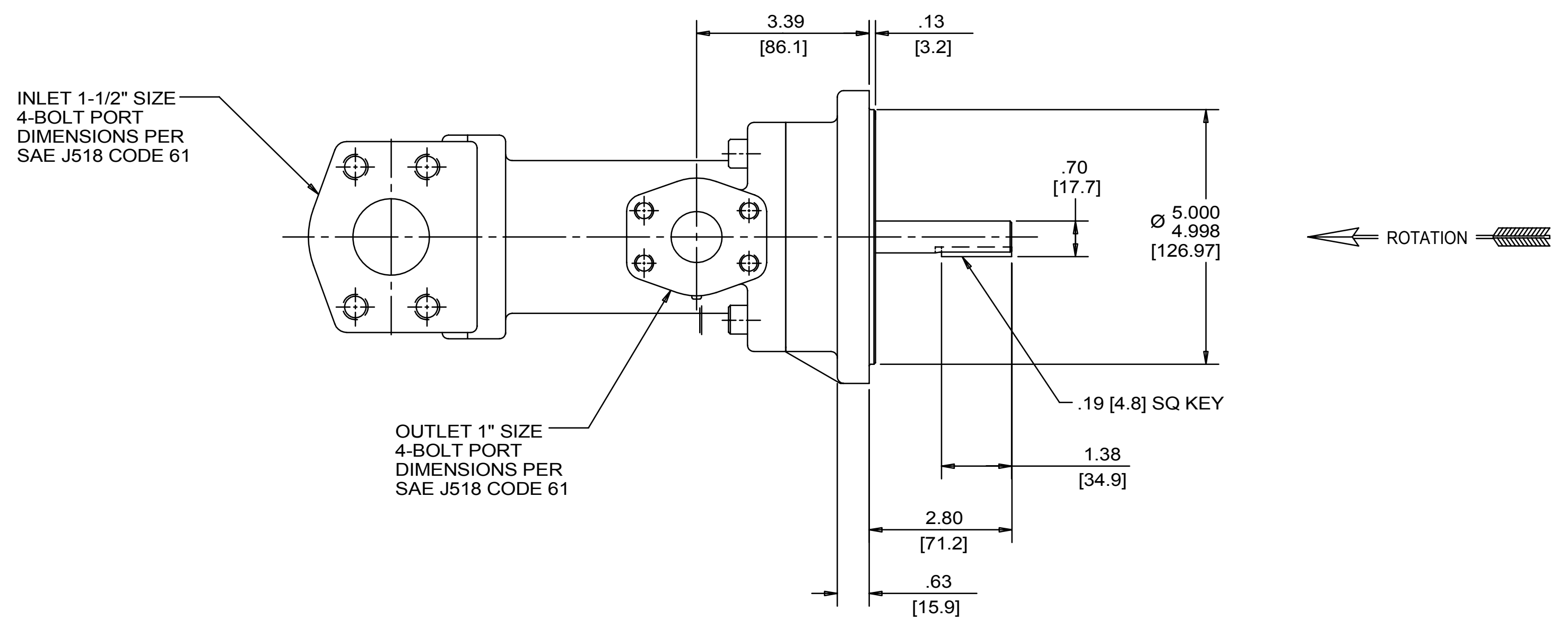
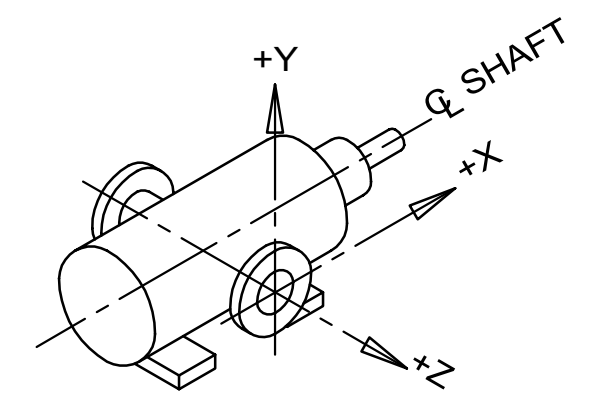
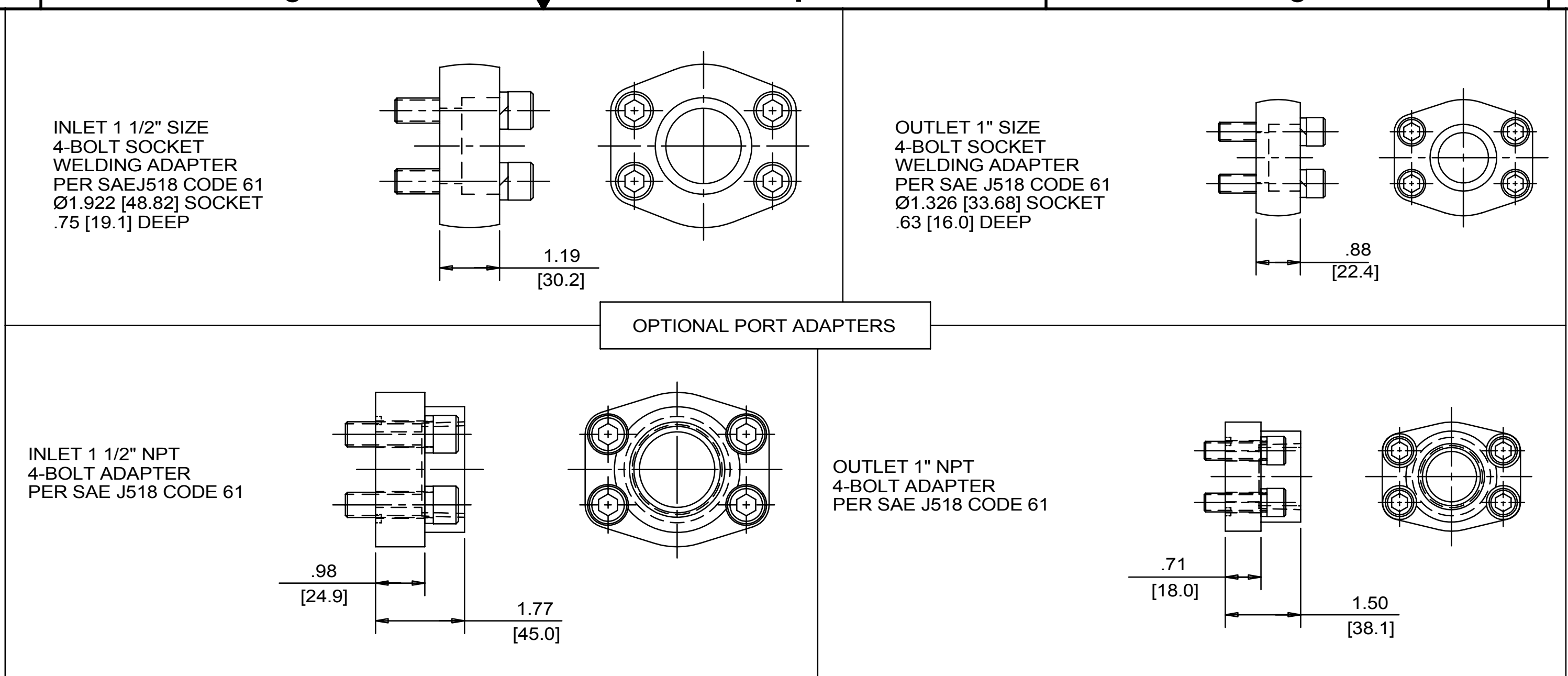


REVISION HISTORY				DATE	BY	APPROVED
CHG NO	ZONE	REV	DESCRIPTION			
11-0187	AI	5	CHANGED TITLE, WAS AA3G	5-17-11	ERH	ERH



DRAWING CERTIFICATION

12 O'CLOCK
 9 O'CLOCK
 3 O'CLOCK
 6 O'CLOCK
 SEE NOTES 1, 2 & 3

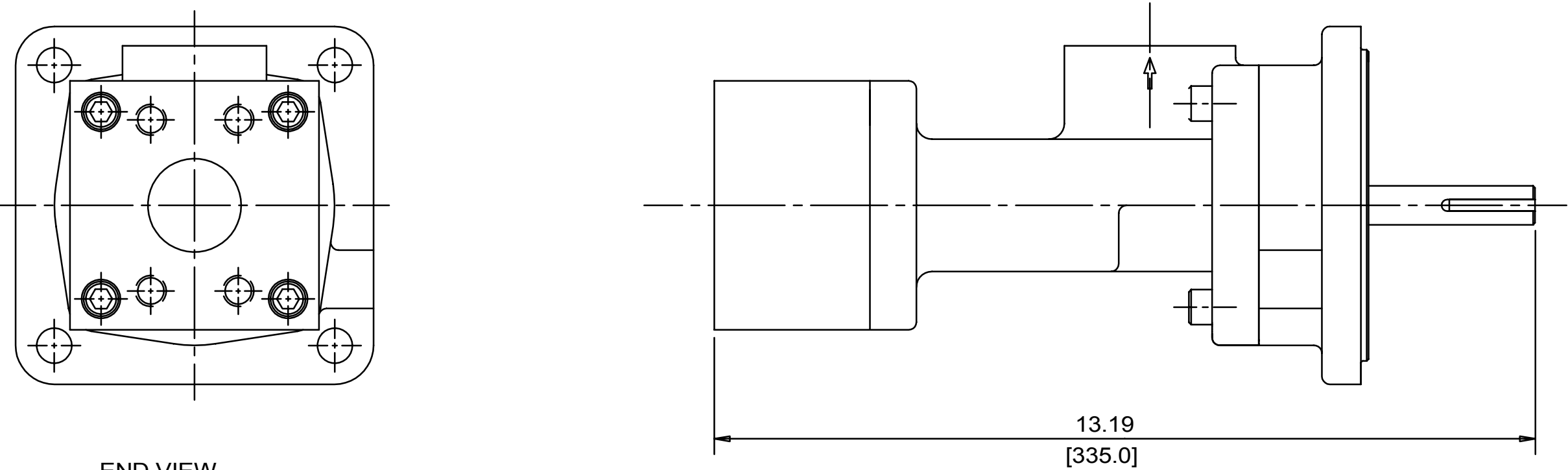
CUSTOMER NAME -----
 CUSTOMER PO NUMBER -----
 CUSTOMER PART NUMBER -----

BOM NUMBER -----
 PUMP TYPE -----
 SHAFT ROTATION -----
 INLET PORT ORIENTATION -----
 INLET PORT OPTION -----
 INLET ADAPTER OPTION -----
 OUTLET ADAPTER OPTION -----

OTHER INFORMATION -----

CERTIFIED BY -----
 CERTIFIED DATE -----
 IMO ORDER NUMBER -----
 DATA REVISION NUMBER -----

VIEWS FOR ALTERNATE AXIAL INLET PORT CONFIGURATION



- NOTES:**
1. PORT ORIENTATIONS SUPPLIED AS SHOWN UNLESS OTHERWISE SPECIFIED.
 2. ALTERNATE RADIAL INLET PORT ORIENTATIONS PROVIDED IF SPECIFIED ON ORDER. AVAILABLE ALTERNATE ORIENTATIONS ARE 3, 6, 9, AND 12 O'CLOCK RELATIVE TO OUTLET PORT.
 3. BOLT PATTERN FOR SAE 4-BOLT AXIAL INLET IS ALWAYS ORIENTED AS SHOWN WITH RESPECT TO OUTLET PORT.
 4. APPROXIMATE PUMP WEIGHT (WITHOUT ADAPTERS): 31.5 LBS. {14.3 kgs}
 5. UNLESS OTHERWISE SPECIFIED, ALL DIMENSIONS ARE IN INCHES. DIMENSIONS IN [] ARE MILLIMETERS.

END VIEW 1-1/2" SIZE 4-BOLT PORT DIMENSIONS PER SAE J518 CODE 61

DRAWN	NRS	6-15-99		Imo Pump 1710 Airport Road PO Box 5020 Monroe, NC USA 28111-5020
CHECKED	NRS	7-20-99		
APPROVED	NRS	7-26-99		
UNLESS OTHERWISE SPECIFIED ASME Y14.5M-1994			TITLE OUTLINE STANDARD (STEEL) 3G/NN5-IA188__	
COMMENTS: SUCTION STRAINER AND DISCHARGE RELIEF VALVE MUST BE PROVIDED ALIGNMENT: UNITS ARE ACCURATELY ALIGNED AT THE FACTORY. ALIGNMENT SHOULD BE CHECKED BEFORE STARTING TO ENSURE THAT IT IS STILL WITHIN TOLERANCES. PRESTARTING: FLUSH SUCTION PUMP BEFORE CONNECTING PUMP. PRIME AND VENT PUMP. READ INSTRUCTION MANUAL FOR DETAILS BEFORE STARTING.			FIRST ORDER E1102A	SCALE 1/2 WEIGHT SEE NOTE 4 SHEET 1 OF 1
PROCESS			SIZE F CAGE CODE 59180 DWG NO SDD19714	DATE 5-17-11 BY ERH APPROVED ERH