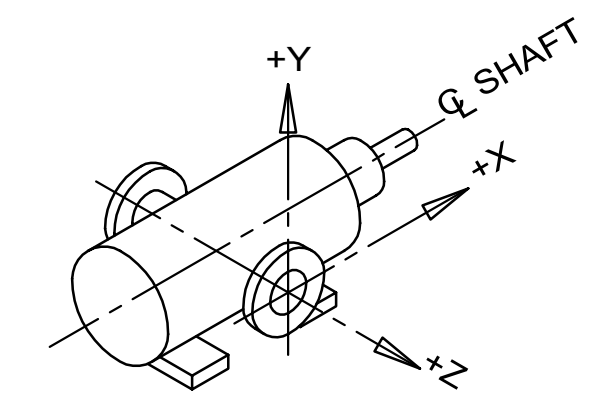
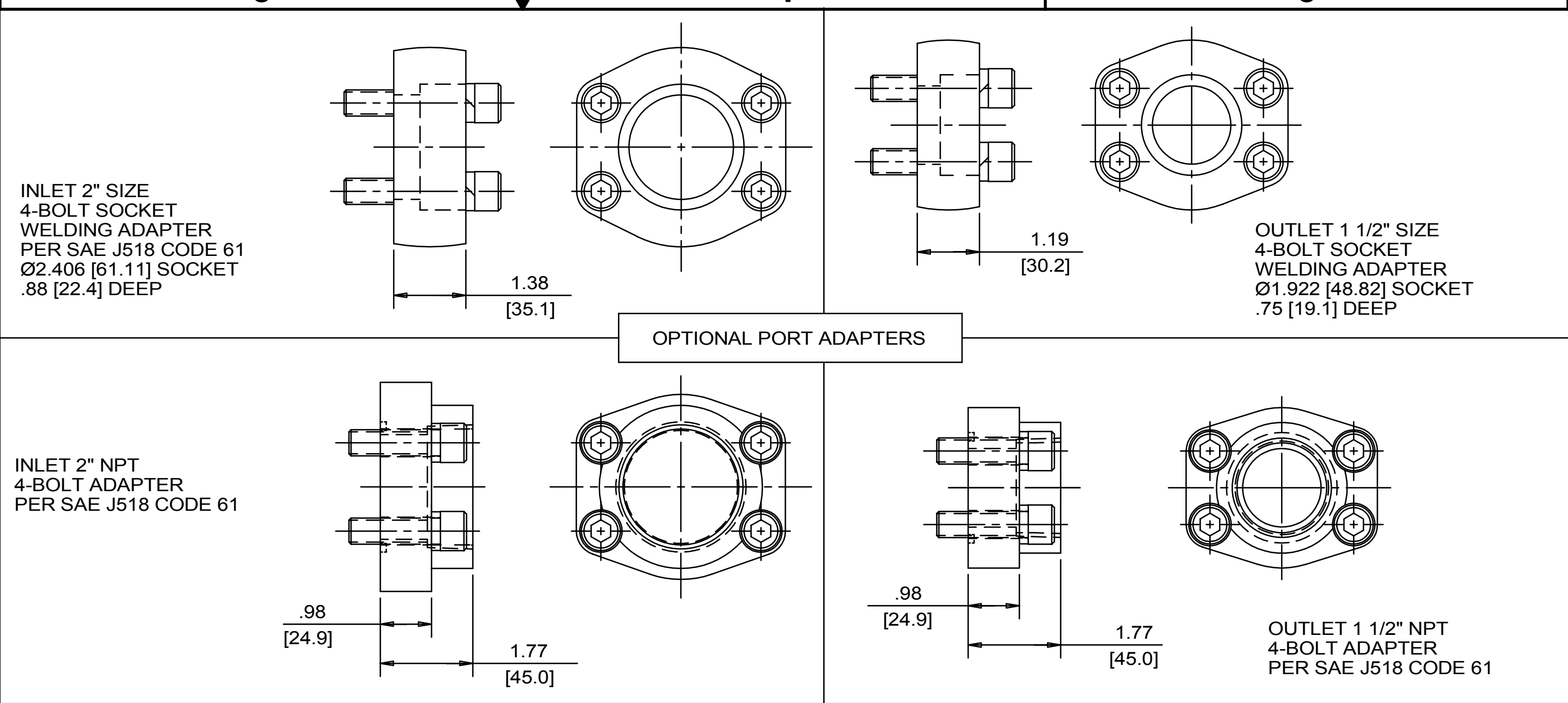


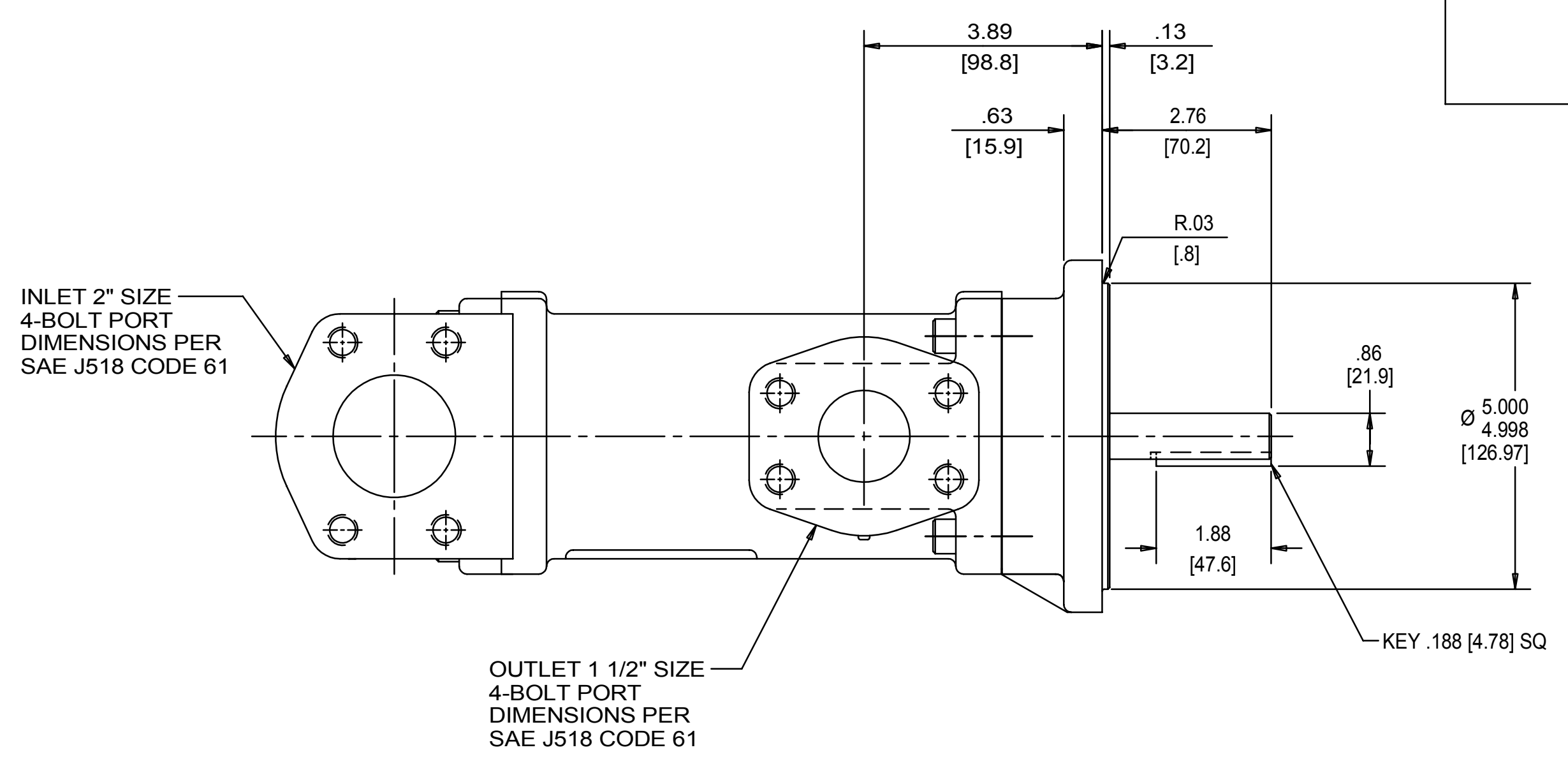
REVISION HISTORY					
CHG NO	ZONE	REV	DESCRIPTION	DATE	BY / APPROVED
11-0187	AI	7	CHANGED TITLE, WAS AA3G	5-17-11	ERH / ERH



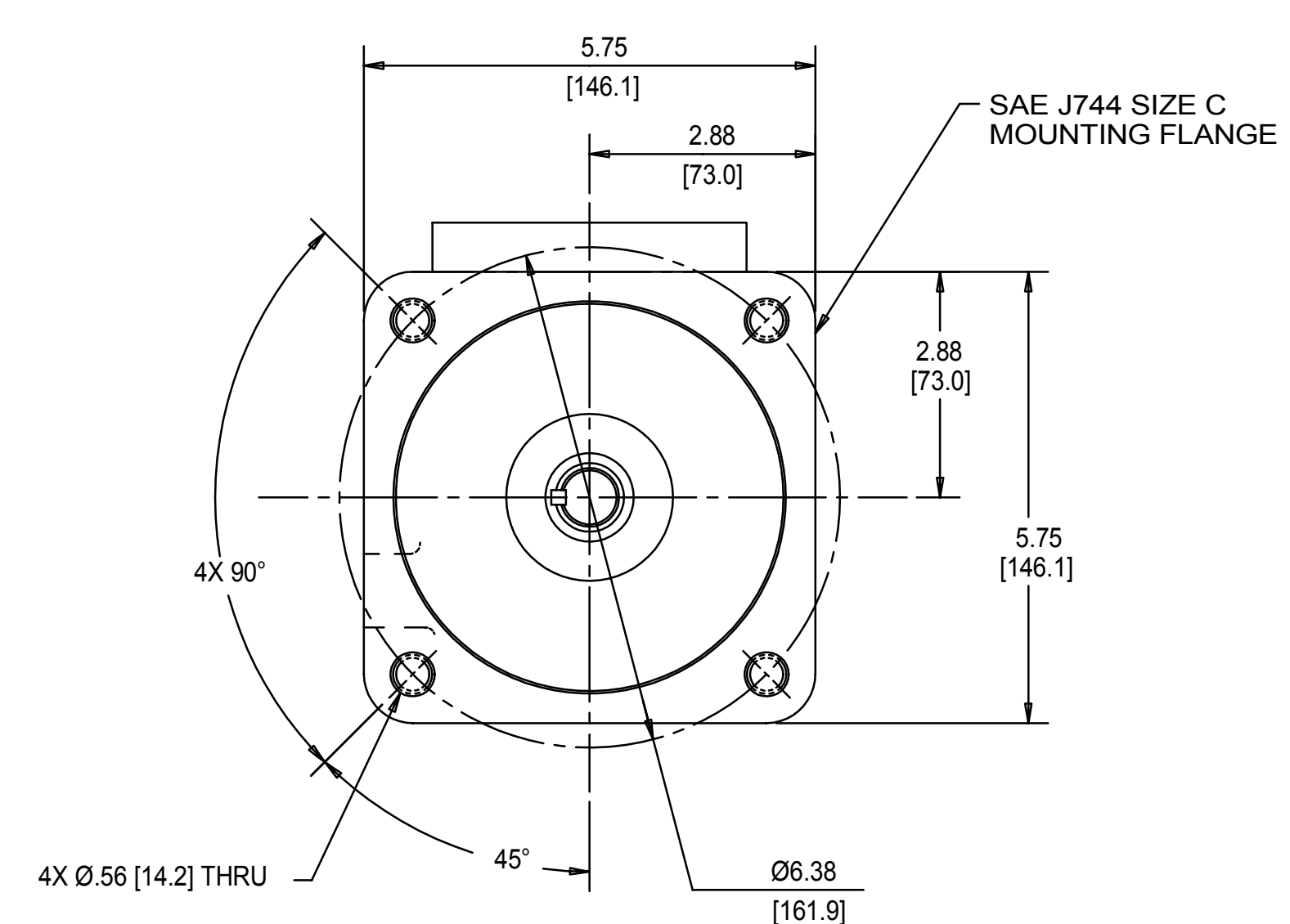
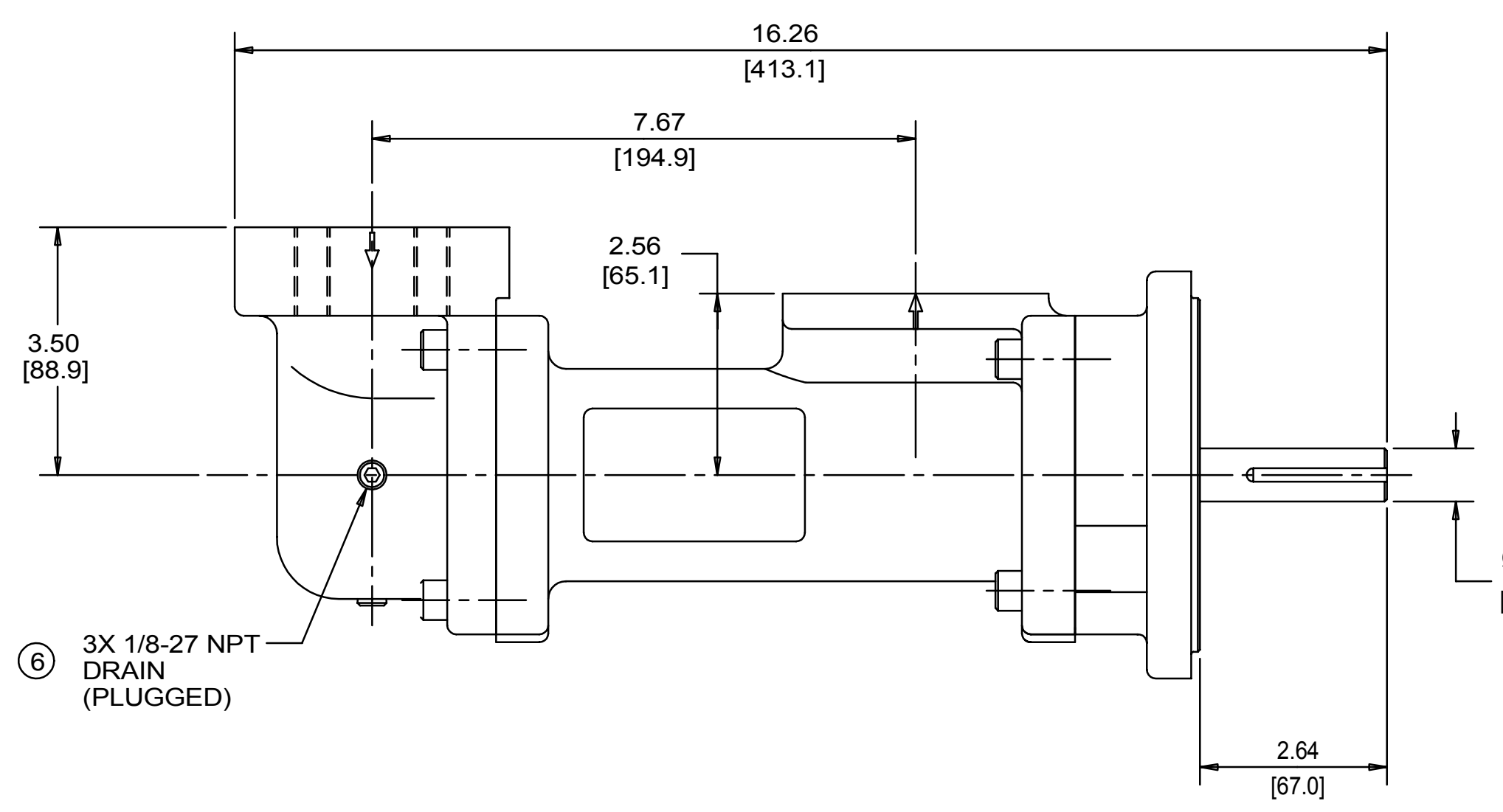
INLET:
 FX= 150 LBF [667 N] MX= 250 LB FT [339 N.m]
 FY= 150 LBF [667 N] MY= 250 LB FT [339 N.m]
 FZ= 150 LBF [667 N] MZ= 250 LB FT [339 N.m]

OUTLET:
 FX= 113 LBF [500 N] MX= 188 LB FT [254 N.m]
 FY= 113 LBF [500 N] MY= 188 LB FT [254 N.m]
 FZ= 113 LBF [500 N] MZ= 188 LB FT [254 N.m]

FORCE AND MOMENT VALUES ARE RELATIVE TO CENTER OF INLET AND OUTLET PORT FACES.



← ROTATION →



DRAWING CERTIFICATION

12 O'CLOCK OUTLET PORT

9 O'CLOCK SHAFT

3 O'CLOCK

6 O'CLOCK

SEE NOTES 1, 2 & 3

CUSTOMER NAME -----

CUSTOMER PO NUMBER -----

CUSTOMER PART NUMBER -----

BOM NUMBER -----

PUMP TYPE -----

SHAFT ROTATION -----

INLET PORT ORIENTATION -----

INLET PORT OPTION -----

INLET ADAPTER OPTION -----

OUTLET ADAPTER OPTION -----

OTHER INFORMATION -----

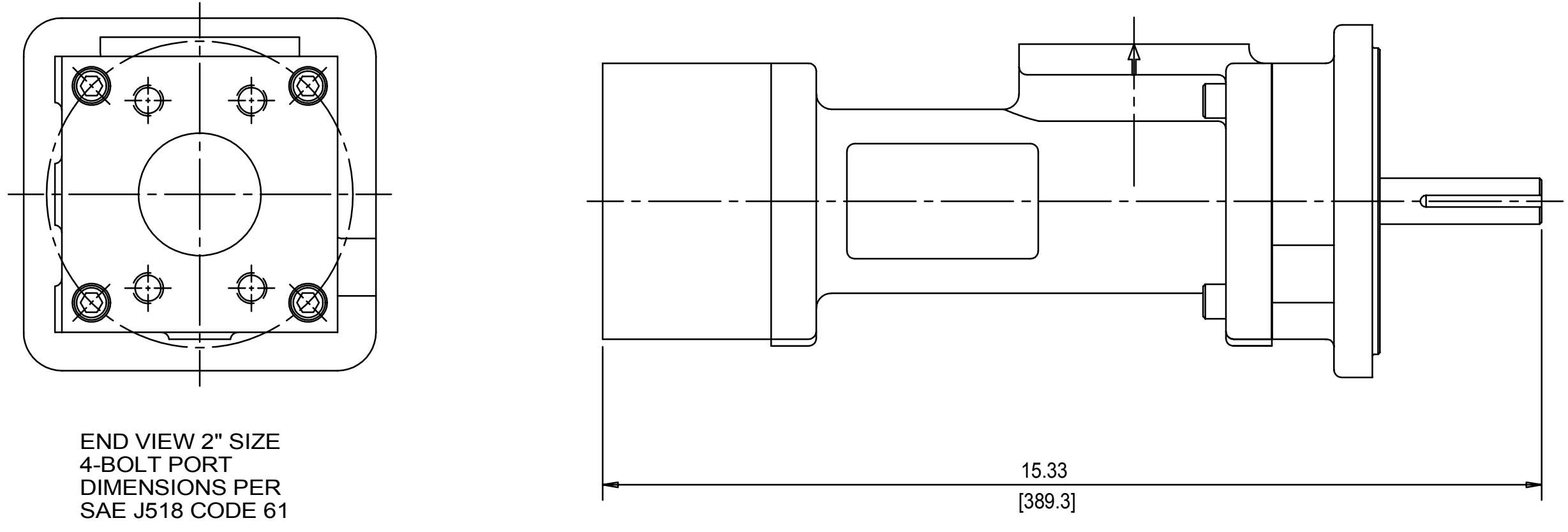
CERTIFIED BY -----

CERTIFIED DATE -----

IMO ORDER NUMBER -----

DATA REVISION NUMBER -----

VIEWS FOR ALTERNATE AXIAL INLET PORT CONFIGURATION



- NOTES:
1. PORT ORIENTATIONS SUPPLIED AS SHOWN UNLESS OTHERWISE SPECIFIED.
 2. ALTERNATE RADIAL INLET PORT ORIENTATIONS PROVIDED IF SPECIFIED ON ORDER. AVAILABLE ALTERNATE ORIENTATIONS ARE 3, 6, 9, AND 12 O'CLOCK RELATIVE TO OUTLET PORT.
 3. BOLT PATTERN FOR SAE 4-BOLT AXIAL INLET IS ALWAYS ORIENTED AS SHOWN WITH RESPECT TO OUTLET PORT.
 4. APPROXIMATE PUMP WEIGHT (WITHOUT ADAPTERS): 41.3 LBS. (18.8 kgs)
 5. UNLESS OTHERWISE SPECIFIED, ALL DIMENSIONS ARE IN INCHES. DIMENSIONS IN \varnothing ARE MILLIMETERS.

DRAWN	CDH	6-10-99		IMO Pump 1710 Airport Road PO Box 5020 Monroe, NC USA 28111-5020
CHECKED	NRS	7-20-99		
APPROVED	NRS	7-20-99	TITLE	OUTLINE STANDARD (STEEL)
METHODS			3C/NNS_IAT143/1621_	
UNLESS OTHERWISE SPECIFIED ASME Y14.9M-1994			FIRST ORDER	59180
<small> COMMENTS: SELECTION STRAINER AND DISCHARGE RELIEF VALVE MUST BE PROVIDED ALIGNMENT UNITS ARE ACCURATELY ALIGNED AT THE FACTORY. ALIGNMENT SHOULD BE CHECKED BEFORE STARTING TO ENSURE THAT IT IS STILL WITHIN TOLERANCES. PRECAUTIONS: FLUSH SUCTION PUMP BEFORE CONNECTING PUMP. PRIME AND VENT PUMP. READ INSTRUCTION MANUAL FOR DETAILS BEFORE STARTING. </small>			SCALE	1/2
			WEIGHT	SEE NOTE 4
			SHEET	1 OF 1