

REVISION HISTORY						
CHG NO	ZONE	REV	DESCRIPTION	DATE	BY	APPROVED
17-0383	ALL	01	REDRAWN AND UPDATED ON CAD	8-24-17	ERH	ERH
17-0383	A1,2	01	CHANGE TITLE TO _G3D_CS_-312_	8-24-17	ERH	ERH

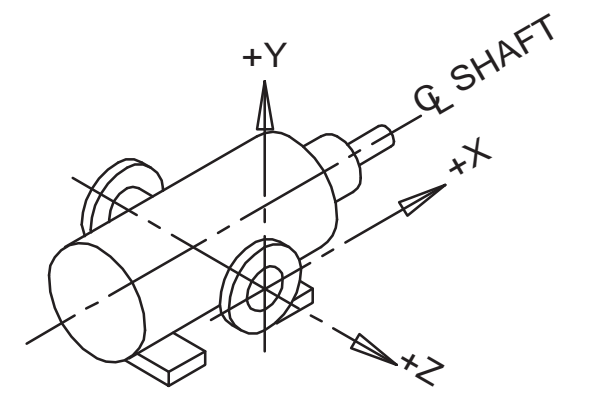
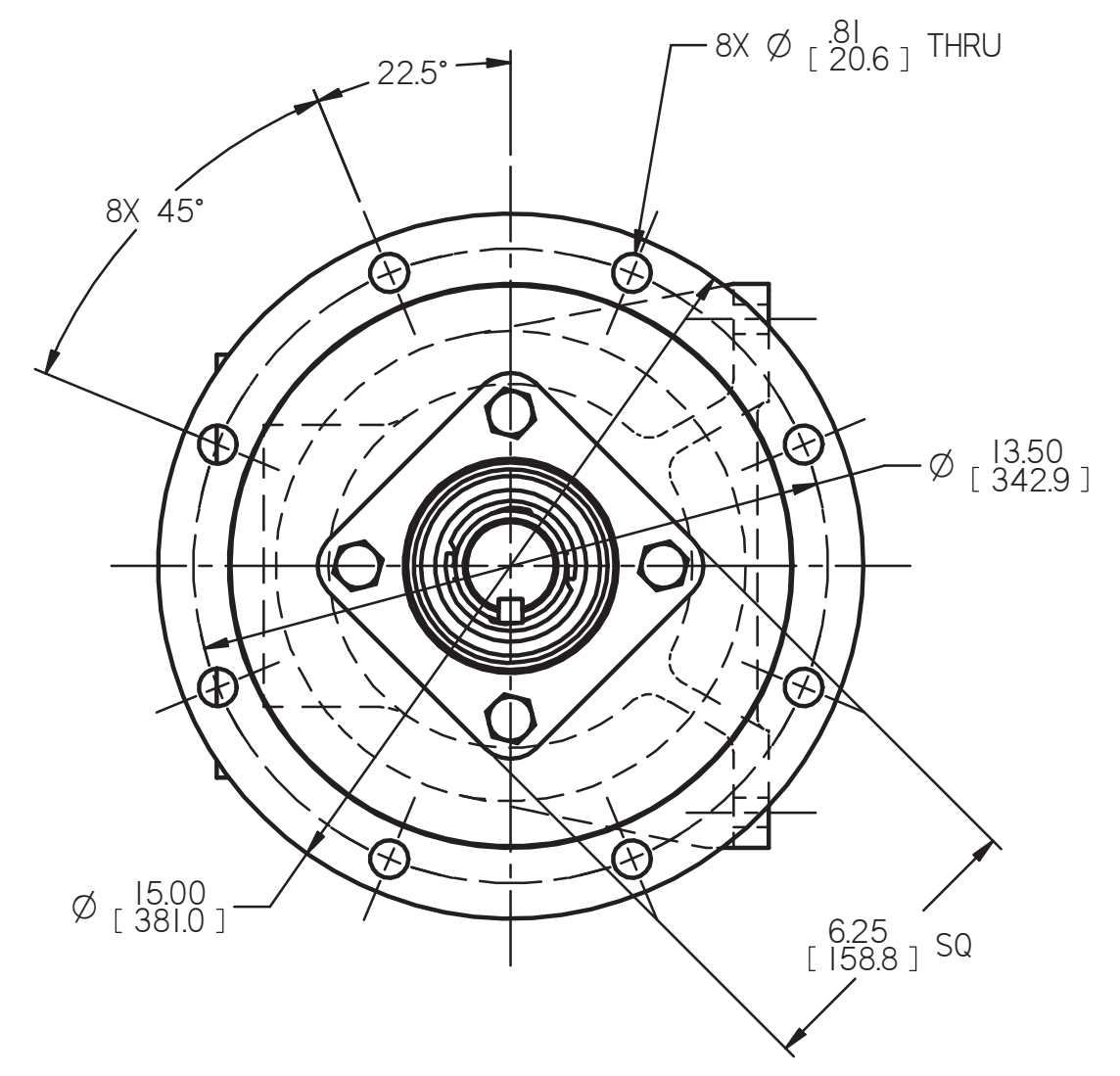
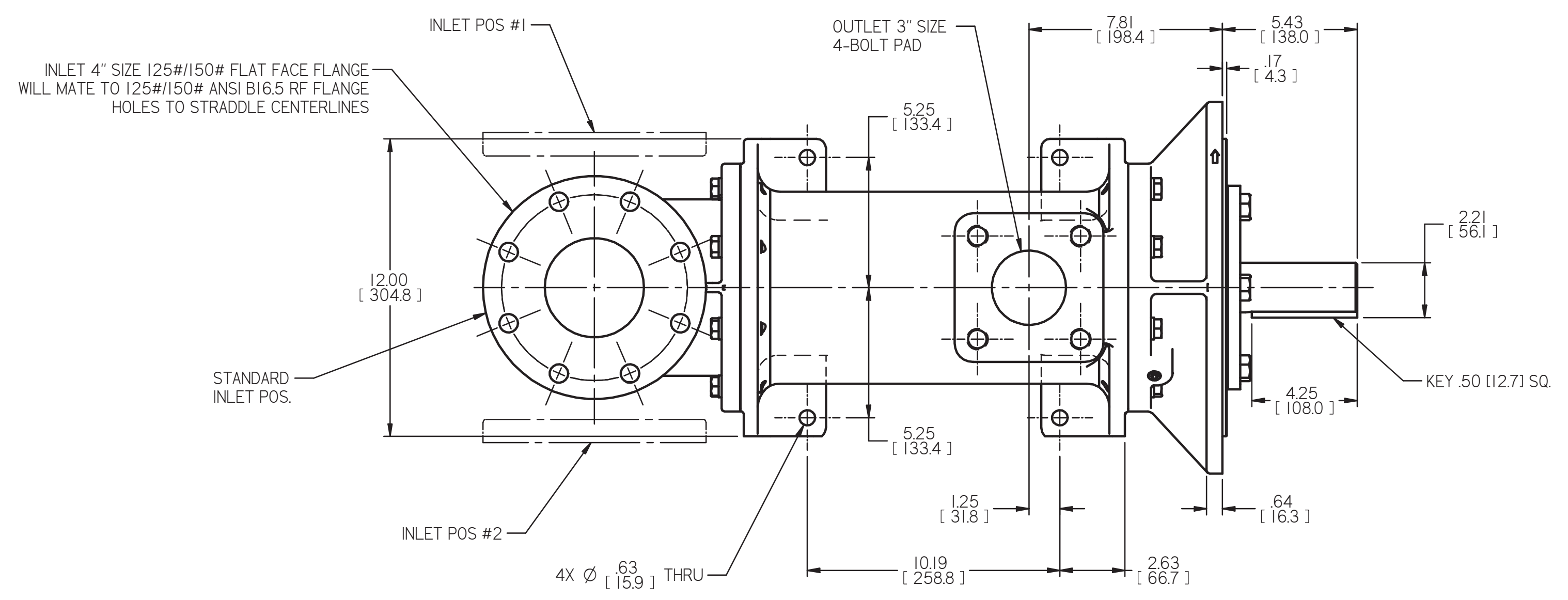
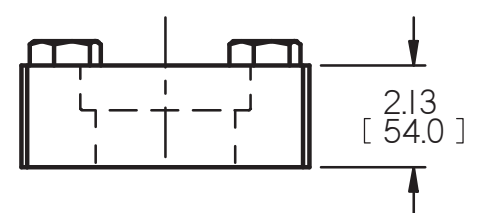
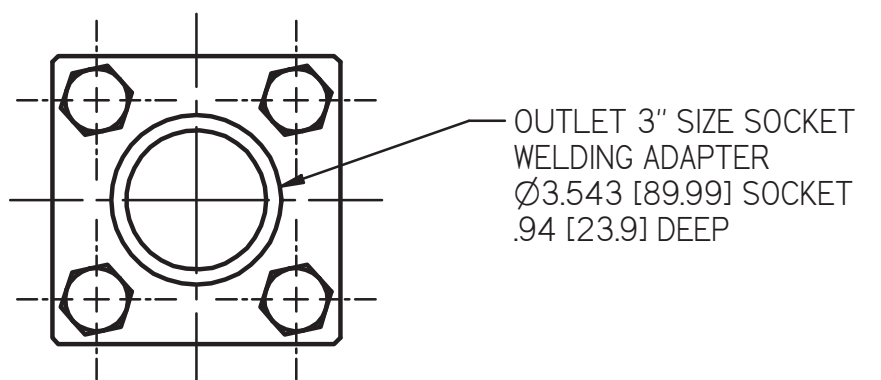
DRAWING CERTIFICATION

CUSTOMER NAME -----
 CUSTOMER PO NUMBER -----
 CUSTOMER PART NUMBER -----

BOM NUMBER -----
 PUMP TYPE -----
 SHAFT ROTATION -----
 INLET PORT POSITION -----
 OUTLET ADAPTER OPTION -----

OTHER INFORMATION

CERTIFIED BY -----
 CERTIFIED DATE -----
 IMO ORDER NUMBER -----
 DATA REVISION NUMBER -----



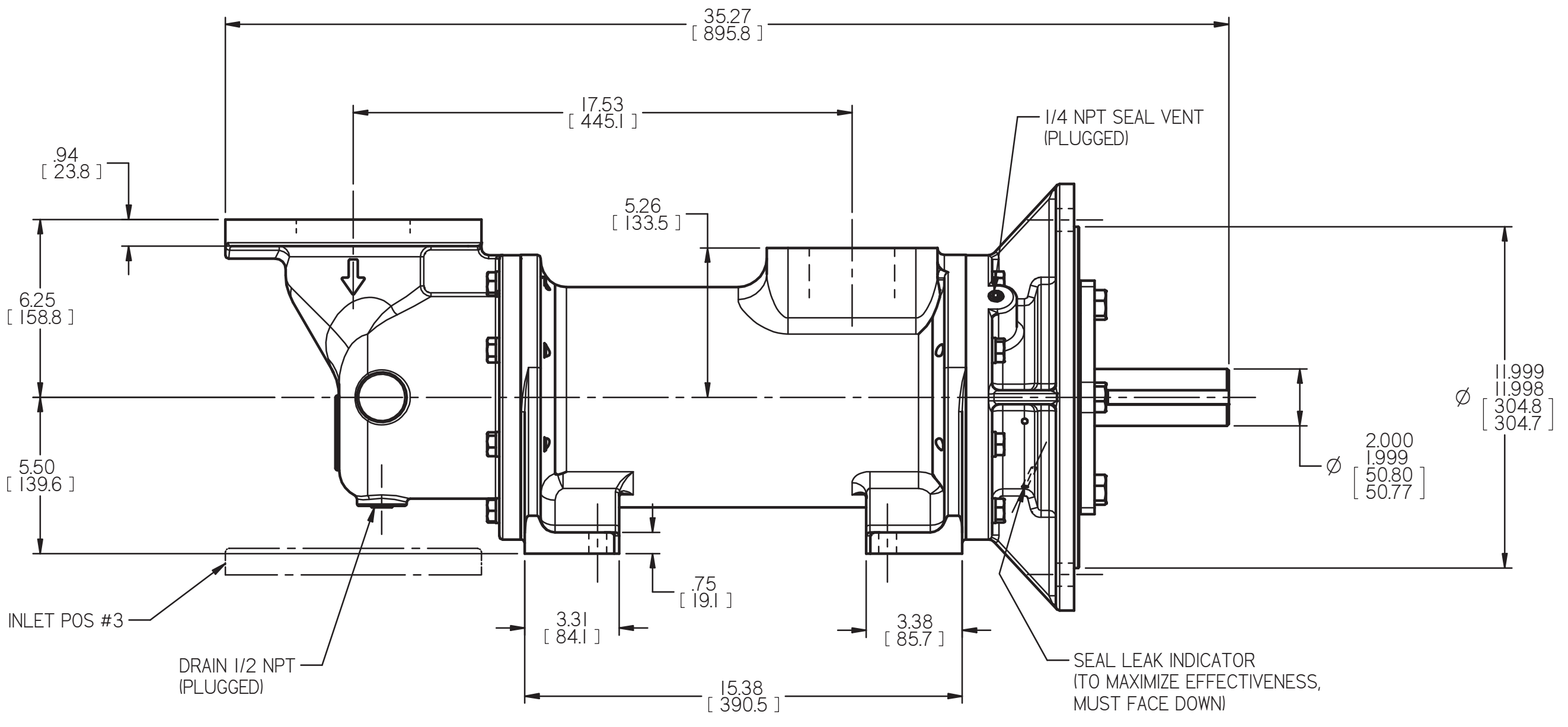
COORDINATE SYSTEM FOR MAXIMUM PUMP FORCES (F) AND MOMENTS (M)

INLET:
 FX= 300 LBF 1330 N MX= 500 LB FT 678 N.m
 FY= 300 LBF 1330 N MY= 500 LB FT 678 N.m
 FZ= 300 LBF 1330 N MZ= 500 LB FT 678 N.m

OUTLET:
 FX= 225 LBF 1000 N MX= 375 LB FT 508 N.m
 FY= 225 LBF 1000 N MY= 375 LB FT 508 N.m
 FZ= 225 LBF 1000 N MZ= 375 LB FT 508 N.m

FORCE AND MOMENT VALUES ARE RELATIVE TO CENTER OF INLET AND OUTLET PORT FACES.

- NOTES:**
- UNLESS OTHERWISE SPECIFIED, ALL DIMENSIONS ARE IN INCHES. DIMENSIONS IN [] ARE MILLIMETERS.
 - TO MAXIMIZE SEAL LIFE, SEAL VENT MUST BE ORIENTED UPWARD (12 O'CLOCK) WHEN PUMP IS INSTALLED HORIZONTALLY. THIS IS NORMAL VENT ORIENTATION WHEN PUMP FEET ARE ORIENTED DOWNWARD. SEAL VENT ORIENTATION IS NOT CRITICAL WHEN PUMP IS INSTALLED WITH SHAFT VERTICALLY UPWARD.
 - PORT, FOOT, AND SEAL VENT ORIENTATIONS ARE SUPPLIED AS SHOWN ON DRAWING UNLESS OTHERWISE SPECIFIED.
 - ESTIMATED WEIGHT IS WITHOUT PORT ADAPTERS



D
C
B
A

D
C
B
A

DRAWN	DMM	11-30-00			
CHECKED	DMM	12-6-00			
APPD	DMM	12-6-00			
COMMENTS: SUCTION STRAINER AND DISCHARGE RELIEF VALVE MUST BE PROVIDED. ALIGNMENT: UNITS ARE ACCURATELY ALIGNED AT THE FACTORY. ALIGNMENT SHOULD BE CHECKED BEFORE STARTING TO ENSURE THAT IT IS STILL WITHIN .005 (0.13) MM. PRESTARTING: FLUSH SUCTION PIPING BEFORE CONNECTING PUMP. PRIME AND VENT PUMP. READ INSTRUCTION MANUAL FOR DETAILS BEFORE STARTING. USED ON:			TITLE: OUTLINE STANDARD _G3D_CS_-312_		
FIRST ORDER: EB112A			SIZE: D	CAGE CODE: 59180	DWG NO: SDD20057
3220/159			SCALE: 1/4	WEIGHT: 318 LBS [144kg]	SHEET: OF: