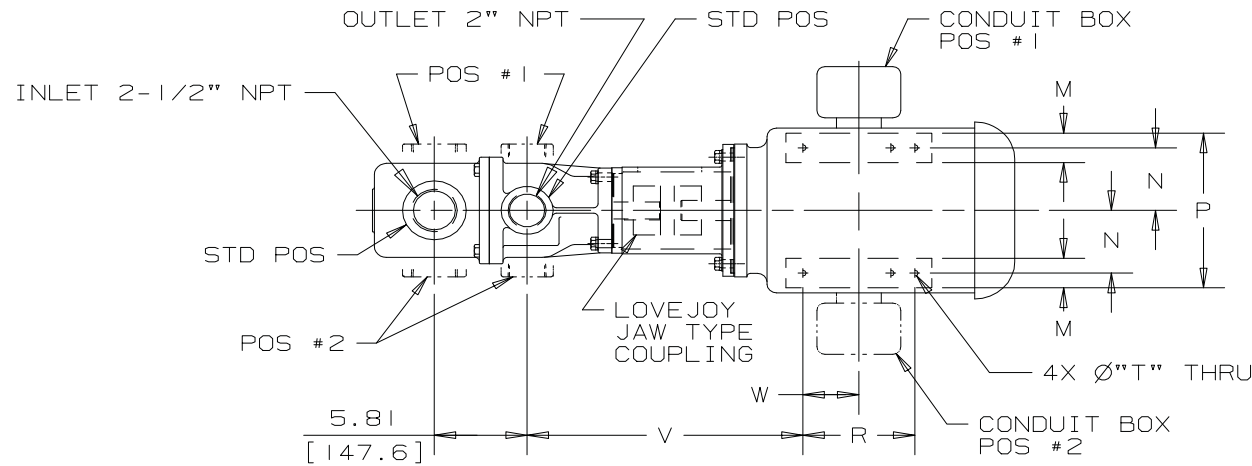
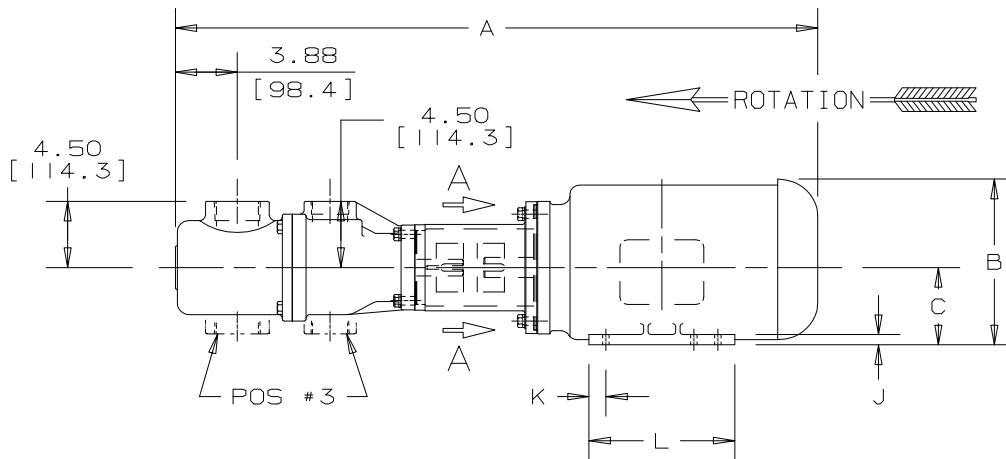
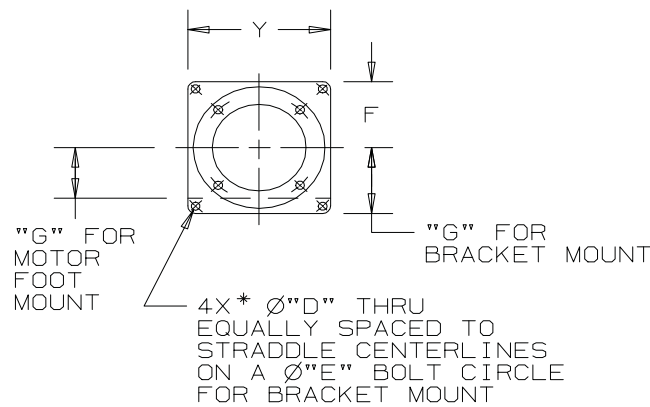


✓	ITEM NO.	NEMA MOTOR FRAME	UNITS	A	B	C	D	E	F	G	G	J	K	L	M	N	P	R	T	V	W	Y	APPROX. UNIT WT. LB/[kg]	COUPLING MODEL NO.	
										MTR. FT.	BRACKET MOUNT														
	001	56C	INCHES [mm]	33.6 [854]	7.1 [179]	3.50 [89]	0.69 [18]	11.25 [286]	4.5 [114]	3.4 [87]	4.5 [114]	---	0.13 [3]	0.50 [13]	4.0 [102]	1.75 [44]	2.44 [62]	6.5 [165]	3.00 [76]	0.34 [9]	14.2 [361]	1.5 [38]	8.9 [227]	136 [62]	L150
	002	143/145TC	INCHES [mm]	32.6 / 33.1 [829 / 842]	7.3 [184]	3.50 [89]	0.69 [18]	11.25 [286]	4.5 [114]	3.4 [87]	4.5 [114]	---	0.40 [10]	0.50 [13]	6.0 [152]	1.25 [32]	2.75 [70]	7.0 [178]	4.00 / 5.00 [102 / 127]	0.34 [9]	14.6 [370]	2.0 / 2.5 [51 / 64]	8.9 [227]	171 [78]	L150
	003	182/184TC	INCHES [mm]	37.1 / 37.6 [943 / 956]	9.9 [251]	4.50 [114]	0.56 [14]	11.25 [286]	4.5 [114]	4.5 [114]	4.5 [114]	---	0.50 [13]	1.50 [38]	8.5 [216]	1.80 [46]	3.75 [95]	9.0 [229]	4.5 / 5.50 [114 / 140]	0.41 [10]	16.4 [416]	2.3 / 2.8 [57 / 70]	8.9 [227]	200 [91]	L110
	004	213/215TC	INCHES [mm]	39.5 / 40.2 [1002 / 1021]	11.3 [286]	5.25 [133]	0.56 [14]	11.25 [286]	4.5 [114]	4.5 [114]	4.5 [114]	---	0.70 [18]	1.06 [27]	9.1 [232]	2.00 [51]	4.25 [108]	10.5 [267]	5.50 / 7.00 [140 / 178]	0.41 [10]	17.3 [438]	2.8 / 3.5 [70 / 89]	8.9 [227]	255 [116]	L110
	005	254/256TC	INCHES [mm]	42.8 / 43.7 [1087 / 1110]	13.4 [340]	6.25 [159]	0.56 [14]	11.25 [286]	4.5 [114]	4.5 [114]	4.5 [114]	---	0.80 [20]	1.25 [32]	12.5 [318]	2.65 [67]	5.00 [127]	12.5 [318]	8.25 / 10.00 [210 / 254]	0.53 [13]	17.8 [451]	4.1 / 5.0 [105 / 127]	8.9 [227]	345 [157]	L110
	006	284/286TSC	INCHES [mm]	44.1 / 44.9 [1121 / 1140]	14.8 [376]	7.0 [178]	0.56 [14]	13.0 [330]	5.6 [143]	5.6 [143]	5.6 [143]	---	0.80 [20]	1.50 [38]	14.0 [356]	2.80 [71]	5.50 [140]	14.0 [356]	9.50 / 11.00 [241 / 279]	0.53 [13]	17.1 [435]	4.8 / 5.5 [121 / 140]	11.3 [286]	459 [209]	L150
	007	324/326TSC	INCHES [mm]	47.0 / 47.8 [1194 / 1213]	16.6 [422]	8.0 [203]	0.69 [18]	16.0 [406]	7.0 [177]	7.0 [177]	7.0 [177]	---	0.90 [23]	1.75 [44]	15.5 [394]	3.2 [81]	6.25 [159]	16.0 [406]	10.50 / 12.00 [267 / 305]	0.66 [17]	18.1 [460]	5.3 / 6.0 [133 / 152]	13.9 [354]	553 [251]	L150
	008	364/365TSC	INCHES [mm]	49.1 / 50.1 [1248 / 1273]	18.5 [470]	9.0 [229]	0.69 [18]	16.0 [406]	7.0 [177]	7.0 [177]	7.0 [177]	---	1.00 [25]	1.98 [50]	16.2 [411]	4.0 [102]	7.00 [178]	18.0 [457]	11.25 / 12.25 [286 / 311]	0.66 [17]	18.8 [477]	5.6 / 6.1 [143 / 155]	13.9 [354]	820 [373]	L150



VIEW A-A



NOTE: UNLESS OTHERWISE SPECIFIED, ALL DIMENSIONS ARE IN INCHES. DIMENSIONS IN [ ] ARE MILLIMETERS.

--- NOTES ---

1. THIS IS A STANDARD PRE-ENGINEERED UNIT OUTLINE. ANY CHANGES OUTSIDE THE CERTIFICATION BLOCK WILL REQUIRE A NEW DRAWING ASSIGNMENT.
2. ALTERNATE PORT POSITIONS ARE PROVIDED IF SPECIFIED ON ORDER. AVAILABLE POSITIONS ARE STD, #1, #2 & #3.
3. DRIVER DIMENSIONS MAY VARY WITH TYPE AND MAKE OF DRIVER.
4. STANDARD SHAFT ROTATION IS CLOCKWISE WHEN FACING COUPLING END OF PUMP.
5. REVIEW GENERAL INSTRUCTION MANUAL FOR ALIGNMENT, PIPING, INLET STRAINER, DISCHARGE RELIEF VALVE, SEAL, VENT, ETC., CONSIDERATIONS BEFORE INSTALLING AND OPERATING UNIT.

REV. NO.	ECR NO.	DATE	APPROVED BY



DRAWN BY	DATE	APPROVED BY	DATE
D.Mashburn	5/10/01	M.Vena	5/10/01
CHECKED BY	DATE	FIRST ORDER NUMBER	
M.Vena	5/10/01	EB122A	

**DRAWING CERTIFICATION**

CUSTOMER NAME -----

CUSTOMER PO NUMBER ----

CUSTOMER PART NUMBER --

UNIT BILL OF MAT'L NO. --

PUMP TYPE -----

ITEM NUMBER -----

MOUNT TYPE -----

SHAFT ROTATION -----

INLET PORT POSITION ---

OUTLET PORT POSITION --

MOTOR MANUFACTURER ----

MOTOR TYPE -----

FRAME SIZE -----

POWER -----

ROTATING SPEED -----

PHASES -----

FREQUENCY -----

VOLTAGE -----

MOTOR WEIGHT -----

CONDUIT BOX POSITION --

MOTOR INSTALLED BY ----

CERTIFIED BY -----

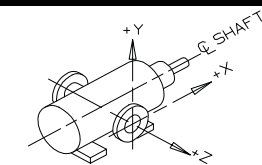
CERTIFICATION DATE ----

IMO ORDER NUMBER -----

CERTIFICATION REV. NO. --

NOTES:

**MAX. ALLOWABLE FORCES & MOMENTS ON PORTS**



- COORDINATE SYSTEM FOR MAXIMUM PORT FORCES (F) AND MOMENTS (M).
- FORCE AND MOMENT VALUES ARE RELATIVE TO CENTER OF INLET AND OUTLET PORT FACES.

	FORCE	LB-F	[N]	MOMENT	LB-FT	[N m]
INLET	FX	46.9	[209]	MX	78.1	[106]
	FY	46.9	[209]	MY	78.1	[106]
	FZ	46.9	[209]	MZ	78.1	[106]
OUTLET	FX	37.5	[169]	MX	62.5	[84.7]
	FY	37.5	[169]	MY	62.5	[84.7]
	FZ	37.5	[169]	MZ	62.5	[84.7]

STANDARD UNIT OUTLINE DRAWING			
IRON CASE FLANGE MOUNT 3E187/200			
CAGE CODE	DWG SIZE	SHEET	DRAWING NUMBER
59180	B	1 of 1	<b>SDD20078</b>