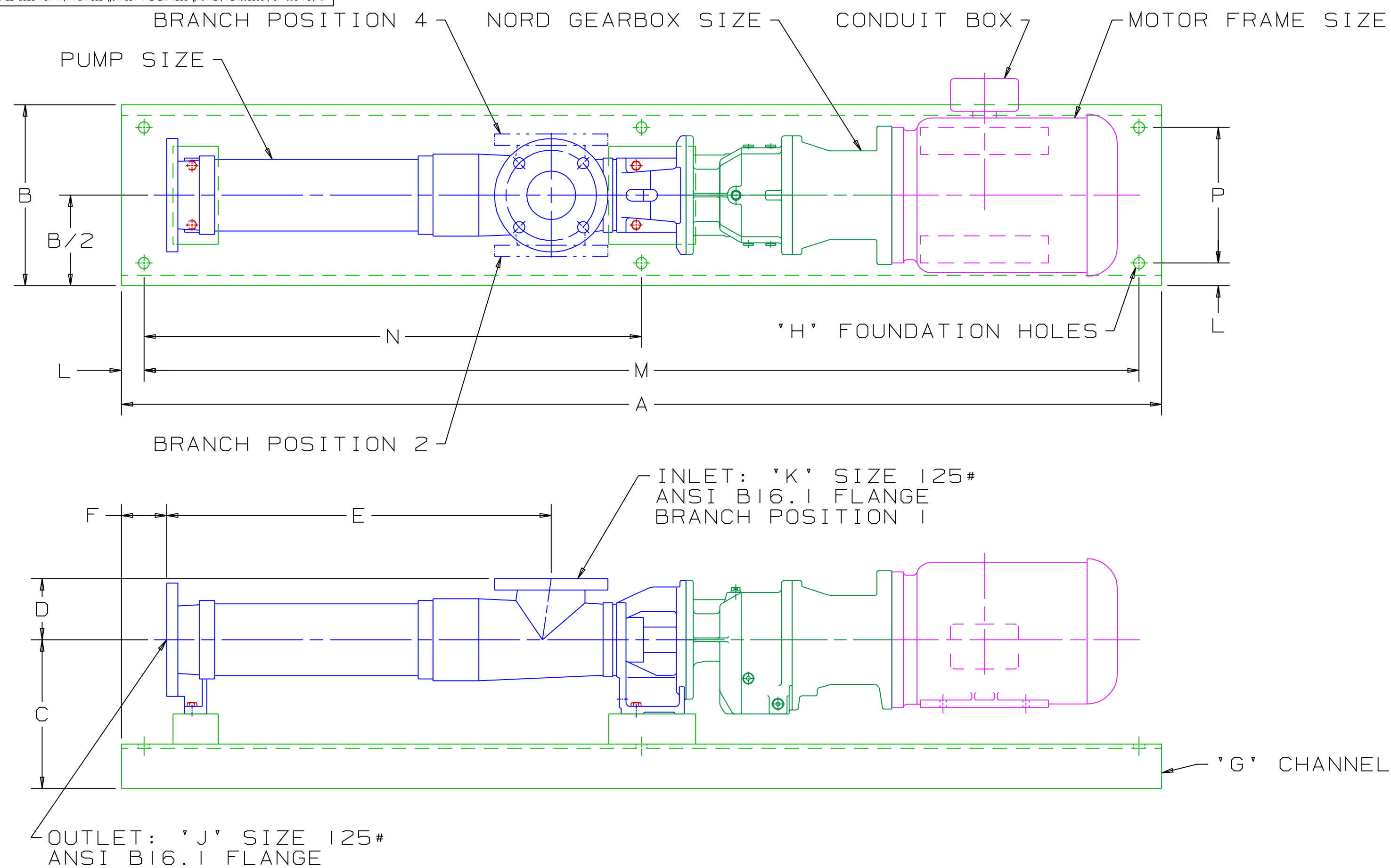


THIS DOCUMENT IS THE SOLE PROPERTY OF IMO PUMP AND IS FURNISHED SUBJECT TO RESTRICTIONS OF DISCLOSURE. DIMENSIONS AND TOLERANCES ARE PROPRIETARY TO IMO PUMP. THIS DRAWING IS NOT TO BE USED FOR ANY PURPOSE WITHOUT THE EXPRESS WRITTEN PERMISSION OF IMO PUMP.

REVISION HISTORY					
CHG NO	ZONE	REV	DESCRIPTION	DATE	BY / APPROVED
05-0004	ALL	4	REDRAWN, 1/4 SCALE WAS 1/8, 'D' SIZE BORDER WAS 'C'	1-5-05	DMM / DMM
05-0131	ALL	5	ADDED BEDPLATE COLUMN, REMOVED NTR SUPPORTS	6-6-05	ERH / MV
07-0497	A B	06	ADDED ITEM NUMBER 23	11-05-07	BMR / BMR



DRAWING CERTIFICATION

CUSTOMER NAME -----

CUSTOMER PO NUMBER -----

CUSTOMER PART NUMBER -----

PUMP DATA

ITEM NUMBER -----

PUMP SIZE -----

SHAFT ROTATION -----

INLET POSITION -----

GEAR BOX DATA

GEAR BOX MODEL NO. -----

SPEED -----

MOTOR DATA

MOTOR -----

FRAME -----

TYPE -----

H.P. -----

RPM -----

PHASE -----

HERTZ -----

VOLTS -----

DRIVER DIMENSIONS MAY VARY WITH TYPE AND MAKE OF DRIVER.

OTHER INFORMATION

CERTIFIED BY -----


CERTIFIED DATE -----

IMO ORDER NUMBER -----

DATA REVISION NUMBER ---

ITEM NUMBER	PUMP SIZE	GEARBOX SIZE	MOTOR FRAME	A	B	C	D	E	F	G	H	J	K	L	M	N	P	WEIGHT (LBS)	BEDPLATE GRP NO.
1	051	SK02	145	50	10	8.14	3.23	15.9	3	C10 X 15.3#/FT	4X Ø3/4 THRU	1.5	1.5	1.5	47	----	7	238	PCBP20132A
2	101	SK02	145	52	10	8.14	3.19	17.56	3	C10 X 15.3#/FT	4X Ø3/4 THRU	2	2	1.5	49	----	7	248	PCBP20132A
3	101	SK12	145	52	10	8.14	3.19	17.56	3	C10 X 15.3#/FT	4X Ø3/4 THRU	2	2	1.5	49	----	7	252	PCBP20132A
4	201	SK12	145	57	10	8.54	3.50	21.10	3	C10 X 15.3#/FT	4X Ø3/4 THRU	2.5	2.5	1.5	54	----	7	273	PCBP20132A
5	201	SK22	182	63	12	8.88	3.50	21.10	3	C12 X 20.7#/FT	4X Ø3/4 THRU	2.5	2.5	1.5	60	30	9	380	PCBP20132B
6	381	SK22	184	69	12	9.86	4.06	25.51	3	C12 X 20.7#/FT	6X Ø3/4 THRU	3	3	1.5	66	33	9	448	PCBP20132B
7	381	SK32	215	73	15	10.32	4.06	25.51	3	C15 X 33.9#/FT	6X Ø3/4 THRU	3	3	1.5	70	35	12	686	PCBP20132C
8	751	SK32	184	78	12	10.45	4.80	31.97	3	C12 X 20.7#/FT	6X Ø3/4 THRU	4	4	1.5	75	37.5	9	558	PCBP20132B
9	751	SK32	215	80	15	10.91	4.80	31.97	3	C15 X 33.9#/FT	6X Ø3/4 THRU	4	4	1.5	77	38.5	12	728	PCBP20132C
10	1451	SK32	215	88	15	11.70	5.51	37.76	3	C15 X 33.9#/FT	6X Ø3/4 THRU	5	5	1.5	85	42.5	12	852	PCBP20132C
11	1451	SK42	256	95	15	11.70	5.51	37.76	3	C15 X 33.9#/FT	6X Ø3/4 THRU	5	5	1.5	92	46	12	1099	PCBP20132C
12	2701	SK42	215	101	18	13.04	6.69	45.75	3	MC18 X 42.7#/FT	6X Ø3/4 THRU	6	6	1.5	98	46	15	1338	PCBP20132D
13	2701	SK52	256	106	18	13.04	6.69	45.75	3	MC18 X 42.7#/FT	6X Ø3/4 THRU	6	6	1.5	103	51.5	15	1430	PCBP20132D
14	2701	SK52	286	108	18	13.04	6.69	45.75	3	MC18 X 42.7#/FT	6X Ø3/4 THRU	6	6	1.5	105	52.5	15	1647	PCBP20132D
15	5001	SK42	213	114	18	14.81	7.87	55.08	3	MC18 X 42.7#/FT	6X Ø3/4 THRU	8	8	1.5	111	55.5	15	1608	PCBP20132D
16	5001	SK52	256	119	18	14.81	7.87	55.08	3	MC18 X 42.7#/FT	6X Ø3/4 THRU	8	8	1.5	116	58	15	1778	PCBP20132D
17	5001	SK62	286	128	18	14.81	7.87	55.08	3	MC18 X 42.7#/FT	6X Ø3/4 THRU	8	8	1.5	125	62.5	15	2116	PCBP20132D
18	5001	SK62	324	128	18	14.81	7.87	55.08	3	MC18 X 42.7#/FT	6X Ø3/4 THRU	8	8	1.5	125	62.5	15	2400	PCBP20132D
19	1001	SK32	215	84	15	11.7	5.51	33.62	3	C15 X 33.9#/FT	6X Ø3/4 THRU	5	5	1.5	81	40.5	12	837	PCBP20132C
20	551	SK22	184	71	12	10.45	4.80	27.09	3	C12 X 20.7#/FT	6X Ø3/4 THRU	4	4	1.5	68	34	9	528	PCBP20132B
21	551	SK32	184	73	12	10.45	4.80	27.09	3	C12 X 20.7#/FT	6X Ø3/4 THRU	4	4	1.5	70	35	9	550	PCBP20132B
22	551	SK32	215	75	15	10.91	4.80	27.09	3	C15 X 33.9#/FT	6X Ø3/4 THRU	4	4	1.5	72	36	12	722	PCBP20132C
23	551	SK42	184	75	15	10.91	4.80	27.09	3	C15 X 33.9#/FT	6X Ø3/4 THRU	4	4	1.5	72	36	12	722	PCBP20132C

NOTE:
1. ALL DIMENSIONS ±1/4

DRAWN	JMB	1-16-01	 Imo Pump 1710 Airport Road PO Box 5020 Monroe, NC USA 28111.5020
CHECKED	JMB	3-13-01	
APPROVED	JMB	3-13-01	
PROCESS	METHODS		
COMMENTS: SUCTION STRAINER AND DISCHARGE RELIEF VALVE MUST BE PROVIDED. ALIGNMENT: UNITS ARE ACCURATELY ALIGNED AT THE FACTORY. ALIGNMENT SHOULD BE CHECKED BEFORE STARTING TO INSURE THAT IT IS STILL WITHIN .005 (0.13) F.I.W. PRESTARTING: FLUSH SUCTION PIPING BEFORE CONNECTING PUMP. PRIME AND VENT PUMP. READ INSTRUCTION MANUAL FOR DETAILS BEFORE STARTING.			TITLE OUTLINE STANDARD TECFLOW
THIRD ANGLE PROJECTION	FIRST ORDER	SIZE	CAGE CODE
USED ON		D	59180
		DWG NO	SDD20132
		SCALE	1/4
		WEIGHT	
		SHEET	1 OF 1