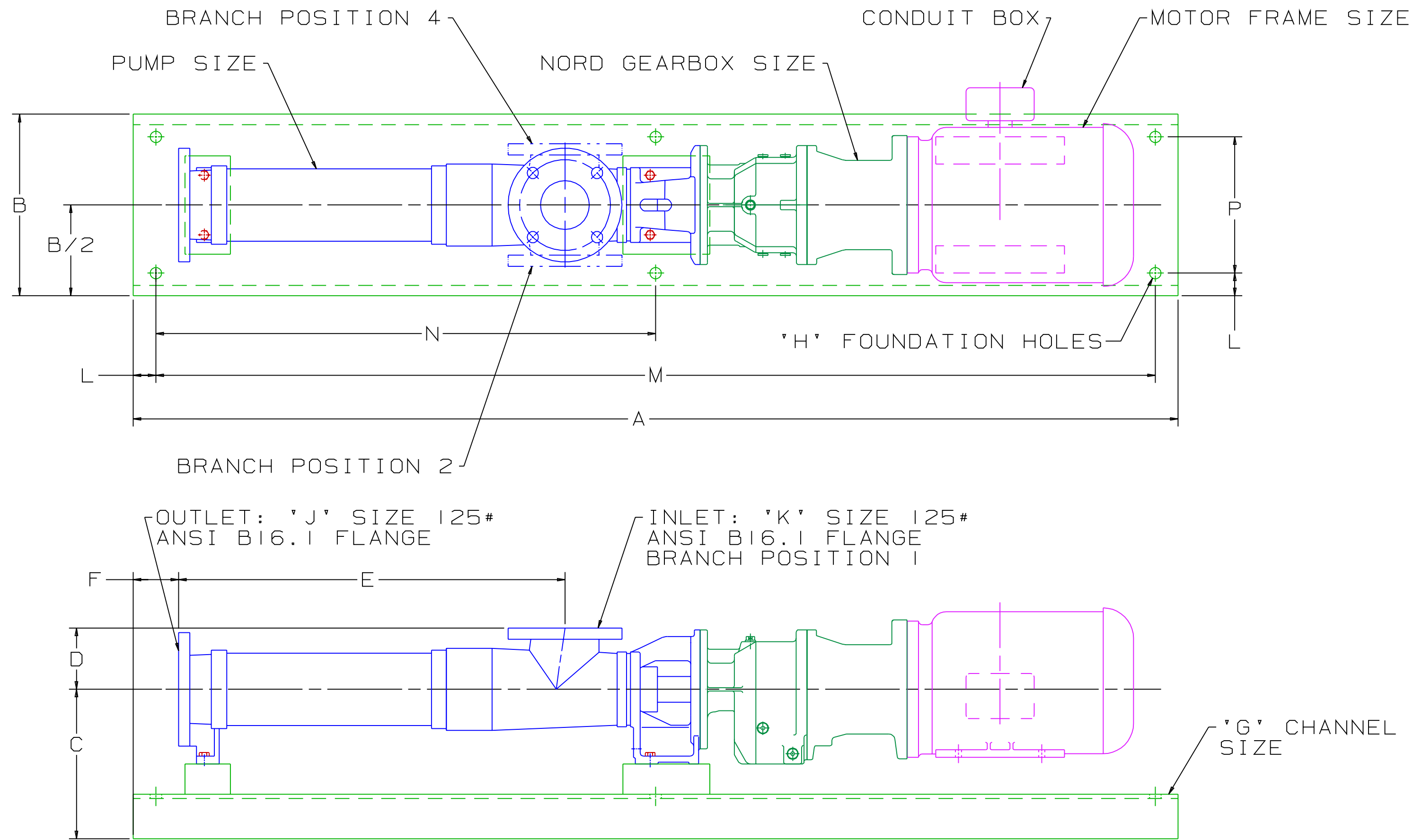


THIS DOCUMENT IS THE SOLE PROPERTY OF IMO PUMP AND IS FURNISHED SUBJECT TO RESTRICTIONS OF DISCLOSURE. DIMENSIONS AND TOLERANCES ARE PROPRIETARY TO IMO PUMP. THIS DRAWING IS NOT TO BE USED FOR ANY PURPOSE WITHOUT THE EXPRESS WRITTEN PERMISSION OF IMO PUMP.

REVISION HISTORY					
CHG NO	ZONE	REV	DESCRIPTION	DATE	BY / APPROVED
08-0076	ALL	3	2.5 WAS 3 FOR 'J' AND 'K' ON ITEMS 4, 5, AND 6	2-13-08	DMM / DMM
			ADDED ITEM 39 ON SHEET 2 OF 2 FOR EMO N45254		



DRAWING CERTIFICATION	
CUSTOMER NAME	-----
CUSTOMER PO NUMBER	-----
CUSTOMER PART NUMBER	---
PUMP DATA	
PUMP TYPE	-----
ITEM NUMBER	-----
PUMP SHAFT ROTATION	----
INLET POSITION	-----
GEAR BOX DATA	
GEAR BOX MODEL NO.	-----
OUTPUT SHAFT SPEED	-----
MOTOR DATA	
MOTOR MANUFACTURER	-----
MOTOR TYPE	-----
FRAME SIZE	-----
POWER	-----
SYNCHRONOUS SPEED	-----
PHASE(S)	-----
FREQUENCY	-----
VOLTAGE	-----
MOTOR INSTALLED BY	-----
DIMENSIONS MAY VARY WITH TYPE AND MAKE OF DRIVER AND COUPLING.	
OTHER INFORMATION	
CERTIFIED BY	-----
CERTIFICATION DATE	-----
IMO ORDER NUMBER	-----
CERTIFICATION REV. NO.	-

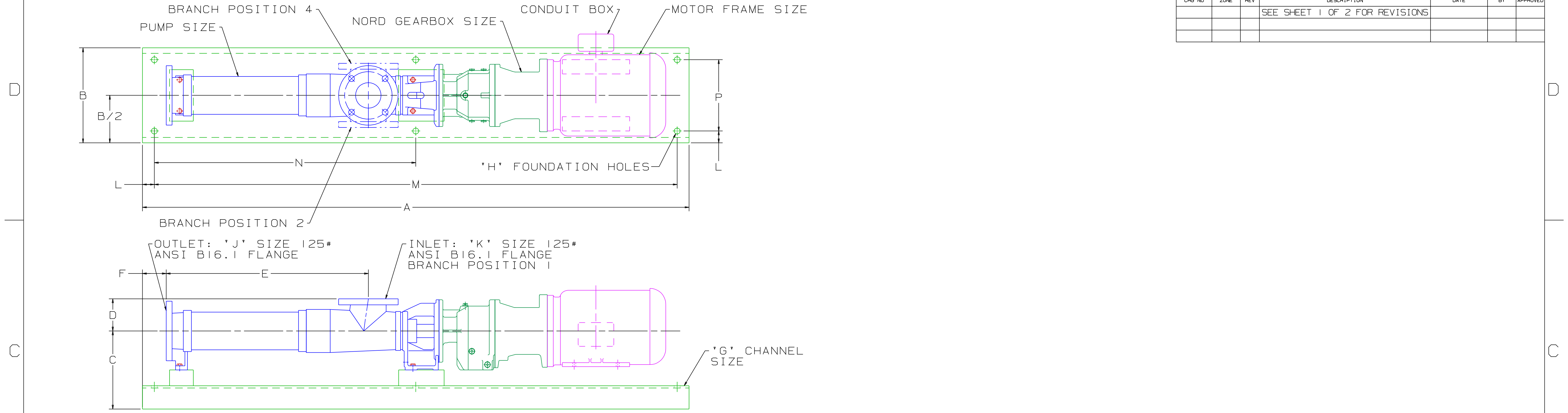
ITEM NO	PUMP	GEARBOX SIZE	MOTOR FRAME	A	B	C	D	E	F	G	H	J	K	L	M	N	P	WT (LBS)	BEDPLATE GROUP NO
1	AEB IE 50	SK02	56C	49	10	8.14	3.35	14.52	3	C10 X 15.3#/FT	4X Ø3/4 THRU	2	2	1.5	46	---	7	227	PCBP20204A
2	AEB IE 50	SK02	145TC	49	10	8.14	3.35	14.52	3	C10 X 15.3#/FT	4X Ø3/4 THRU	2	2	1.5	46	---	7	265	PCBP20204A
3	AEB IE 50	SK12	145TC	49	10	8.14	3.35	14.52	3	C10 X 15.3#/FT	4X Ø3/4 THRU	2	2	1.5	46	---	7	265	PCBP20204A
4	AEB IE 100	SK02	145TC	52.5	10	8.54	3.54	17.4	3	C10 X 15.3#/FT	4X Ø3/4 THRU	2.5	2.5	1.5	49.5	---	7	298	PCBP20204A
5	AEB IE 100	SK12	145TC	52.5	10	8.54	3.54	17.4	3	C10 X 15.3#/FT	4X Ø3/4 THRU	2.5	2.5	1.5	49.5	---	7	308	PCBP20204A
6	AEB IE 100	SK12	184TC	57	12	8.88	3.54	17.4	3	C12 X 20.7#/FT	4X Ø3/4 THRU	2.5	2.5	1.5	54	---	9	383	PCBP20204B
7	AEB IE 200	SK22	145TC	60	10	9.4	4.13	21.54	3	C10 X 15.3#/FT	6X Ø3/4 THRU	3	3	1.5	57	25.5	7	366	PCBP20204A
8	AEB IE 200	SK22	184TC	65	12	9.75	4.13	21.54	3	C12 X 20.7#/FT	6X Ø3/4 THRU	3	3	1.5	62	33.5	9	447	PCBP20204B
9	AEB IE 200	SK32	145TC	61.5	10	9.4	4.13	21.54	3	C10 X 15.3#/FT	6X Ø3/4 THRU	3	3	1.5	58.5	34	7	410	PCBP20204A
10	AEB IE 200	SK32	184TC	66.5	12	9.75	4.13	21.54	3	C12 X 20.7#/FT	6X Ø3/4 THRU	3	3	1.5	63.5	33.5	9	488	PCBP20204B
11	AEB IE 200	SK32	215TC	68	15	10.2	4.13	21.54	3	C15 X 33.9#/FT	6X Ø3/4 THRU	3	3	1.5	65	32.5	12	631	PCBP20204C
12	AEB IE 380	SK22	184TC	70	12	10.45	4.72	25.51	3	C12 X 20.7#/FT	6X Ø3/4 THRU	4	4	1.5	67	30.5	9	489	PCBP20204B
13	AEB IE 380	SK32	184TC	71.5	12	10.45	4.72	25.51	3	C12 X 20.7#/FT	6X Ø3/4 THRU	4	4	1.5	68.5	30.5	9	529	PCBP20204B
14	AEB IE 380	SK32	215TC	74	15	10.91	4.72	25.51	3	C15 X 33.9#/FT	6X Ø3/4 THRU	4	4	1.5	71	35.5	12	811	PCBP20204C
15	AEB IE 380	SK42	184TC	74.5	12	10.45	4.72	25.51	3	C12 X 20.7#/FT	6X Ø3/4 THRU	4	4	1.5	71.5	30.5	9	583	PCBP20204B
16	AEB IE 380	SK42	215TC	77	15	10.91	4.72	25.51	3	C15 X 33.9#/FT	6X Ø3/4 THRU	4	4	1.5	74	37	12	885	PCBP20204C
17	AEB IE 380	SK42	256TC	80.5	15	10.91	4.72	25.51	3	C15 X 33.9#/FT	6X Ø3/4 THRU	4	4	1.5	77.5	38.75	12	935	PCBP20204C

NOTES:  
 1. ALL DIMENSIONS ARE IN INCHES.  
 2. ALL DIMENSIONS ±1/4.

DRAWN	JMB	7-25-01		Imo Pump 1710 Airport Road PO Box 5020 Monroe, NC USA 28111.5020	
CHECKED	JMB	7-25-01			
APPROVED	JMB	7-25-01			
MATERIAL				TITLE	STANDARD UNIT OUTLINE AEB IE
PROCESS				SIZE	D
COMMENTS:	SUCTION STRAINER AND DISCHARGE RELIEF VALVE MUST BE PROVIDED. ALIGNMENT UNITS ARE ACCURATELY ALIGNED AT THE FACTORY. ALIGNMENT SHOULD BE CHECKED BEFORE STARTING TO INSURE THAT IT IS STILL WITHIN .005 (0.13) F.I.M. PRESTARTING: FLUSH SUCTION PIPING BEFORE CONNECTING PUMP. PRIME AND VENT PUMP. READ INSTRUCTION MANUAL FOR DETAILS BEFORE STARTING.			SCALE	NTS
	THIRD ANGLE PROJECTION	FIRST ORDER	71000-124-310	CAGE CODE	59180
				DWG NO	SDD20204
				WEIGHT	SEE TABLE
				SHEET	1 OF 2

THIS DOCUMENT IS THE SOLE PROPERTY OF IMO PUMP AND IS FURNISHED SUBJECT TO RESTRICTIONS OF DISCLOSURE. DIMENSIONS AND TOLERANCES ARE PROPRIETARY TO IMO PUMP. THIS DRAWING IS NOT TO BE USED FOR ANY PURPOSE WITHOUT THE EXPRESS WRITTEN PERMISSION OF IMO PUMP.

REVISION HISTORY						
CHG NO	ZONE	REV	DESCRIPTION	DATE	BY	APPROVED
			SEE SHEET 1 OF 2 FOR REVISIONS			



ITEM NO	PUMP	GEARBOX SIZE	MOTOR FRAME	A	B	C	D	E	F	G	H	J	K	L	M	N	P	WT (LBS)	BEDPLATE GROUP NO
18	AEB IE 550	SK22	184TC	76	12	10.45	4.72	31.57	3	C12 X 20.7#/FT	6X Ø3/4 THRU	4	4	1.5	73	36.5	9	514	PCBP20204B
19	AEB IE 550	SK32	215TC	80	15	10.91	4.72	31.57	3	C15 X 33.9#/FT	6X Ø3/4 THRU	4	4	1.5	77	38.5	12	849	PCBP20204C
20	AEB IE 550	SK42	215TC	83	15	10.91	4.72	31.57	3	C15 X 33.9#/FT	6X Ø3/4 THRU	4	4	1.5	80	40	12	922	PCBP20204C
21	AEB IE 550	SK42	256TC	86.5	15	10.91	4.72	31.57	3	C15 X 33.9#/FT	6X Ø3/4 THRU	4	4	1.5	83.5	41.75	12	973	PCBP20204C
22	AEB IE 750	SK32	184TC	79.5	15	11.7	5.52	31.5	3	C15 X 33.9#/FT	6X Ø3/4 THRU	5	5	1.5	76.5	37.75	12	755	PCBP20204C
23	AEB IE 750	SK32	215TC	82	15	11.7	5.52	31.5	3	C15 X 33.9#/FT	6X Ø3/4 THRU	5	5	1.5	79	37.75	12	926	PCBP20204C
24	AEB IE 750	SK42	215TC	85	15	11.7	5.52	31.5	3	C15 X 33.9#/FT	6X Ø3/4 THRU	5	5	1.5	82	37.75	12	1001	PCBP20204C
25	AEB IE 750	SK42	256TC	88.5	15	11.7	5.52	31.5	3	C15 X 33.9#/FT	6X Ø3/4 THRU	5	5	1.5	85.5	37.75	12	1100	PCBP20204C
26	AEB IE 1000	SK32	184TC	84	15	11.7	5.52	35.9	3	C15 X 33.9#/FT	6X Ø3/4 THRU	5	5	1.5	81	40.5	12	789	PCBP20204C
27	AEB IE 1000	SK32	215TC	86.5	15	11.7	5.52	35.9	3	C15 X 33.9#/FT	6X Ø3/4 THRU	5	5	1.5	83.5	41.75	12	960	PCBP20204C
28	AEB IE 1000	SK42	215TC	89.5	15	11.7	5.52	35.9	3	C15 X 33.9#/FT	6X Ø3/4 THRU	5	5	1.5	86.5	41.75	12	1036	PCBP20204C
29	AEB IE 1000	SK42	256TC	93	15	11.7	5.52	35.9	3	C15 X 33.9#/FT	6X Ø3/4 THRU	5	5	1.5	90	41.75	12	1135	PCBP20204C
30	AEB IE 1450	SK42	256TC	98	15	12.49	6.7	39.65	3	C15 X 33.9#/FT	6X Ø3/4 THRU	6	6	1.5	95	46.5	12	1365	PCBP20204E
31	AEB IE 1450	SK52	256TC	99.5	15	12.49	6.7	39.65	3	C15 X 33.9#/FT	6X Ø3/4 THRU	6	6	1.5	96.5	46.5	12	1375	PCBP20204E
32	AEB IE 1450	SK52	286TC	103	18	13.04	6.7	39.65	3	C18 X 42.7#/FT	6X Ø3/4 THRU	6	6	1.5	100	46.5	15	1633	PCBP20204D
33	AEB IE 2700	SK42	256TC	109	15	14.26	7.87	47.36	3	C15 X 33.9#/FT	6X Ø3/4 THRU	8	8	1.5	106	53	12	1560	PCBP20204E
34	AEB IE 2700	SK52	256TC	111	15	14.26	7.87	47.36	3	C15 X 33.9#/FT	6X Ø3/4 THRU	8	8	1.5	108	53.75	12	1569	PCBP20204E
35	AEB IE 2700	SK52	286TC	115	18	14.8	7.87	47.36	3	C18 X 42.7#/FT	6X Ø3/4 THRU	8	8	1.5	112	56	15	1913	PCBP20204D
36	AEB IE 2700	SK62	256TC	118	15	14.26	7.87	47.36	3	C15 X 33.9#/FT	6X Ø3/4 THRU	8	8	1.5	115	56	12	1776	PCBP20204E
37	AEB IE 2700	SK62	286TC	120	18	14.8	7.87	47.36	3	C18 X 42.7#/FT	6X Ø3/4 THRU	8	8	1.5	117	56	15	2038	PCBP20204D
38	AEB IE 2700	SK62	326TC	121	18	14.8	7.87	47.36	3	C18 X 42.7#/FT	6X Ø3/4 THRU	8	8	1.5	118	56	15	2293	PCBP20204D
39	AEB IE 100	SK22	184TC	58.5	12	8.88	3.54	17.4	3	C12 X 20.7#/FT	4X Ø3/4 THRU	2.5	2.5	1.5	55.5	---	9	405	PCBP20204B

DRAWN	JMB	7-25-01	<p>Imo Pump 1710 Airport Road PO Box 5020 Monroe, NC USA 28111.5020</p>	
CHECKED	JMB	7-25-01		
APPD	JMB	7-25-01		
PROCESS	METHODS			
<p>COMMENTS: SUCTION STRAINER AND DISCHARGE RELIEF VALVE MUST BE PROVIDED. ALIGNMENT: UNITS ARE ACCURATELY ALIGNED AT THE FACTORY. ALIGNMENT SHOULD BE CHECKED BEFORE STARTING TO INSURE THAT IT IS STILL WITHIN .005 (0.13) F.I.W. PRESTARTING: FLUSH SUCTION PIPING BEFORE CONNECTING PUMP. PRIME AND VENT PUMP. READ INSTRUCTION MANUAL FOR DETAILS BEFORE STARTING.</p>			<p>TITLE STANDARD UNIT OUTLINE AEB IE</p>	
THIRD ANGLE PROJECTION	FIRST ORDER	SIZE	CAGE CODE	DWG NO
	71000-124-310	D	59180	SDD20204
SCALE	NTS	WEIGHT	SEE TABLE	SHEET 2 OF 2