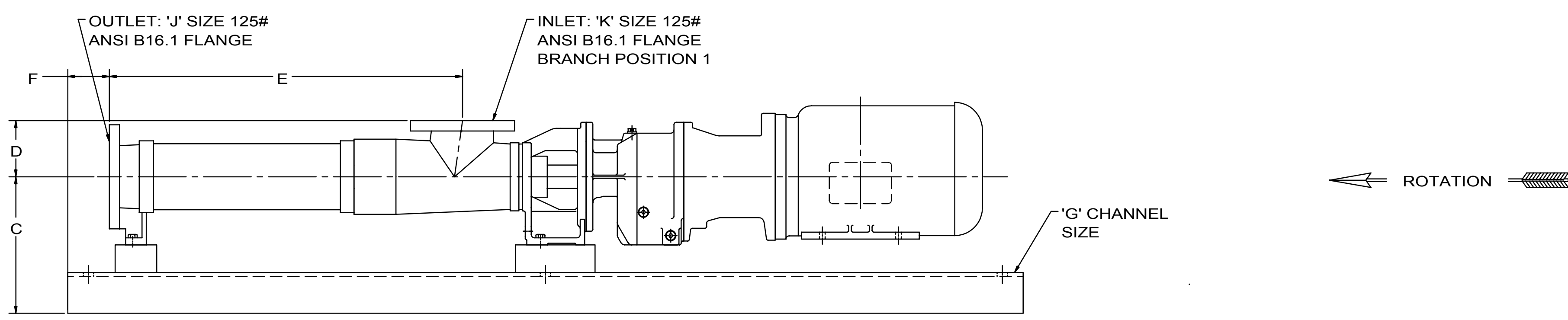
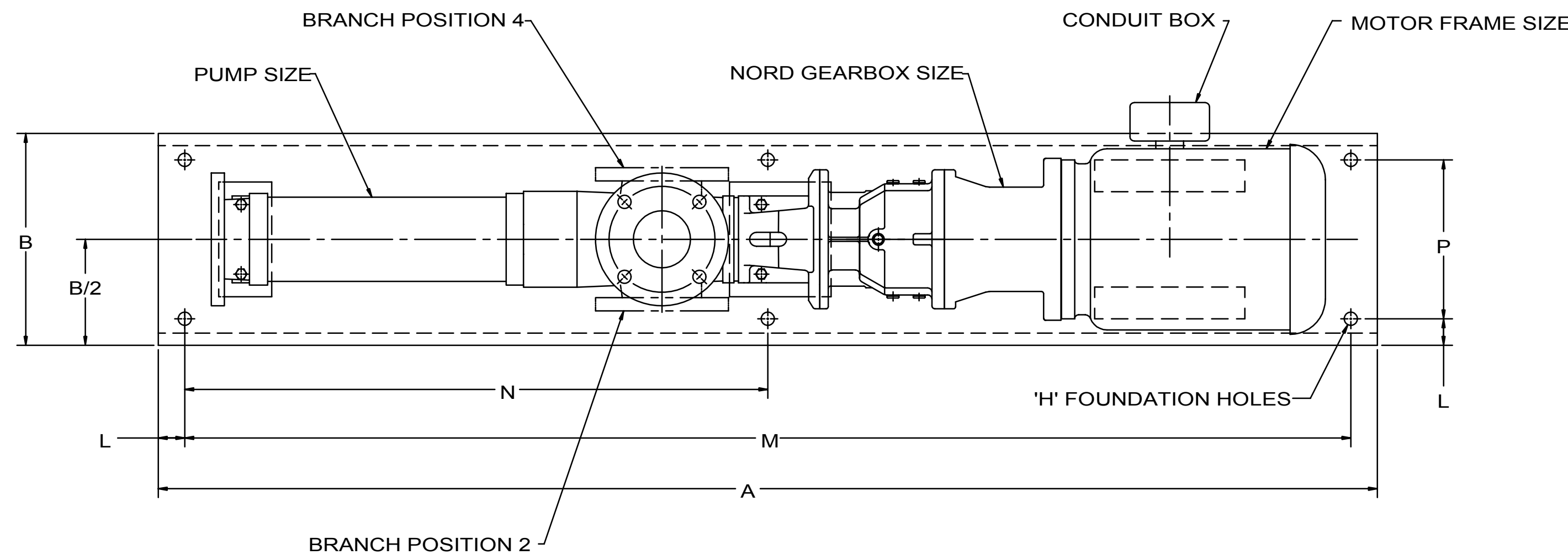


REVISION HISTORY					
CHG NO	ZONE	REV	DESCRIPTION	DATE	BY / APPROVED
11-0291	B4	02	"J" & "K" DIMS FOR ITEMS 4, 5, 6 WAS 3	7-22-11	ERH / ERH



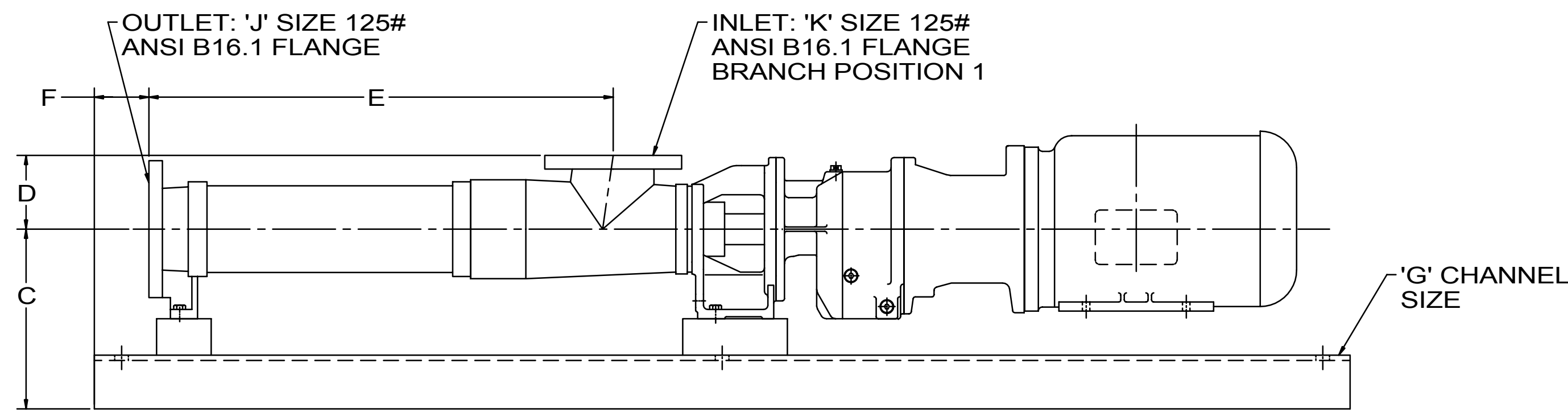
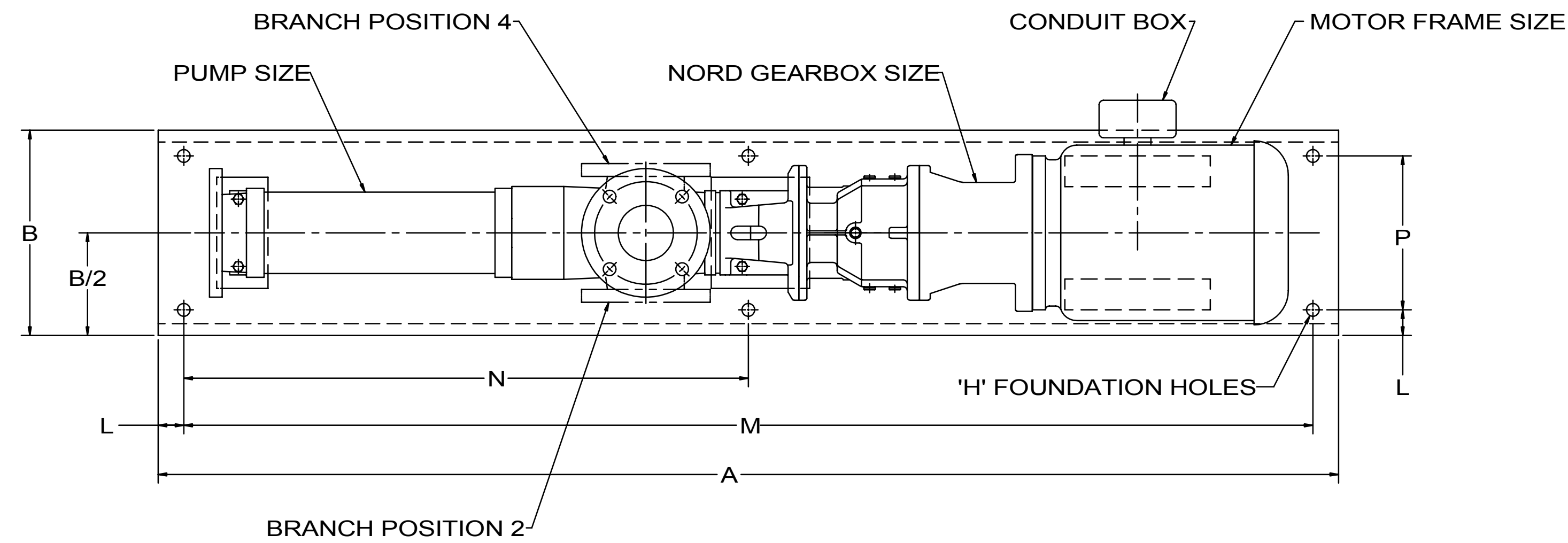
DRAWING CERTIFICATION	
CUSTOMER NAME -----	
CUSTOMER PO NUMBER -----	
CUSTOMER PART NUMBER -----	
PUMP DATA	
PUMP TYPE -----	
ITEM NUMBER -----	
PUMP SHAFT ROTATION ----	
INLET POSITION -----	
GEAR BOX DATA	
GEAR BOX MODEL NO. ----	
OUTPUT SHAFT SPEED ----	
MOTOR DATA	
MOTOR MANUFACTURER ----	
MOTOR TYPE -----	
FRAME SIZE -----	
POWER -----	
SYNCHRONOUS SPEED ----	
PHASE(S) -----	
FREQUENCY -----	
VOLTAGE -----	
MOTOR INSTALLED BY ----	
DIMENSIONS MAY VARY WITH TYPE AND MAKE OF DRIVER AND COUPLING.	
OTHER INFORMATION	
CERTIFIED BY -----	
CERTIFICATION DATE -----	
IMO ORDER NUMBER -----	
CERTIFICATION REV. NO. -	

ITEM NO	PUMP	GEARBOX SIZE	MOTOR FRAME	A	B	C	D	E	F	G	H	J	K	L	M	N	P	WT (LBS)	BEDPLATE GROUP NO
1	AEB 2E 50	SK02	56C	55	10	8.14	3.35	20.83	3	C10 X 15.3#/FT	4X Ø3/4 THRU	2	2	1.5	52	---	7	248	PCBP20205A
2	AEB 2E 50	SK02	145TC	55	10	8.14	3.35	20.83	3	C10 X 15.3#/FT	4X Ø3/4 THRU	2	2	1.5	52	---	7	266	PCBP20205A
3	AEB 2E 50	SK12	145TC	55	10	8.14	3.35	20.83	3	C10 X 15.3#/FT	4X Ø3/4 THRU	2	2	1.5	52	---	7	276	PCBP20205A
4	AEB 2E 100	SK02	145TC	59	10	8.54	3.54	23.7	3	C10 X 15.3#/FT	4X Ø3/4 THRU	2-1/2	2-1/2	1.5	56	---	7	306	PCBP20205A
5	AEB 2E 100	SK12	145TC	59	10	8.54	3.54	23.7	3	C10 X 15.3#/FT	4X Ø3/4 THRU	2-1/2	2-1/2	1.5	56	---	7	310	PCBP20205A
6	AEB 2E 100	SK12	184TC	63	12	8.88	3.54	23.7	3	C12 X 20.7#/FT	6X Ø3/4 THRU	2-1/2	2-1/2	1.5	60	30	9	397	PCBP20205B
7	AEB 2E 200	SK22	184TC	75	12	9.75	4.13	31.46	3	C12 X 20.7#/FT	6X Ø3/4 THRU	3	3	1.5	72	36	9	487	PCBP20205B
8	AEB 2E 200	SK32	184TC	76.5	12	9.75	4.13	31.46	3	C12 X 20.7#/FT	6X Ø3/4 THRU	3	3	1.5	73.5	36	9	528	PCBP20205B
9	AEB 2E 200	SK32	215TC	78	15	10.2	4.13	31.46	3	C15 X 33.9#/FT	6X Ø3/4 THRU	3	3	1.5	75	37.5	12	774	PCBP20205C


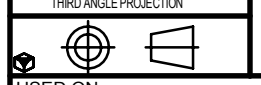
NOTES:
 1. ALL DIMENSIONS ARE IN INCHES.
 2. ALL DIMENSIONS ± 1/4.

DRAWN	JMB	7-25-01	 Imo Pump 1710 Airport Road PO Box 5020 Monroe, NC USA 28111.5020
CHECKED	JMB	7-25-01	
APPROVED	APPD	JMB	
COMMENTS: SUCTION STRAINER AND DISCHARGE RELIEF VALVE MUST BE PROVIDED. ALIGNMENT: UNITS ARE ACCURATELY ALIGNED AT THE FACTORY. ALIGNMENT SHOULD BE CHECKED BEFORE STARTING TO ENSURE THAT IT IS STILL WITHIN .005 (0.031 MM) PRE-STARTING. FLUSH SUCTION PIPING BEFORE CONNECTING PUMP. PRIME AND VENT PUMP. READ INSTRUCTION MANUAL FOR DETAILS BEFORE STARTING.			TITLE OUTLINE STANDARD UNIT AEB 2E
UNLESS OTHERWISE SPECIFIED ASME Y14.5M-1994.			FIRST ORDER 71000-124-310
THIS WELDED CONNECTION 			SIZE D
USED ON			CAGE CODE 59180
SCALE NTS			DWG NO SDD20205
WEIGHT SEE TABLE			SHEET 1 OF 2

REVISION HISTORY						
CHG NO	ZONE	REV	DESCRIPTION	DATE	BY	APPROVED
			SEE SHEET 1 OF 2 FOR REVISIONS			



ITEM NO	PUMP	GEARBOX SIZE	MOTOR FRAME SIZE	A	B	C	D	E	F	G	H	J	K	L	M	N	P	WT (LBS)	BEDPLATE GROUP NO
10	AEB 2E 380	SK22	184TC	82	12	10.45	4.72	37.56	3	C12 X 20.7#/FT	6X Ø3/4 THRU	4	4	1.5	79	39.5	9	553	PCBP20205B
11	AEB 2E 380	SK32	184TC	83.5	12	10.45	4.72	37.56	3	C12 X 20.7#/FT	6X Ø3/4 THRU	4	4	1.5	80.5	40.25	9	593	PCBP20205B
12	AEB 2E 380	SK32	215TC	86	15	10.91	4.72	37.56	3	C15 X 33.9#/FT	6X Ø3/4 THRU	4	4	1.5	83	41.5	12	888	PCBP20205C
13	AEB 2E 380	SK42	184TC	86.5	12	10.45	4.72	37.56	3	C12 X 20.7#/FT	6X Ø3/4 THRU	4	4	1.5	83.5	41.75	9	647	PCBP20205B
14	AEB 2E 380	SK42	215TC	89	15	10.91	4.72	37.56	3	C15 X 33.9#/FT	6X Ø3/4 THRU	4	4	1.5	86	43	12	968	PCBP20205C
15	AEB 2E 380	SK42	256TC	92.5	15	10.91	4.72	37.56	3	C15 X 33.9#/FT	6X Ø3/4 THRU	4	4	1.5	89.5	44.75	12	1018	PCBP20205C
16	AEB 2E 750	SK32	184TC	95	15	11.7	5.52	47.24	3	C15 X 33.9#/FT	6X Ø3/4 THRU	5	5	1.5	92	46	12	875	PCBP20205C
17	AEB 2E 750	SK32	215TC	97.5	15	11.7	5.52	47.24	3	C15 X 33.9#/FT	6X Ø3/4 THRU	5	5	1.5	94.5	47.25	12	1052	PCBP20205E
18	AEB 2E 750	SK42	215TC	100.5	15	11.7	5.52	47.24	3	C15 X 33.9#/FT	6X Ø3/4 THRU	5	5	1.5	97.5	48.75	12	1127	PCBP20205E
19	AEB 2E 750	SK42	256TC	104	15	11.7	5.52	47.24	3	C15 X 33.9#/FT	6X Ø3/4 THRU	5	5	1.5	101	50.5	12	1226	PCBP20205E
20	AEB 2E 1450	SK42	256TC	118	15	12.49	6.7	59.53	3	C15 X 33.9#/FT	6X Ø3/4 THRU	6	6	1.5	115	57.5	12	1573	PCBP20205E
21	AEB 2E 1450	SK52	256TC	119.5	15	12.49	6.7	59.53	3	C15 X 33.9#/FT	6X Ø3/4 THRU	6	6	1.5	116.5	58.25	12	1511	PCBP20205E
22	AEB 2E 1450	SK52	286TC	123	18	13.04	6.7	59.53	3	C18 X 42.7#/FT	6X Ø3/4 THRU	6	6	1.5	120	60	15	1901	PCBP20205D
23	AEB 2E 2700	SK42	256TC	135	15	14.26	7.87	73.27	3	C15 X 33.9#/FT	6X Ø3/4 THRU	8	8	1.5	132	66	12	1891	PCBP20205E
24	AEB 2E 2700	SK52	256TC	136.5	15	14.26	7.87	73.27	3	C15 X 33.9#/FT	6X Ø3/4 THRU	8	8	1.5	133.5	66.75	12	1900	PCBP20205E
25	AEB 2E 2700	SK52	286TC	141	18	14.8	7.87	73.27	3	C18 X 42.7#/FT	6X Ø3/4 THRU	8	8	1.5	138	69	15	2264	PCBP20205F
26	AEB 2E 2700	SK62	256TC	144	15	14.26	7.87	73.27	3	C15 X 33.9#/FT	6X Ø3/4 THRU	8	8	1.5	141	70.5	12	2107	PCBP20205F
27	AEB 2E 2700	SK62	286TC	146	18	14.8	7.87	73.27	3	C18 X 42.7#/FT	6X Ø3/4 THRU	8	8	1.5	143	71.5	15	2389	PCBP20205F
28	AEB 2E 2700	SK62	326TC	147	18	14.8	7.87	73.27	3	C18 X 42.7#/FT	6X Ø3/4 THRU	8	8	1.5	144	72	15	2644	PCBP20205F

DRAWN	JMB	7-25-01	 Imo Pump 1710 Airport Road PO Box 5020 Monroe, NC USA 28111.5020		
CHECKED	JMB	7-25-01			
APPD	JMB	7-25-11			
PROCESS					
UNLESS OTHERWISE SPECIFIED ASME Y14.5M-1994 COMMENTS: SUCTION STRAINER AND DISCHARGE RELIEF VALVE MUST BE PROVIDED. ALIGNMENT: UNITS ARE ACCURATELY ALIGNED AT THE FACTORY. ALIGNMENT SHOULD BE CHECKED BEFORE STARTING TO ENSURE THAT IT IS STILL WITHIN .005 (0.025 MM). PRE-STARTING: FLUSH SUCTION PIPING BEFORE CONNECTING PUMP. PRIME AND VENT PUMP. READ INSTRUCTION MANUAL FOR DETAILS BEFORE STARTING.			TITLE OUTLINE STANDARD UNIT AEB 2E		
	FIRST ORDER	71000-124-310	SIZE D	CAGE CODE 59180	DWG NO SDD20205
SCALE	NTS	WEIGHT	SEE TABLE	SHEET	2 OF 2