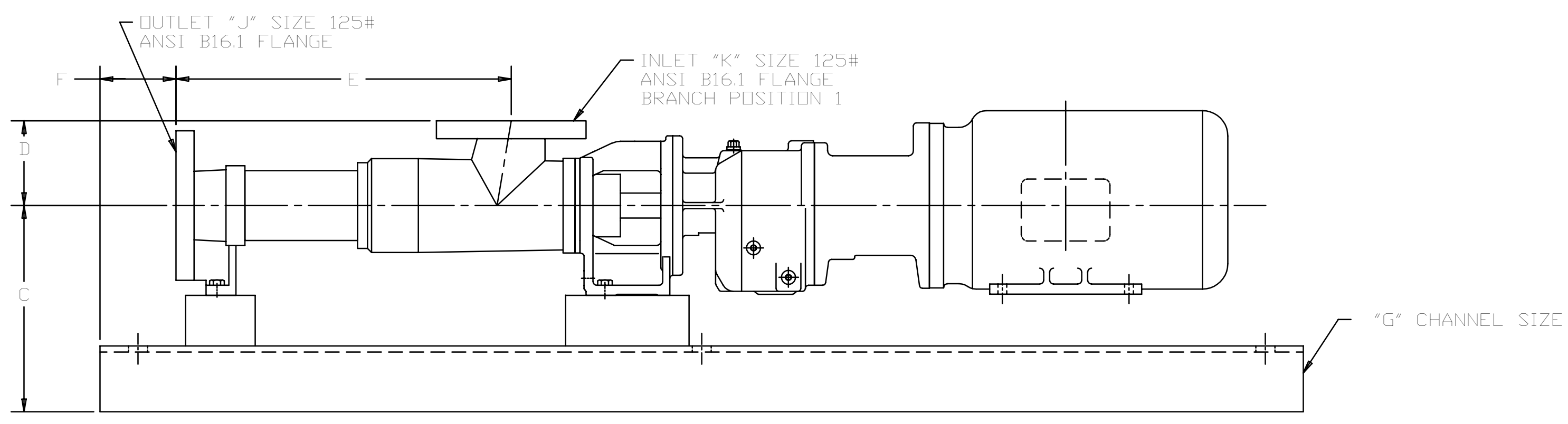
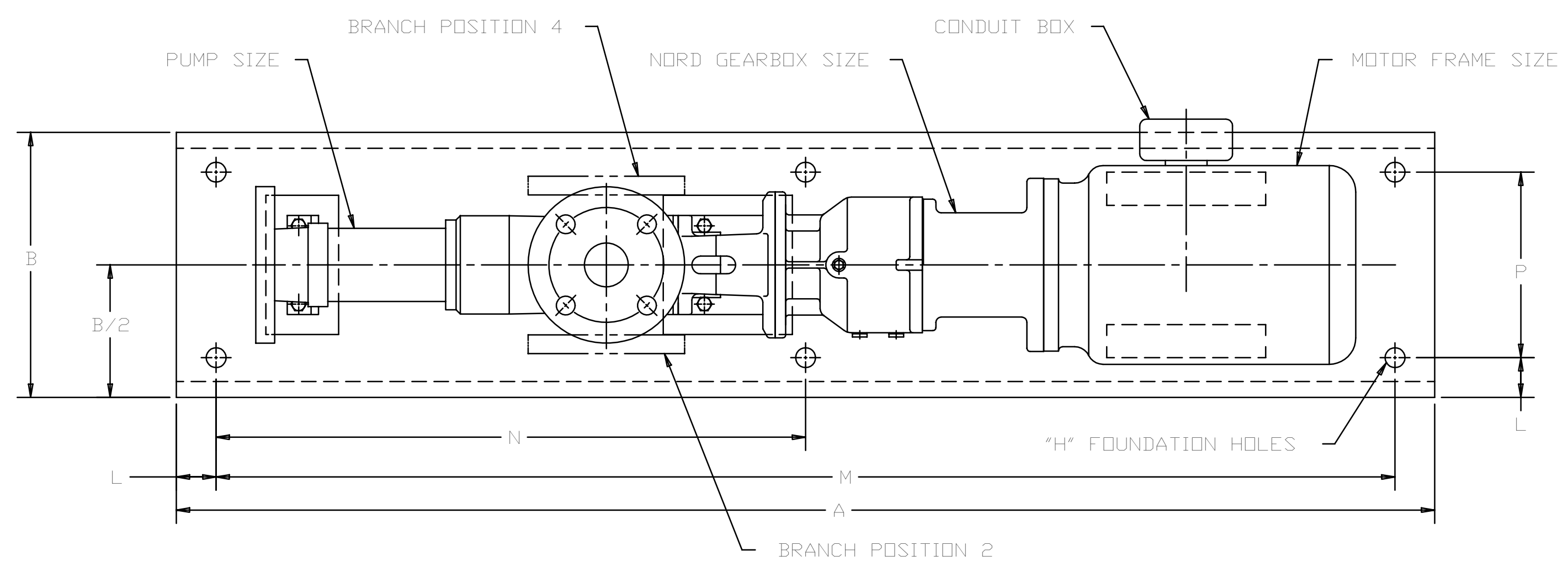


REVISION HISTORY					
CHG NO	ZONE	REV	DESCRIPTION	DATE	BY / APPROVED
10-5003	B4,B5	2	CHANGED "J" (OUTLET) & "K" (INLET) SIZE VALUES ON ITEMS 1,2 & 3 FROM 2 TO 1.5	1-15-10	DMM / DMM



DRAWING CERTIFICATION

CUSTOMER NAME -----

CUSTOMER PO NUMBER -----

CUSTOMER PART NUMBER -----

PUMP DATA

ITEM NUMBER -----

PUMP SIZE -----

SHAFT ROTATION -----

INLET POSITION -----

GEAR BOX DATA

GEAR BOX MODEL NO. -----

SPEED -----

MOTOR DATA

MOTOR -----

FRAME -----

TYPE -----

H.P. -----

RPM -----

PHASE -----

HERTZ -----

VOLTS -----

DRIVER DIMENSIONS MAY VARY
WITH TYPE AND MAKE OF DRIVER.

OTHER INFORMATION

CERTIFIED BY -----

CERTIFIED DATE -----

IMD ORDER NUMBER -----

DATA REVISION NUMBER -----

ITEM NO.	PUMP SIZE	GEARBOX SIZE	MOTOR FRAME	A	B	C	D	E	F	G	H	J	K	L	M	N	P	WEIGHT (LBS)
1	AEB 1N 25	SK02	56C	475	10	8.14	3.35	13.23	3	C10 X 15.3#/FT	4XØ3/4 THRU	1.5	1.5	1.5	44.5	----	7	218
2	AEB 1N 25	SK02	145TC	475	10	8.14	3.35	13.23	3	C10 X 15.3#/FT	4XØ3/4 THRU	1.5	1.5	1.5	44.5	----	7	256
3	AEB 1N 25	SK12	145TC	475	10	8.14	3.35	13.23	3	C10 X 15.3#/FT	4XØ3/4 THRU	1.5	1.5	1.5	44.5	----	7	266
4	AEB 1N 50	SK02	145TC	49	10	8.54	3.39	13.72	3	C10 X 15.3#/FT	4XØ3/4 THRU	2	2	1.5	46	----	7	266
5	AEB 1N 50	SK12	145TC	49	10	8.54	3.39	13.72	3	C10 X 15.3#/FT	4XØ3/4 THRU	2	2	1.5	46	----	7	270
6	AEB 1N 50	SK12	184TC	53	12	8.88	3.39	13.72	3	C12 X 20.7#/FT	4XØ3/4 THRU	2	2	1.5	50	----	9	353
7	AEB 1N 100	SK22	184TC	625	12	9.75	4.09	19.49	3	C12 X 20.7#/FT	6XØ3/4 THRU	3	3	1.5	59.5	31.25	9	430
8	AEB 1N 100	SK32	184TC	64	12	9.75	4.09	19.49	3	C12 X 20.7#/FT	6XØ3/4 THRU	3	3	1.5	61	30.5	9	471
9	AEB 1N 100	SK32	215TC	66	15	10.2	4.09	19.49	3	C15 X 33.9#/FT	6XØ3/4 THRU	3	3	1.5	63	31.5	12	717
10	AEB 1N 200	SK22	184TC	675	12	10.45	4.65	23.46	3	C12 X 20.7#/FT	6XØ3/4 THRU	3	3	1.5	64.5	28	9	503
11	AEB 1N 200	SK32	215TC	715	15	10.91	4.65	23.46	3	C15 X 33.9#/FT	6XØ3/4 THRU	3	3	1.5	68.5	34.25	12	855
12	AEB 1N 200	SK42	215TC	745	15	10.91	4.65	23.46	3	C15 X 33.9#/FT	6XØ3/4 THRU	3	3	1.5	71.5	35.75	12	928
13	AEB 1N 200	SK42	256TC	78	15	10.91	4.65	23.46	3	C15 X 33.9#/FT	6XØ3/4 THRU	3	3	1.5	75	37.5	12	979
14	AEB 1N 380	SK32	184TC	755	15	11.7	5.59	27.8	3	C15 X 33.9#/FT	6XØ3/4 THRU	4	4	1.5	72.5	33.5	12	718
15	AEB 1N 380	SK32	215TC	78	15	11.7	5.59	27.8	3	C15 X 33.9#/FT	6XØ3/4 THRU	4	4	1.5	75	33.5	12	890
16	AEB 1N 380	SK42	215TC	81	15	11.7	5.59	27.8	3	C15 X 33.9#/FT	6XØ3/4 THRU	4	4	1.5	78	42.63	12	964
17	AEB 1N 380	SK42	256TC	845	15	11.7	5.59	27.8	3	C15 X 33.9#/FT	6XØ3/4 THRU	4	4	1.5	81.5	42.63	12	1063
18	AEB 1N 750	SK42	215TC	895	15	12.49	6.7	35.16	3	C15 X 33.9#/FT	6XØ3/4 THRU	5	5	1.5	86.5	41.5	12	1207
19	AEB 1N 750	SK42	256TC	93	15	12.49	6.7	35.16	3	C15 X 33.9#/FT	6XØ3/4 THRU	5	5	1.5	90	41.5	12	1262
20	AEB 1N 750	SK52	215TC	905	15	12.49	6.7	35.16	3	C15 X 33.9#/FT	6XØ3/4 THRU	5	5	1.5	87.5	41.5	12	1169
21	AEB 1N 750	SK52	256TC	94	15	12.49	6.7	35.16	3	C15 X 33.9#/FT	6XØ3/4 THRU	5	5	1.5	91	41.5	12	1203
22	AEB 1N 750	SK52	286TC	98	18	13.04	6.7	35.16	3	C18 X 42.7#/FT	6XØ3/4 THRU	5	5	1.5	95	47.5	15	1531
23	AEB 1N 1450	SK42	256TC	104	15	14.26	7.87	43.39	3	C15 X 33.9#/FT	6XØ3/4 THRU	6	6	1.5	101	50.5	12	1436
24	AEB 1N 1450	SK52	256TC	1055	15	14.26	7.87	43.39	3	C15 X 33.9#/FT	6XØ3/4 THRU	6	6	1.5	102.5	51.25	12	1445
25	AEB 1N 1450	SK52	286TC	110	18	14.8	7.87	43.39	3	C18 X 42.7#/FT	6XØ3/4 THRU	6	6	1.5	107	51	15	1785
26	AEB 1N 1450	SK62	256TC	113	15	14.26	7.87	43.39	3	C15 X 33.9#/FT	6XØ3/4 THRU	6	6	1.5	110	51.5	12	1652
27	AEB 1N 1450	SK62	286TC	115	18	14.8	7.87	43.39	3	C18 X 42.7#/FT	6XØ3/4 THRU	6	6	1.5	112	51.5	15	1910
28	AEB 1N 1450	SK62	326TC	116	18	14.8	7.87	43.39	3	C18 X 42.7#/FT	6XØ3/4 THRU	6	6	1.5	113	51.5	15	2165

NOTE:
1. ALL DIMENSIONS ±1/4".

DRAWN	JMB	7-25-01		1710 Airport Road PO Box 5020 Monroe, NC USA 28111.5020
CHECKED	JMB	7-25-01		
APPD	JMB	7-25-01		
UNLESS OTHERWISE SPECIFIED ANSI Y14.5M-1994			TITLE STANDARD UNIT OUTLINE DRAWING AEB IN	
FIRST ORDER 71000-124-310		SIZE D	CAGE CODE 59180	DWG NO SDD20206
SCALE 1/4		WEIGHT		SHEET OF