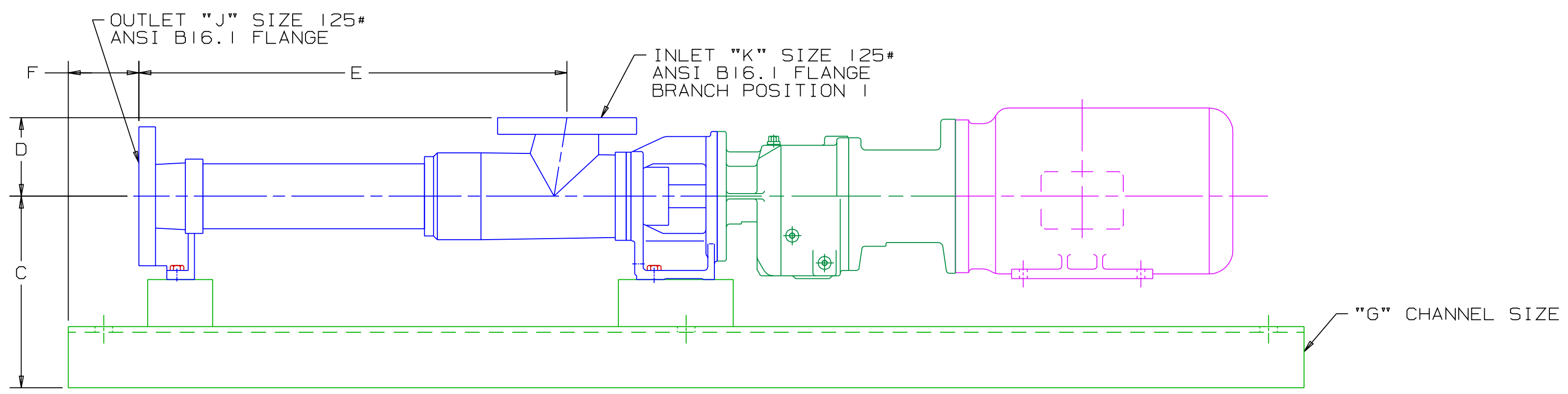
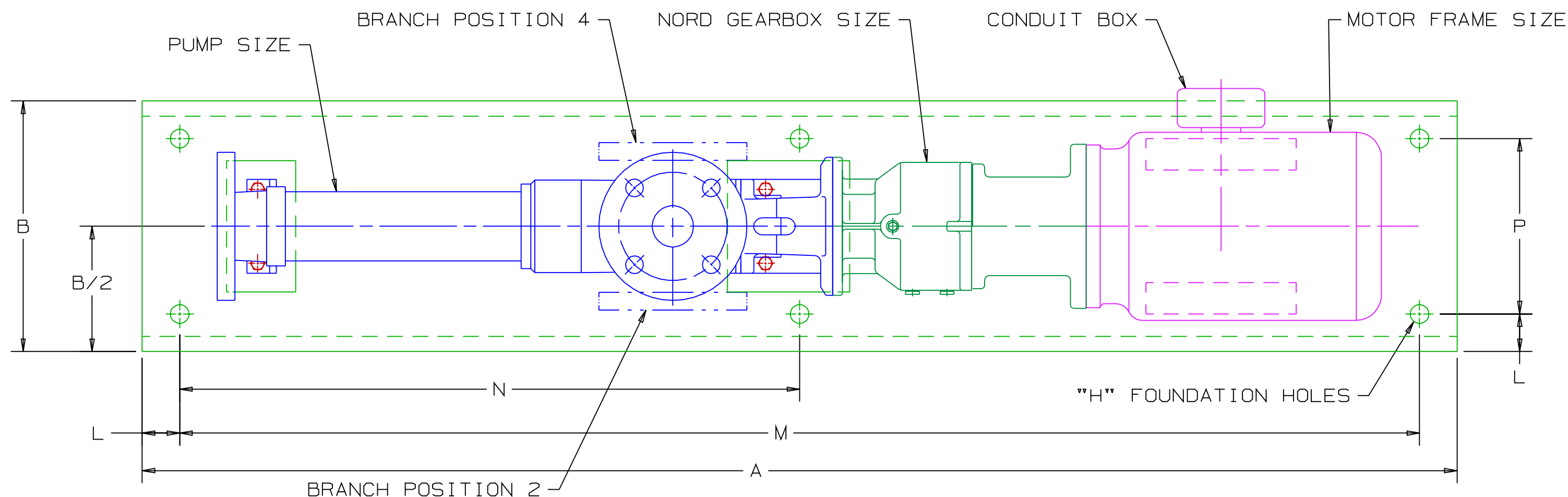


REVISION HISTORY						
CHG NO	ZONE	REV	DESCRIPTION	DATE	BY	APPROVED
05-0131	ALL	01	REDRAWN, REMOVED MOTOR SUPPORT PAD	6-6-05	ERH	MV



**DRAWING CERTIFICATION**

CUSTOMER NAME -----

CUSTOMER PO NUMBER -----

CUSTOMER PART NUMBER -----

**PUMP DATA**

ITEM NUMBER -----

PUMP SIZE -----

SHAFT ROTATION -----

INLET POSITION -----

**GEAR BOX DATA**

GEAR BOX MODEL NO. -----

SPEED -----

**MOTOR DATA**

MOTOR -----

FRAME -----

TYPE -----

H.P. -----

RPM -----

PHASE -----

HERTZ -----

VOLTS -----

DRIVER DIMENSIONS MAY VARY  
WITH TYPE AND MAKE OF DRIVER.

**OTHER INFORMATION**

CERTIFIED BY -----


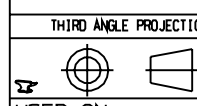
CERTIFIED DATE -----

IMO ORDER NUMBER -----

DATA REVISION NUMBER -----

ITEM NO.	PUMP SIZE	GEARBOX SIZE	MOTOR FRAME	A	B	C	D	E	F	G	H	J	K	L	M	N	P	WEIGHT (LBS)
1	AEB 2N 25	SK02	56C	52.5	10	8.14	3.35	18.19	3	C10 X 15.3#/FT	4X Ø3/4 THRU	2	2	1.5	49.5	----	7	230
2	AEB 2N 25	SK02	145TC	52.5	10	8.14	3.35	18.19	3	C10 X 15.3#/FT	4X Ø3/4 THRU	2	2	1.5	49.5	----	7	268
3	AEB 2N 25	SK12	145TC	52.5	10	8.14	3.35	18.19	3	C10 X 15.3#/FT	4X Ø3/4 THRU	2	2	1.5	49.5	----	7	278
4	AEB 2N 50	SK02	145TC	57	10	8.54	3.39	21.99	3	C10 X 15.3#/FT	4X Ø3/4 THRU	2	2	1.5	54	----	7	283
5	AEB 2N 50	SK12	145TC	57	10	8.54	3.39	21.99	3	C10 X 15.3#/FT	4X Ø3/4 THRU	2	2	1.5	54	----	7	287
6	AEB 2N 50	SK12	184TC	61	12	8.88	3.39	21.99	3	C12 X 20.7#/FT	4X Ø3/4 THRU	2	2	1.5	58	----	9	374
7	AEB 2N 100	SK22	184TC	70.5	12	9.75	4.09	27.36	3	C12 X 20.7#/FT	6X Ø3/4 THRU	3	3	1.5	67.5	31.5	9	461
8	AEB 2N 100	SK32	184TC	72	12	9.75	4.09	27.36	3	C12 X 20.7#/FT	6X Ø3/4 THRU	3	3	1.5	69	31.5	9	501
9	AEB 2N 100	SK32	215TC	74	15	10.2	4.09	27.36	3	C15 X 33.9#/FT	6X Ø3/4 THRU	3	3	1.5	71	35.5	12	757
10	AEB 2N 200	SK22	184TC	77	12	10.45	4.65	33.39	3	C12 X 20.7#/FT	6X Ø3/4 THRU	3	3	1.5	74	36.5	9	547
11	AEB 2N 200	SK32	215TC	81	15	10.91	4.65	33.39	3	C15 X 33.9#/FT	6X Ø3/4 THRU	3	3	1.5	78	39	12	910
12	AEB 2N 200	SK42	215TC	84.5	15	10.91	4.65	33.39	3	C15 X 33.9#/FT	6X Ø3/4 THRU	3	3	1.5	81.5	40.75	12	983
13	AEB 2N 200	SK42	256TC	87.5	15	10.91	4.65	33.39	3	C15 X 33.9#/FT	6X Ø3/4 THRU	3	3	1.5	84.5	42.25	12	1034
14	AEB 2N 380	SK32	184TC	87.5	15	11.7	5.59	39.84	3	C15 X 33.9#/FT	6X Ø3/4 THRU	4	4	1.5	84.5	42.25	12	802
15	AEB 2N 380	SK32	215TC	90	15	11.7	5.59	39.84	3	C15 X 33.9#/FT	6X Ø3/4 THRU	4	4	1.5	87	43.5	12	974
16	AEB 2N 380	SK42	215TC	93	15	11.7	5.59	39.84	3	C15 X 33.9#/FT	6X Ø3/4 THRU	4	4	1.5	90	45	12	1048
17	AEB 2N 380	SK42	256TC	96.5	15	11.7	5.59	39.84	3	C15 X 33.9#/FT	6X Ø3/4 THRU	4	4	1.5	93.5	45	12	1147
18	AEB 2N 750	SK42	215TC	105	15	12.49	6.7	50.91	3	C15 X 33.9#/FT	6X Ø3/4 THRU	5	5	1.5	102	51	12	1267
19	AEB 2N 750	SK42	256TC	108.5	15	12.49	6.7	50.91	3	C15 X 33.9#/FT	6X Ø3/4 THRU	5	5	1.5	105.5	52.75	12	1322
20	AEB 2N 750	SK52	215TC	106.5	15	12.49	6.7	50.91	3	C15 X 33.9#/FT	6X Ø3/4 THRU	5	5	1.5	103.5	51.75	12	1229
21	AEB 2N 750	SK52	256TC	110	15	12.49	6.7	50.91	3	C15 X 33.9#/FT	6X Ø3/4 THRU	5	5	1.5	107	53.5	12	1263
22	AEB 2N 750	SK52	286TC	113.5	18	13.04	6.7	50.91	3	C18 X 42.7#/FT	6X Ø3/4 THRU	5	5	1.5	110.5	55.25	15	1588
23	AEB 2N 1450	SK42	256TC	124	15	14.26	7.87	63.27	3	C15 X 33.9#/FT	6X Ø3/4 THRU	6	6	1.5	121	60.5	12	1740
24	AEB 2N 1450	SK52	256TC	125.5	15	14.26	7.87	63.27	3	C15 X 33.9#/FT	6X Ø3/4 THRU	6	6	1.5	122.5	61.25	12	1749
25	AEB 2N 1450	SK52	286TC	130	18	14.8	7.87	63.27	3	C18 X 42.7#/FT	6X Ø3/4 THRU	6	6	1.5	127	63.5	15	2103
26	AEB 2N 1450	SK62	256TC	133	15	14.26	7.87	63.27	3	C15 X 33.9#/FT	6X Ø3/4 THRU	6	6	1.5	130	65	12	1956
27	AEB 2N 1450	SK62	286TC	135	18	14.8	7.87	63.27	3	C18 X 42.7#/FT	6X Ø3/4 THRU	6	6	1.5	132	66	15	2228
28	AEB 2N 1450	SK62	326TC	136	18	14.8	7.87	63.27	3	C18 X 42.7#/FT	6X Ø3/4 THRU	6	6	1.5	133	66.5	15	2483

NOTE:  
1. ALL DIMENSIONS ±1/4

DRAWN	JMB	7-25-01	 Imo Pump 1710 Airport Road PO Box 5020 Monroe, NC USA 28111.5020		
CHECKED	JMB	7-25-01			
APPROVED	JMB	7-25-01			
COMMENTS: STANDARD ROTATION IS CLOCKWISE WHEN VIEWED FROM COUPLING END OF PUMP. SUCTION STRAINER AND DISCHARGE RELIEF VALVE MUST BE PROVIDED. UNITS ARE ACCURATELY ALIGNED AT THE FACTORY. ALIGNMENT SHOULD BE CHECKED BEFORE STARTING TO ENSURE THAT IT IS STILL WITHIN .005 (0.15) FTW. PRESTARTING: FLUSH SUCTION PIPING BEFORE CONNECTING PUMP. PRIME AND VENT PUMP. DO NOT START PUMP WITH VALVES CLOSED. READ INSTRUCTION MANUAL FOR DETAILS BEFORE STARTING.			TITLE <b>STANDARD UNIT OUTLINE DRAWING</b> <b>AEB 2N</b>		
THIRD ANGLE PROJECTION 		FIRST ORDER 71000-124-310	SIZE D	CAGE CODE 59180	DWG NO SDD20207
SCALE 1/4		WEIGHT	SHEET 1 OF 1		