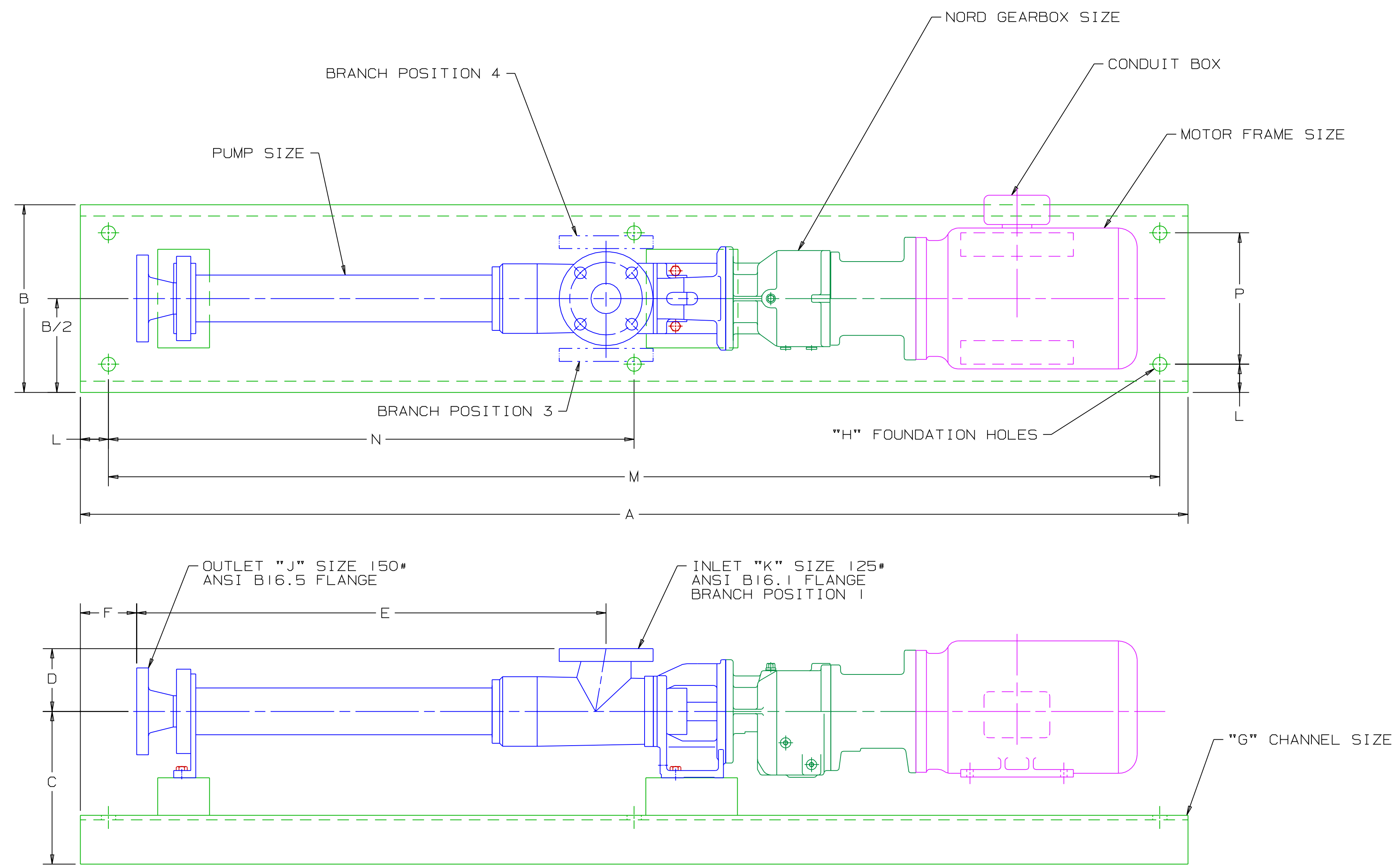


REVISION HISTORY						
CHG NO	ZONE	REV	DESCRIPTION	DATE	BY	APPROVED
05-0131	ALL	01	REDRAWN, REMOVED MOTOR SUPPORT PAD	6-6-05	ERH	MV



← ROTATION →

DRAWING CERTIFICATION	
CUSTOMER NAME	-----
CUSTOMER PO NUMBER	-----
CUSTOMER PART NUMBER	---
PUMP DATA	
ITEM NUMBER	-----
PUMP SIZE	-----
SHAFT ROTATION	-----
INLET POSITION	-----
GEAR BOX DATA	
GEAR BOX MODEL NO.	-----
SPEED	-----
MOTOR DATA	
MOTOR	-----
FRAME	-----
TYPE	-----
H.P.	-----
RPM	-----
PHASE	-----
HERTZ	-----
VOLTS	-----
DRIVER DIMENSIONS MAY VARY WITH TYPE AND MAKE OF DRIVER.	
OTHER INFORMATION	
CERTIFIED BY	-----
CERTIFIED DATE	-----
IMO ORDER NUMBER	-----
DATA REVISION NUMBER	---

ITEM NO.	PUMP SIZE	GEARBOX SIZE	MOTOR FRAME	A	B	C	D	E	F	G	H	J	K	L	M	N	P	WEIGHT (LBS)
1	AEB 4H 12	SK02	145TC	59	10	8.14	3.35	25	3	C10 X 15.3#/FT	4X Ø3/4 THRU	1	2	1.5	56	----	7	269
2	AEB 4H 12	SK12	145TC	59	10	8.14	3.35	25	3	C10 X 15.3#/FT	4X Ø3/4 THRU	1	2	1.5	56	----	7	279
3	AEB 4H 25	SK02	145TC	65.5	10	8.54	3.39	30.51	3	C10 X 15.3#/FT	6X Ø3/4 THRU	2	2	1.5	62.5	31.25	7	292
4	AEB 4H 25	SK12	145TC	65.5	10	8.54	3.39	30.51	3	C10 X 15.3#/FT	6X Ø3/4 THRU	2	2	1.5	62.5	31.25	7	296
5	AEB 4H 25	SK12	184TC	70	12	8.88	3.39	30.51	3	C12 X 20.7#/FT	6X Ø3/4 THRU	2	2	1.5	67	33.5	9	388
6	AEB 4H 50	SK22	184TC	81	12	9.75	4.09	38.01	3	C12 X 20.7#/FT	6X Ø3/4 THRU	2	3	1.5	78	39	9	473
7	AEB 4H 50	SK32	184TC	82.5	12	9.75	4.09	38.01	3	C12 X 20.7#/FT	6X Ø3/4 THRU	2	3	1.5	79.5	39.75	9	515
8	AEB 4H 50	SK32	215TC	84.5	15	10.2	4.09	38.01	3	C15 X 33.9#/FT	6X Ø3/4 THRU	2	3	1.5	81.5	40.75	12	781

NOTE:
1. ALL DIMENSIONS ±1/4

DRAWN	JMB	7-25-01	<p>Imo Pump 1710 Airport Road PO Box 5020 Monroe, NC USA 28111.5020</p>	
CHECKED	JMB	7-25-01		
APPROVED	JMB	7-25-01		
PROCESS	METHODS			
<p>COMMENTS: STANDARD ROTATION IS CLOCKWISE WHEN VIEWED FROM COUPLING END OF PUMP. SUCTION STRAINER AND DISCHARGE RELIEF VALVE MUST BE PROVIDED. ALIGNMENT: UNITS ARE ACCURATELY ALIGNED AT THE FACTORY. ALIGNMENT SHOULD BE CHECKED BEFORE STARTING TO ENSURE THAT IT IS STILL WITHIN .005 (0.15) FTH. PRESTARTING: FLUSH SUCTION PIPING BEFORE CONNECTING PUMP. PRIME AND VENT PUMP. DO NOT START PUMP WITH VALVES CLOSED. READ INSTRUCTION MANUAL FOR DETAILS BEFORE STARTING.</p>			<p>TITLE STANDARD UNIT OUTLINE DRAWING AEB 4H</p>	
THIRD ANGLE PROJECTION	FIRST ORDER	SIZE	CAGE CODE	DWG NO
USED ON	71000-124-310	D	59180	SDD20208
SCALE	1/4	WEIGHT	SHEET 1 OF 1	