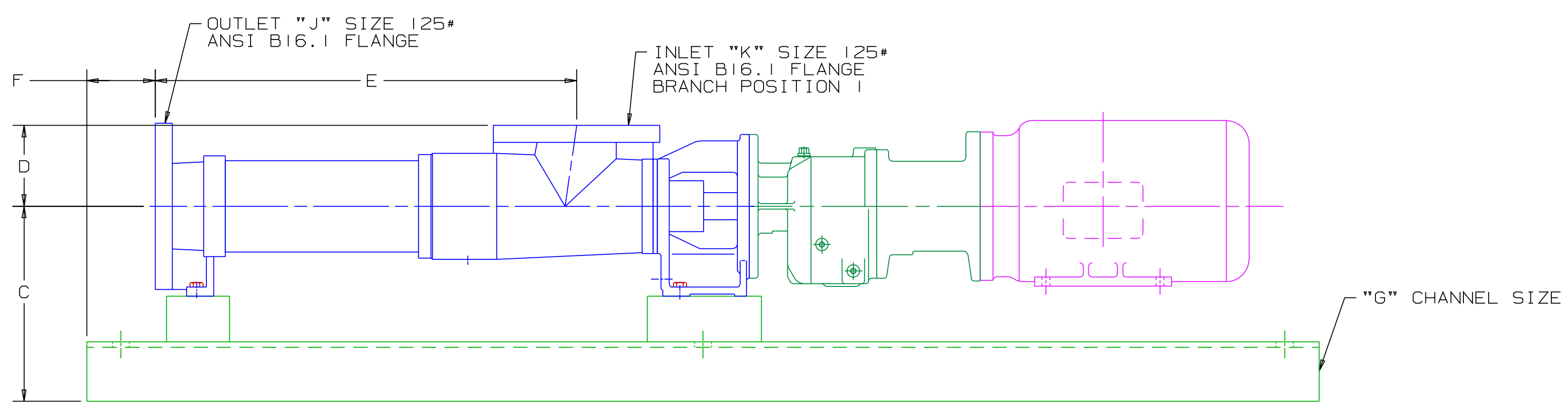
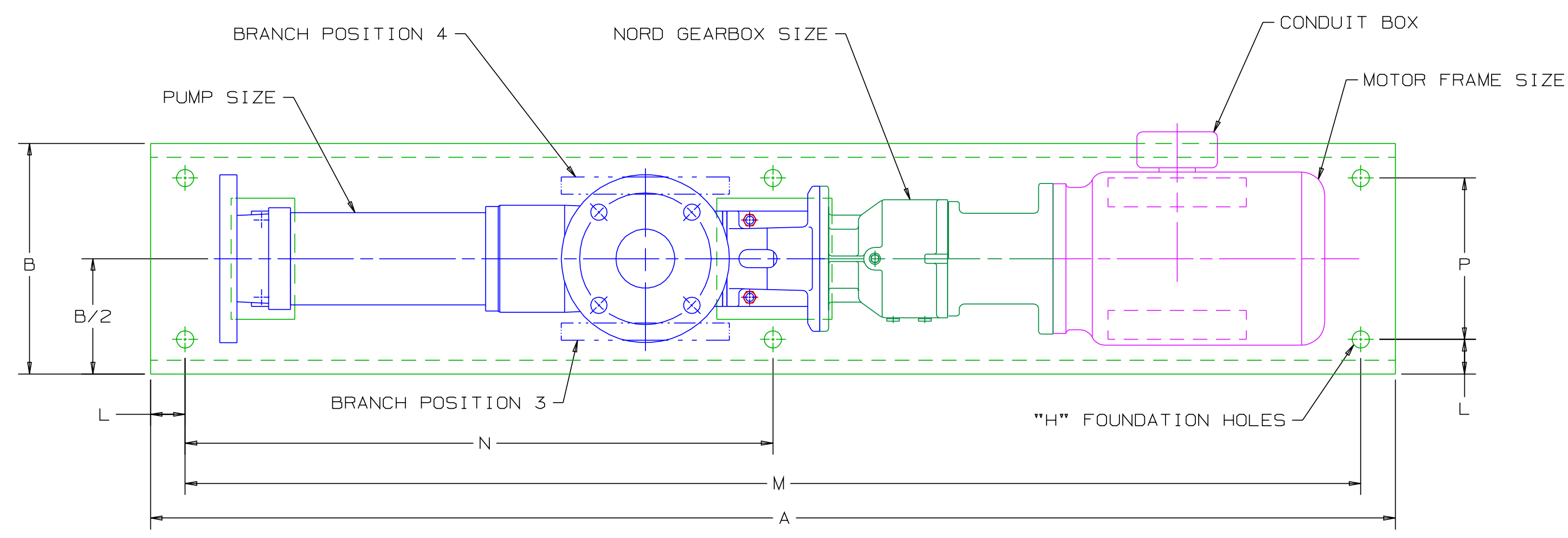


REVISION HISTORY						
CHG NO	ZONE	REV	DESCRIPTION	DATE	BY	APPROVED
05-0131	ALL	01	REDRAWN, REMOVED MOTOR SUPPORT PAD	6-6-05	ERH	MV



DRAWING CERTIFICATION

CUSTOMER NAME -----

CUSTOMER PO NUMBER -----

CUSTOMER PART NUMBER -----

PUMP DATA

ITEM NUMBER -----

PUMP SIZE -----

SHAFT ROTATION -----

INLET POSITION -----

GEAR BOX DATA

GEAR BOX MODEL NO. -----

SPEED -----

MOTOR DATA

MOTOR -----

FRAME -----

TYPE -----

H.P. -----

RPM -----

PHASE -----

HERTZ -----

VOLTS -----

DRIVER DIMENSIONS MAY VARY
WITH TYPE AND MAKE OF DRIVER.

OTHER INFORMATION

CERTIFIED BY -----

CERTIFIED DATE -----

IMO ORDER NUMBER -----

DATA REVISION NUMBER -----

ITEM NO.	PUMP SIZE	GEARBOX SIZE	MOTOR FRAME	A	B	C	D	E	F	G	H	J	K	L	N	P	WEIGHT (LBS)
1	AEDB IE 150	SK02	145TC	54	10	8.54	3.54	18.46	3	C10 X 15.3#/FT	4X Ø3/4 THRU	3	3	1.5	----	7	287
2	AEDB IE 150	SK12	184TC	58	12	8.88	3.54	18.46	3	C12 X 20.7#/FT	4X Ø3/4 THRU	3	3	1.5	----	9	377
3	AEDB IE 300	SK22	184TC	66	12	9.75	4.13	22.76	3	C12 X 20.7#/FT	6X Ø3/4 THRU	3	3	1.5	34.75	9	456
4	AEDB IE 300	SK32	215TC	69.5	15	10.2	4.13	22.76	3	C15 X 33.9#/FT	6X Ø3/4 THRU	3	3	1.5	33.25	12	734
5	AEDB IE 560	SK22	184TC	71.5	12	10.45	4.72	27.01	3	C12 X 20.7#/FT	6X Ø3/4 THRU	4	4	1.5	32	9	506
6	AEDB IE 560	SK32	215TC	75.5	15	10.91	4.72	27.01	3	C15 X 33.9#/FT	4X Ø3/4 THRU	4	4	1.5	36.25	12	828
7	AEDB IE 560	SK42	215TC	78.5	15	10.91	4.72	27.01	3	C15 X 33.9#/FT	6X Ø3/4 THRU	4	4	1.5	37.75	12	902
8	AEDB IE 560	SK42	256TC	82	15	10.91	4.72	27.01	3	C15 X 33.9#/FT	6X Ø3/4 THRU	4	4	1.5	39.5	12	952
9	AEDB IE 1200	SK32	184TC	81.5	15	11.7	5.51	33.62	3	C15 X 33.9#/FT	6X Ø3/4 THRU	5	5	1.5	39.25	12	749
10	AEDB IE 1200	SK32	215TC	84	15	11.7	5.51	33.62	3	C15 X 33.9#/FT	6X Ø3/4 THRU	5	5	1.5	39.5	12	945
11	AEDB IE 1200	SK42	215TC	87	15	11.7	5.51	33.62	3	C15 X 33.9#/FT	6X Ø3/4 THRU	5	5	1.5	39.5	12	1019
12	AEDB IE 1200	SK42	256TC	90.5	15	11.7	5.51	33.62	3	C15 X 33.9#/FT	6X Ø3/4 THRU	5	5	1.5	39.5	12	1118
13	AEDB IE 2300	SK42	256TC	100	15	12.49	6.7	41.89	3	C15 X 33.9#/FT	6X Ø3/4 THRU	6	6	1.5	48.5	12	1360
14	AEDB IE 2300	SK52	256TC	101.5	15	12.49	6.7	41.89	3	C15 X 33.9#/FT	6X Ø3/4 THRU	6	6	1.5	48.75	12	1300
15	AEDB IE 2300	SK52	286TC	104.5	18	13.04	6.7	41.89	3	C18 X 42.7#/FT	6X Ø3/4 THRU	6	6	1.5	50.75	15	1628
16	AEDB IE 4500	SK42	256TC	112	15	14.26	7.87	50.31	3	C15 X 33.9#/FT	6X Ø3/4 THRU	8	8	1.5	54.5	12	1543
17	AEDB IE 4500	SK52	256TC	113.5	15	14.26	7.87	50.31	3	C15 X 33.9#/FT	6X Ø3/4 THRU	8	8	1.5	55.25	12	1552
18	AEDB IE 4500	SK52	286TC	118	18	14.8	7.87	50.31	3	C18 X 42.7#/FT	6X Ø3/4 THRU	8	8	1.5	57.5	15	1888
19	AEDB IE 4500	SK62	256TC	121	15	14.26	7.87	50.31	3	C15 X 33.9#/FT	6X Ø3/4 THRU	8	8	1.5	59	12	1759
20	AEDB IE 4500	SK62	286TC	123	18	14.8	7.87	50.31	3	C18 X 42.7#/FT	6X Ø3/4 THRU	8	8	1.5	59	15	2013
21	AEDB IE 4500	SK62	326TC	124	18	14.8	7.87	50.31	3	C18 X 42.7#/FT	6X Ø3/4 THRU	8	8	1.5	59	15	2268

NOTE:
1. ALL DIMENSIONS ±1/4

DRAWN	JMB	7-25-01	<p>Imo Pump 1710 Airport Road PO Box 5020 Monroe, NC USA 28111.5020</p>
CHECKED	JMB	7-25-01	
APPROVED	JMB	7-25-01	
PROCESS	METHODS		
<p>COMMENTS: STANDARD ROTATION IS CLOCKWISE WHEN VIEWED FROM COUPLING END OF PUMP. SUCTION STRAINER AND DISCHARGE RELIEF VALVE MUST BE PROVIDED. ALIGNMENT: UNITS ARE ACCURATELY ALIGNED AT THE FACTORY. ALIGNMENT SHOULD BE CHECKED BEFORE STARTING TO ENSURE THAT IT IS STILL WITHIN .005 (0.15) FTW. PRESTARTING: FLUSH SUCTION PIPING BEFORE CONNECTING PUMP. PRIME AND VENT PUMP. DO NOT START PUMP WITH VALVES CLOSED. READ INSTRUCTION MANUAL FOR DETAILS BEFORE STARTING.</p>			<p>TITLE STANDARD UNIT OUTLINE DRAWING AEDB IE</p>
<p>THIRD ANGLE PROJECTION</p>		<p>FIRST ORDER</p> <p>71000-124-310</p>	<p>SIZE</p> <p>D</p> <p>CAGE CODE</p> <p>59180</p> <p>DWG NO</p> <p>SDD20209</p>
<p>SCALE</p> <p>1/4</p>		<p>WEIGHT</p>	<p>SHEET</p> <p>1 OF 1</p>