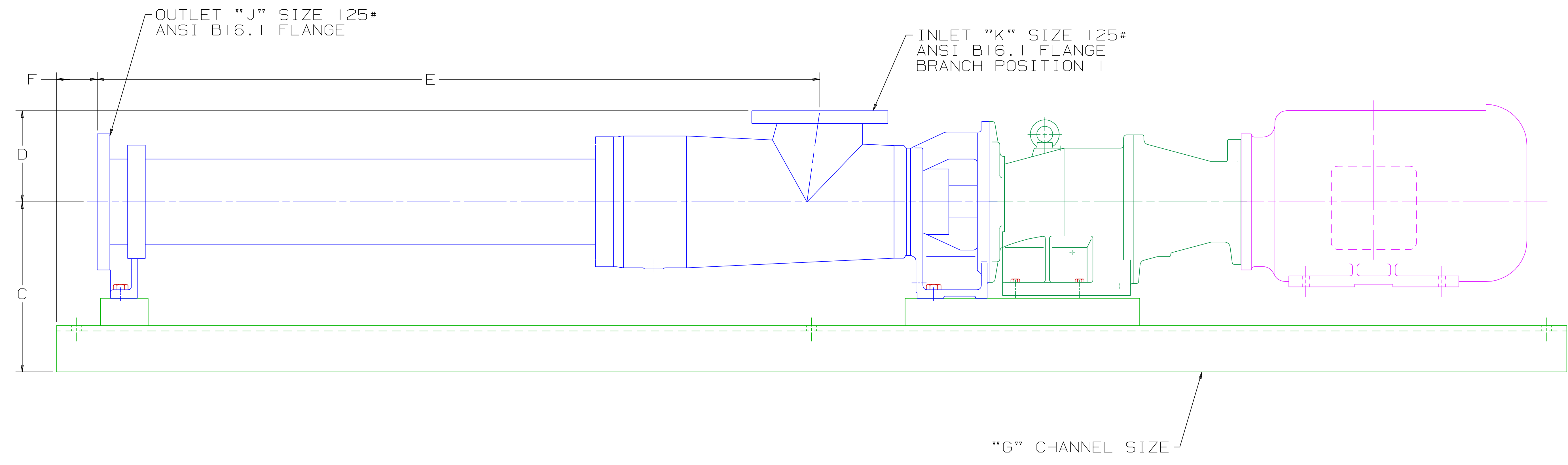
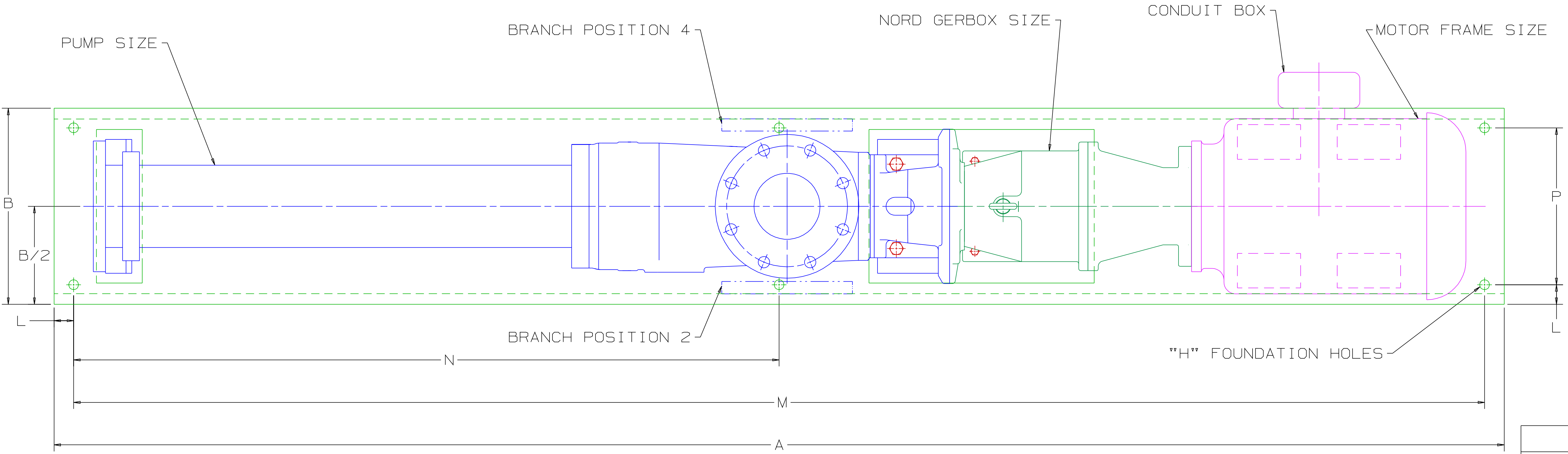


REVISION HISTORY						
CHG NO	ZONE	REV	DESCRIPTION	DATE	BY	APPROVED
05-0131	ALL	01	REDRAWN, REMOVED MOTOR SUPPORT PAD	6-6-05	ERH	MV



DRAWING CERTIFICATION	
CUSTOMER NAME	-----
CUSTOMER PO NUMBER	----
CUSTOMER PART NUMBER	---
PUMP DATA	
ITEM NUMBER	-----
PUMP SIZE	-----
SHAFT ROTATION	-----
INLET POSITION	-----
GEAR BOX DATA	
GEAR BOX MODEL NO.	----
SPEED	-----
MOTOR DATA	
MOTOR	-----
FRAME	-----
TYPE	-----
H.P.	-----
RPM	-----
PHASE	-----
HERTZ	-----
VOLTS	-----
DRIVER DIMENSIONS MAY VARY WITH TYPE AND MAKE OF DRIVER.	
OTHER INFORMATION	
CERTIFIED BY	-----
CERTIFIED DATE	-----
IMO ORDER NUMBER	-----
DATA REVISION NUMBER	---

ITEM NO.	PUMP SIZE	GEARBOX SIZE	MOTOR FRAME	A	B	C	D	E	F	G	H	J	K	L	M	N	P	WEIGHT (LBS)
1	AEDB 2N 1200	SK42	256TC	111	15	12.49	6.7	53.11	3	C15 X 33.9#/FT	6X Ø3/4 THRU	5	5	1.5	108	54	12	1358
2	AEDB 2N 1200	SK52	286TC	112.5	15	12.49	6.7	53.11	3	C15 X 33.9#/FT	6X Ø3/4 THRU	5	5	1.5	110	54.75	12	1298
3	AEDB 2N 1200	SK52	286TC	116	18	13.04	6.7	53.11	3	C18 X 42.7#/FT	6X Ø3/4 THRU	5	5	1.5	113	56.5	15	1635
4	AEDB 2N 2300	SK42	256TC	123	15	14.26	7.87	65.47	3	C15 X 33.9#/FT	6X Ø3/4 THRU	6	6	1.5	120	60	12	1608
5	AEDB 2N 2300	SK52	256TC	124.5	15	14.26	7.87	65.47	3	C15 X 33.9#/FT	6X Ø3/4 THRU	6	6	1.5	122	60.75	12	1617
6	AEDB 2N 2300	SK52	286TC	132	18	14.8	7.87	65.47	3	C18 X 42.7#/FT	6X Ø3/4 THRU	6	6	1.5	129	64.5	15	1977
7	AEDB 2N 2300	SK62	256TC	132	15	14.26	7.87	65.47	3	C15 X 33.9#/FT	6X Ø3/4 THRU	6	6	1.5	129	64.5	12	1824
8	AEDB 2N 2300	SK62	286TC	137	18	14.8	7.87	65.47	3	C18 X 42.7#/FT	6X Ø3/4 THRU	6	6	1.5	134	67	15	2102
9	AEDB 2N 2300	SK62	326TC	138	18	14.8	7.87	65.47	3	C18 X 42.7#/FT	6X Ø3/4 THRU	6	6	1.5	135	67.5	15	2317

NOTE:  
1. ALL DIMENSIONS ±1/4

DRAWN	JMB	7-25-01
CHECKED	JMB	7-25-01
APPD	JMB	7-25-01
METHODS		

COMMENTS:  
STANDARD ROTATION IS CLOCKWISE WHEN VIEWED FROM COUPLING END OF PUMP. SUCTION STRAINER AND DISCHARGE RELIEF VALVE MUST BE PROVIDED.  
ALIGNMENT UNITS ARE ACCURATELY ALIGNED AT THE FACTORY. ALIGNMENT SHOULD BE CHECKED BEFORE STARTING TO ENSURE THAT IT IS STILL WITHIN .005 (0.13) FTM.  
FLUSH SUCTION PIPING BEFORE CONNECTING PUMP. PRIME AND VENT PUMP. DO NOT START PUMP WITH VALVES CLOSED. READ INSTRUCTION MANUAL FOR DETAILS BEFORE STARTING.

IMMO PUMP  
1710 Airport Road  
PO Box 5020  
Monroe, NC USA  
28111.5020

TITLE	STANDARD UNIT OUTLINE DRAWING
SIZE	F
CAGE CODE	59180
DWG NO	SDD20210
SCALE	1/4
WEIGHT	
SHEET	1 OF 1