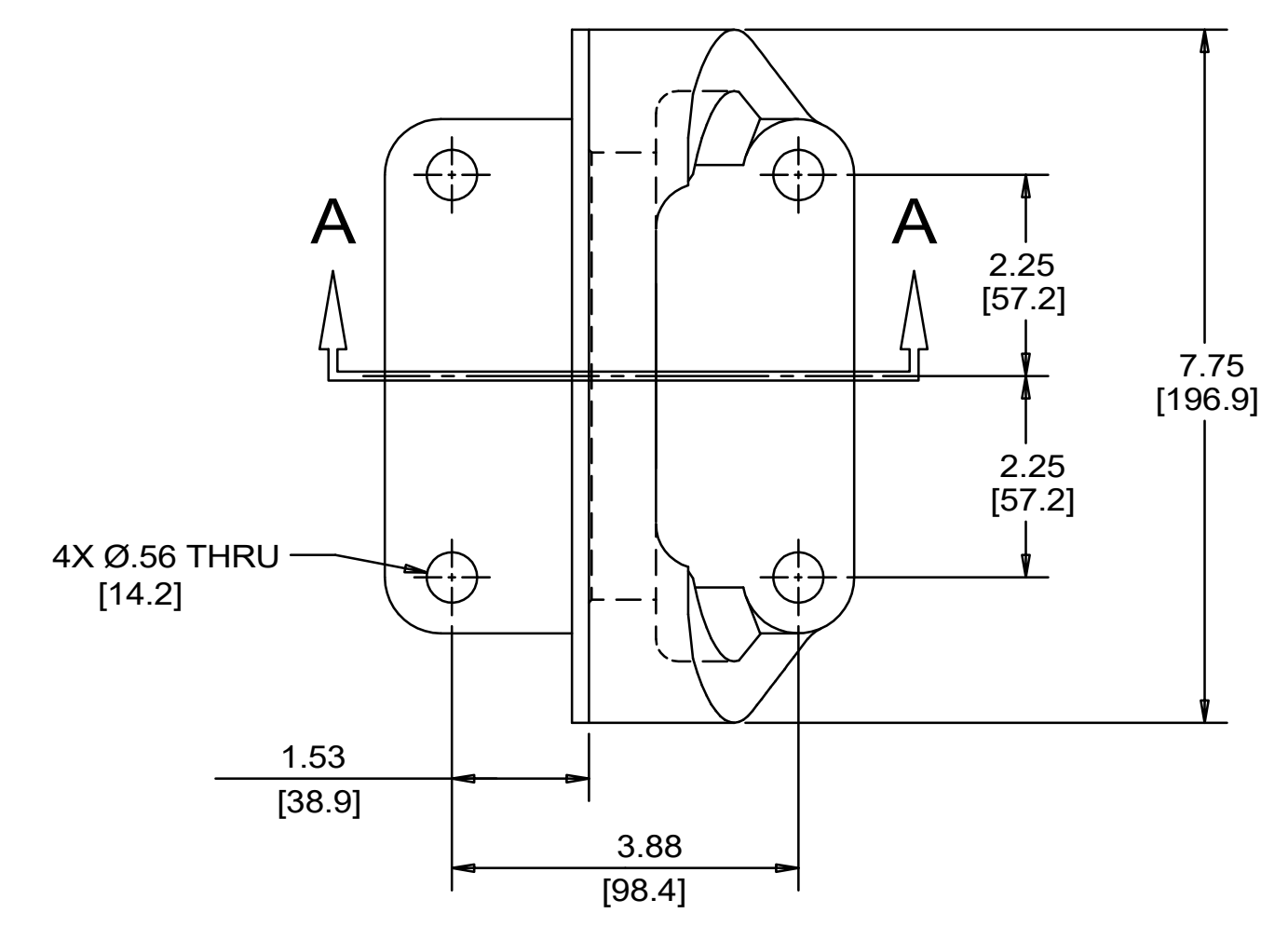
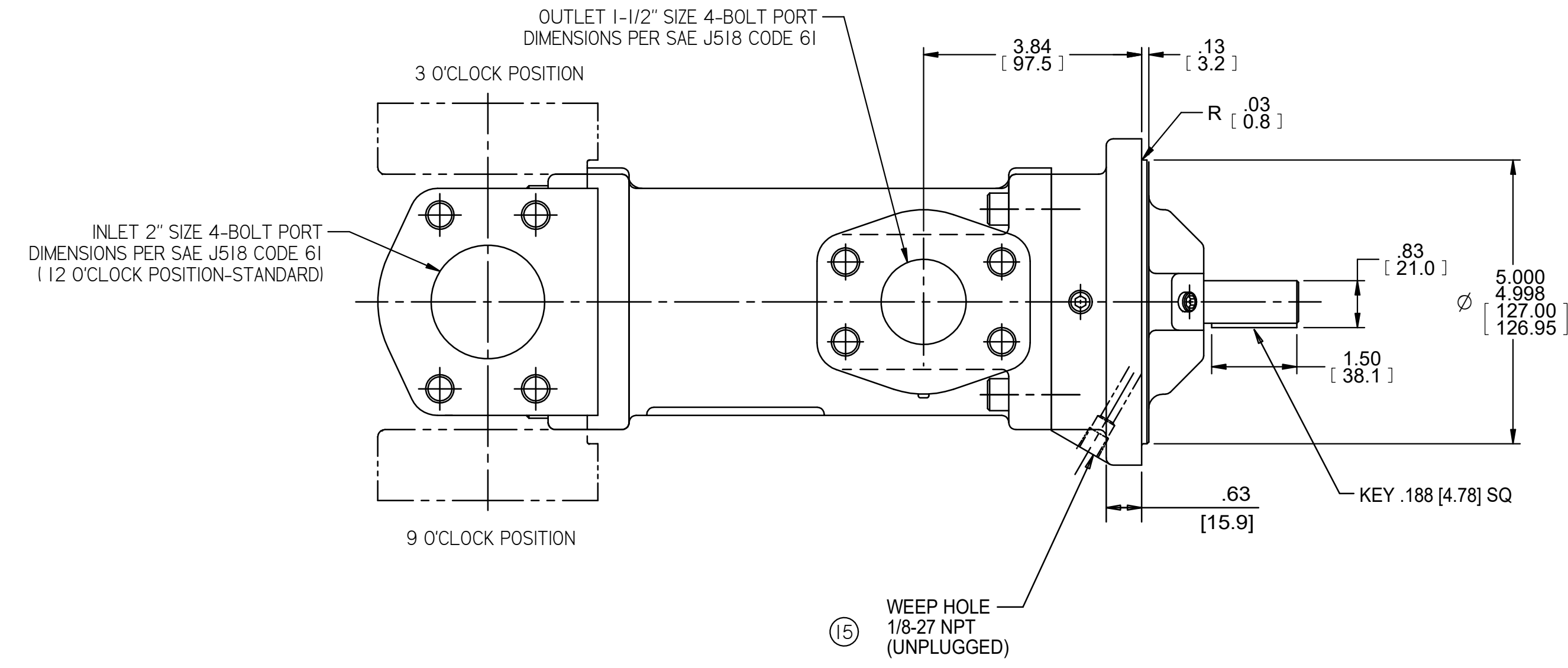
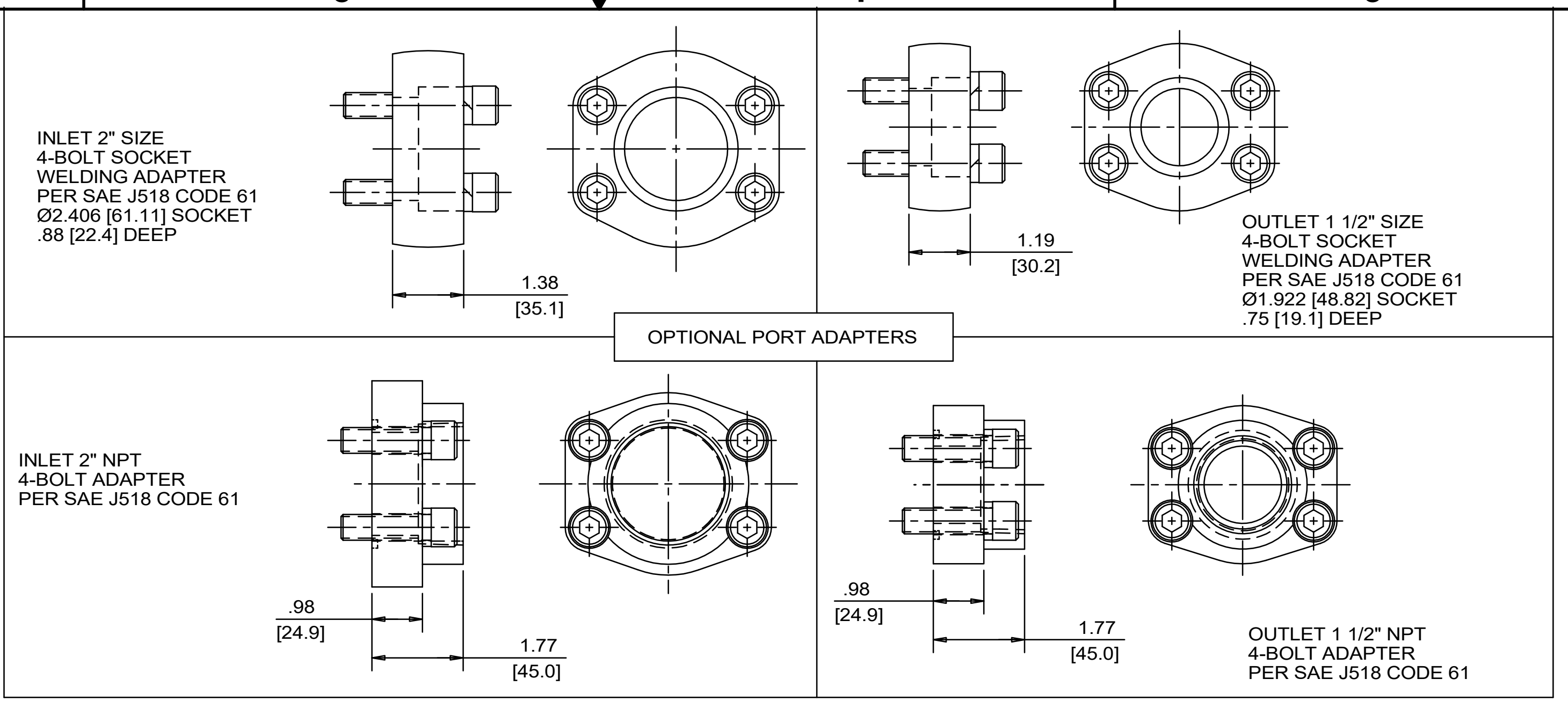


REVISION HISTORY						
CHG NO	ZONE	REV	DESCRIPTION	DATE	BY	APPROVED
24-0123	ALL	20	2.82 (715.1) WAS 2.76 (70.2)	7-11-24	CDG	JEC



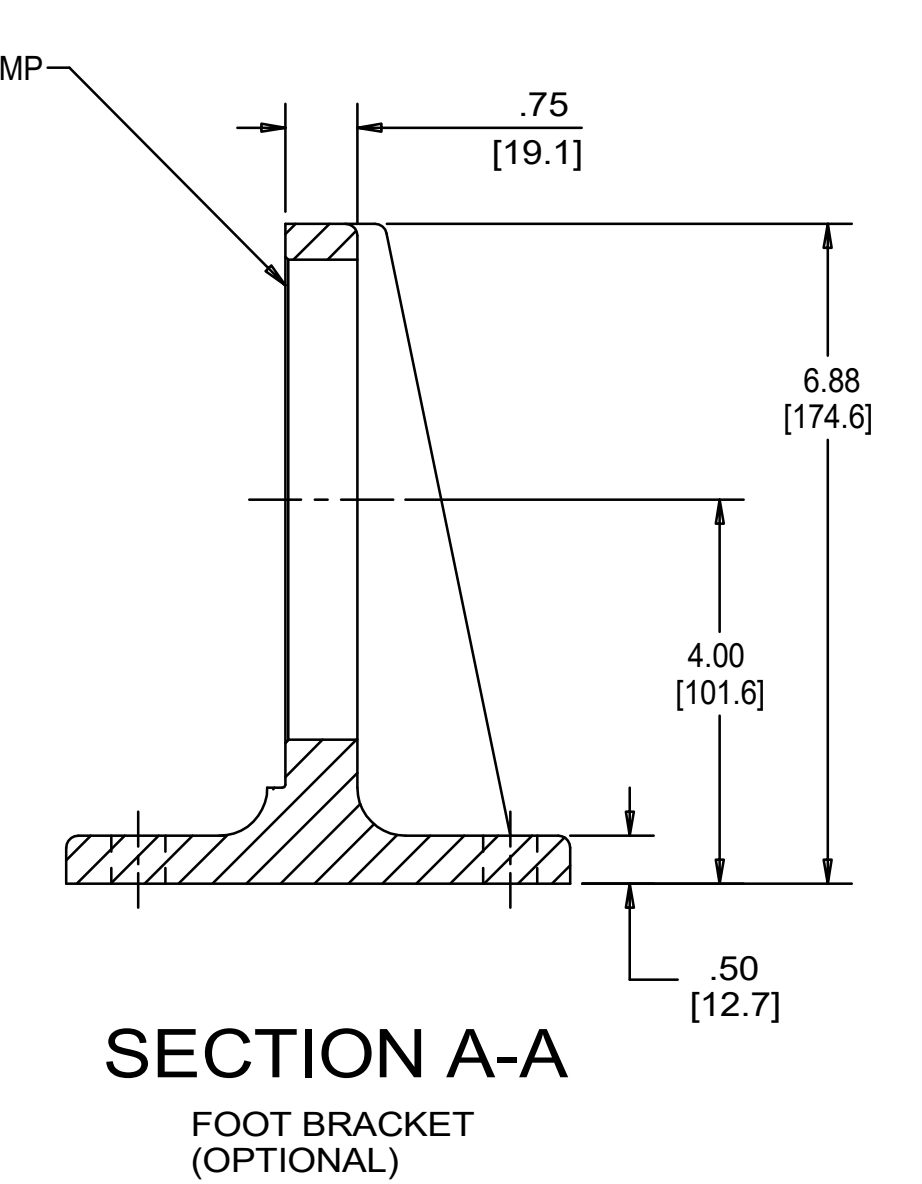
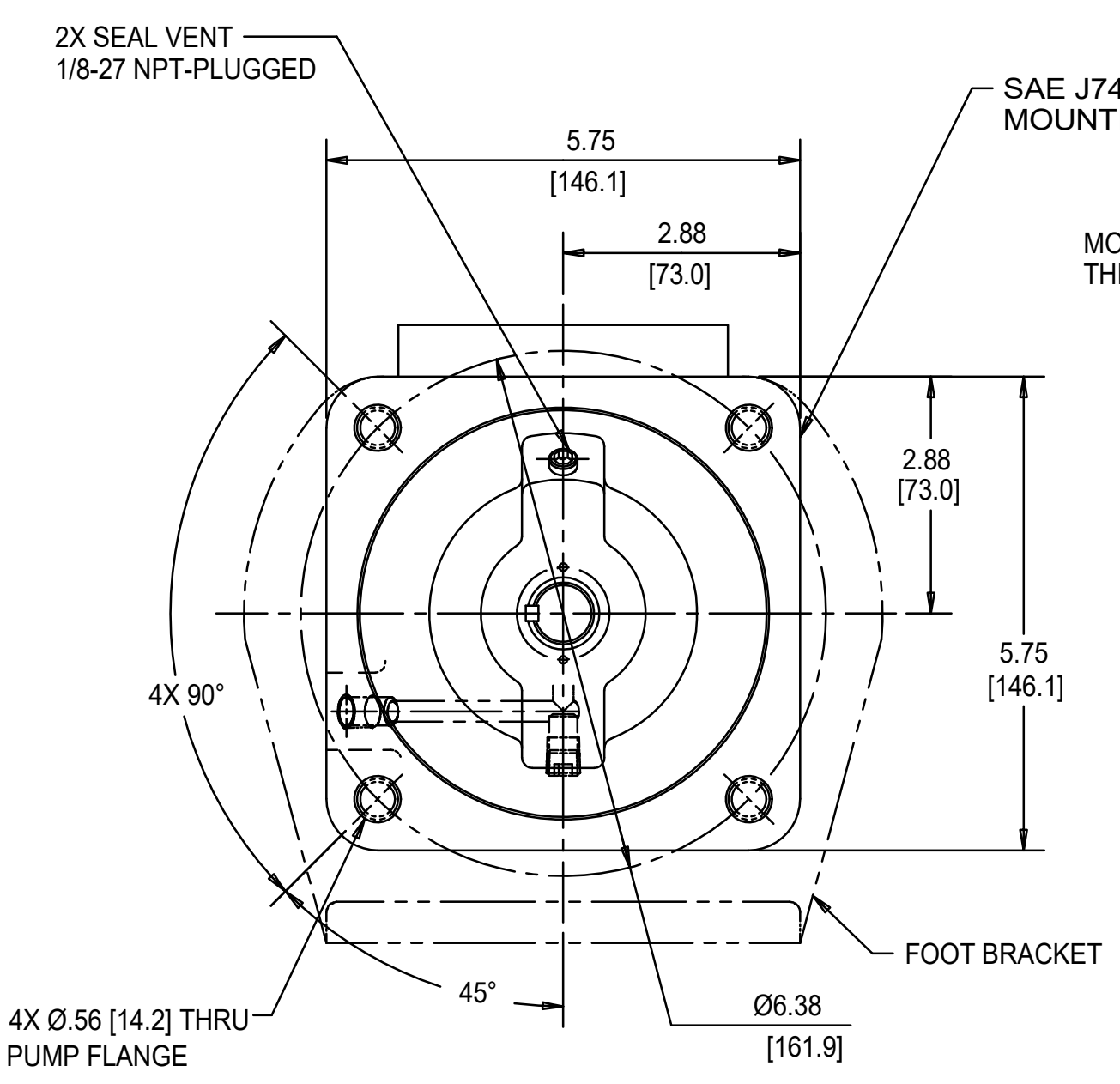
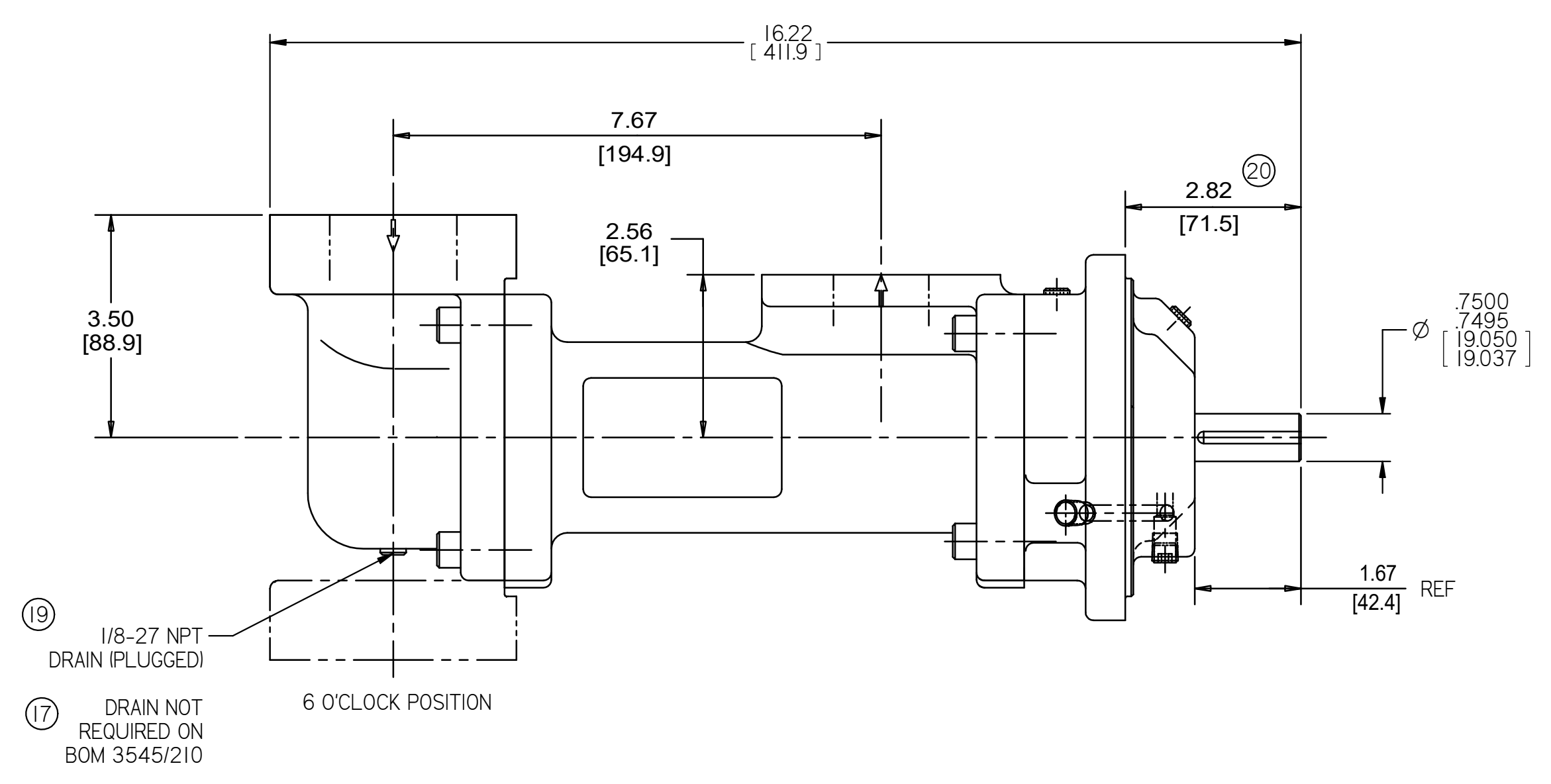
COORDINATE SYSTEM FOR MAXIMUM PUMP FORCES (F) AND MOMENTS (M)

	LBF	N
INLET: Fx, Fy, Fz	150	667
OUTLET: Fx, Fy, Fz	113	500

	LB FT	Nm
INLET: Mx, My, Mz	250	339
OUTLET: Mx, My, Mz	188	254

FORCE AND MOMENT VALUES ARE RELATIVE TO CENTER OF INLET AND OUTLET PORT FACES.



**DRAWING CERTIFICATION**

SEAL VENT

SHAFT

12 O'CLOCK

9 O'CLOCK

3 O'CLOCK

6 O'CLOCK

\*\*\*SEE NOTES 1, 2 & 3\*\*\*

CUSTOMER NAME -----

CUSTOMER PO NUMBER -----

CUSTOMER PART NUMBER -----

BOM NUMBER -----

PUMP TYPE -----

SHAFT ROTATION -----

INLET PORT ORIENTATION -----

OUTLET PORT ORIENTATION -----

INLET PORT OPTION -----

INLET ADAPTER OPTION -----

OUTLET PORT OPTION -----

OUTLET ADAPTER OPTION -----

OTHER INFORMATION -----

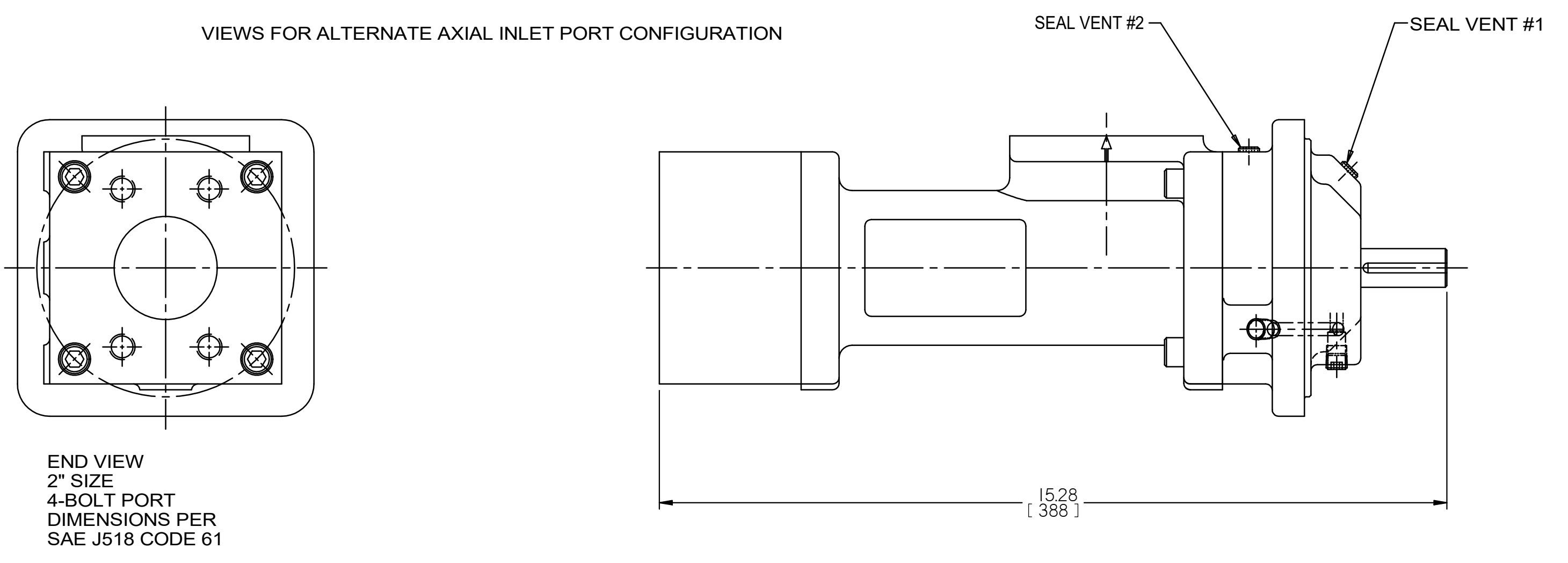
CERTIFIED BY -----

CERTIFIED DATE -----

IMO ORDER NUMBER -----

DATA REVISION NUMBER -----

- NOTES:**
- TO MAXIMIZE SEAL LIFE, SEAL VENT MUST BE ORIENTED UPWARD (12 O'CLOCK) WHEN PUMP IS INSTALLED HORIZONTALLY. VENT ORIENTATION IS NOT CRITICAL WHEN PUMP IS INSTALLED WITH SHAFT VERTICALLY UPWARD.
  - PORT, FOOT, AND SEAL VENT ORIENTATIONS ARE SUPPLIED AS SHOWN ON DRAWING UNLESS OTHERWISE SPECIFIED.
  - ALTERNATE PORT AND FOOT ORIENTATIONS ARE PROVIDED IF SPECIFIED ON ORDER. AVAILABLE ORIENTATIONS ARE 3, 6, 9, AND 12 O'CLOCK.
  - BOLT PATTERN FOR SAE 4-BOLT AXIAL INLET IS ALWAYS ORIENTED AS SHOWN WITH RESPECT TO OUTLET PORT.
  - APPROXIMATE PUMP WEIGHT (WITHOUT ADAPTERS):  
FLANGE MOUNT PUMP----- 42.8 LBS. (19.4 kgs)  
FOOT MOUNT PUMP----- 54.9 LBS. (25.0 kgs)
  - UNLESS OTHERWISE SPECIFIED, ALL DIMENSIONS ARE IN INCHES. DIMENSIONS IN ( ) ARE MILLIMETERS.



DRAWN	ERH	3-3-99			
CHECKED	NRS	4-8-99			
APPROVED	MJC	4-8-99			
MATERIAL	UNLESS OTHERWISE SPECIFIED ASME Y14.5M-1994			TITLE	OUTLINE STANDARD (STEEL)
PROCESS				SIZE	3G/_S_A[143/162]_
DESIGNATION				FIRST ORDER	E1102A
REVISIONS				SCALE	1/2
USED ON				WEIGHT	SEE NOTE 5
				SHEET	1 OF 1