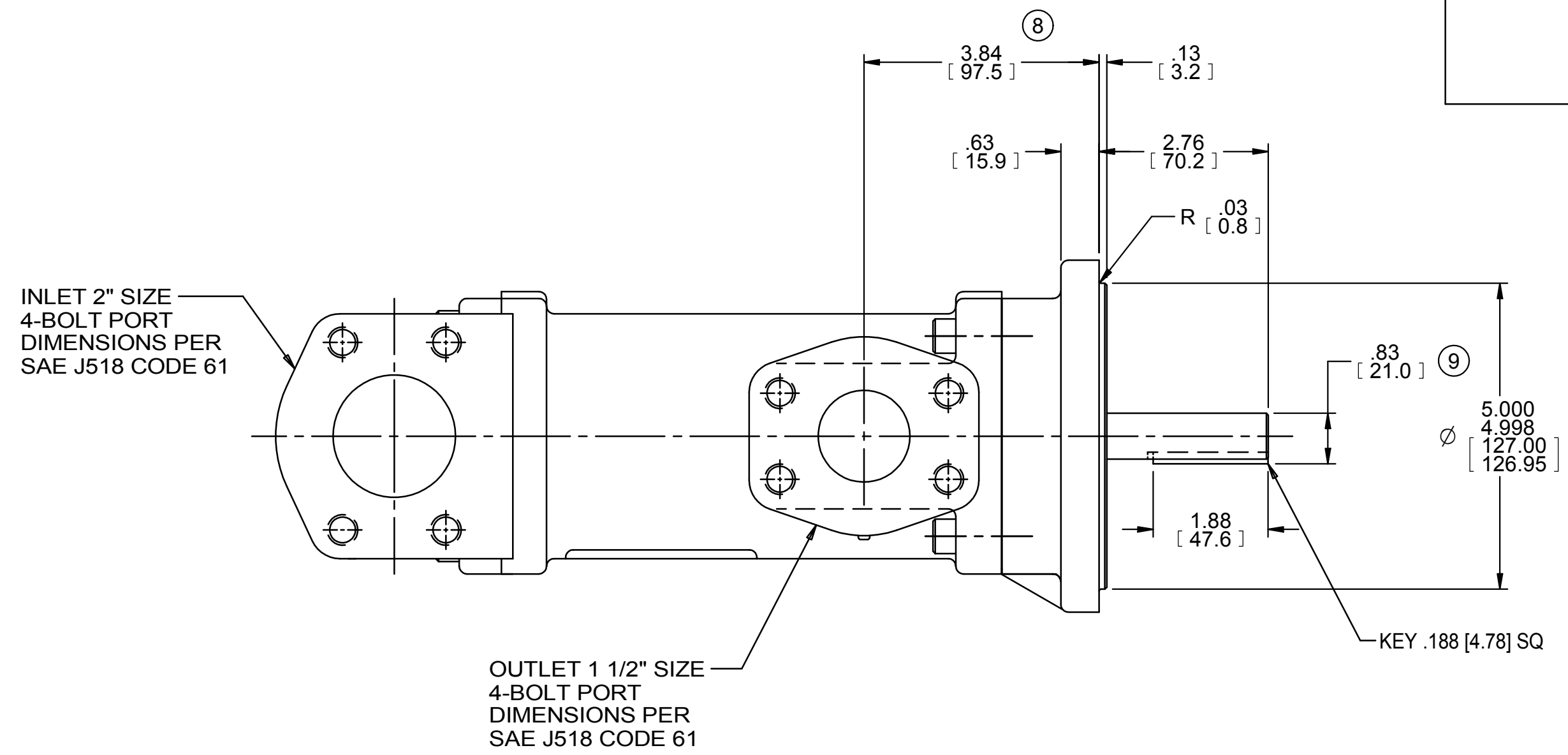
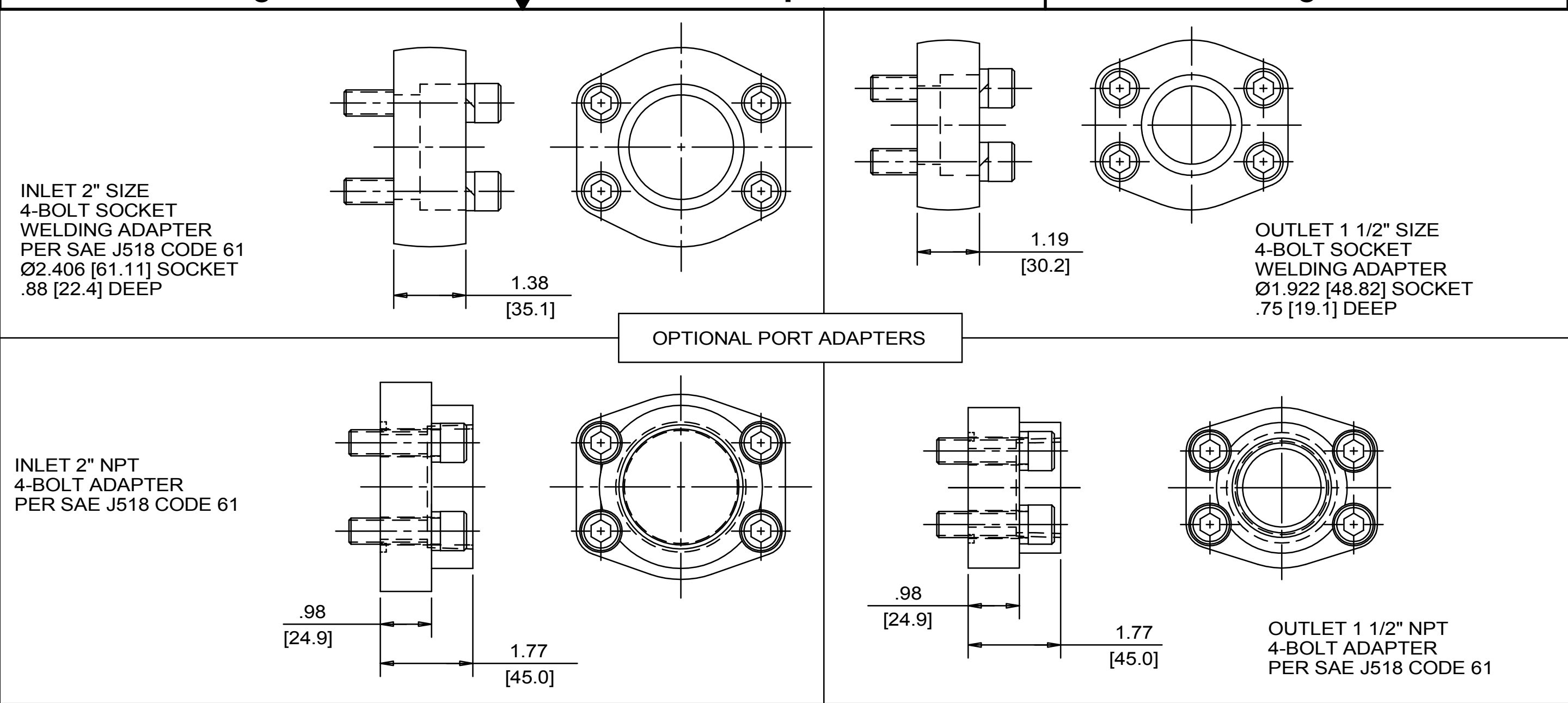


REVISION HISTORY						
CHG NO	ZONE	REV	DESCRIPTION	DATE	BY	APPROVED
22-0000	ALL	10	UPDATED TITLE BLOCK, FORCES & MOMENTS STAMP	1-27-22	CDG	CDG

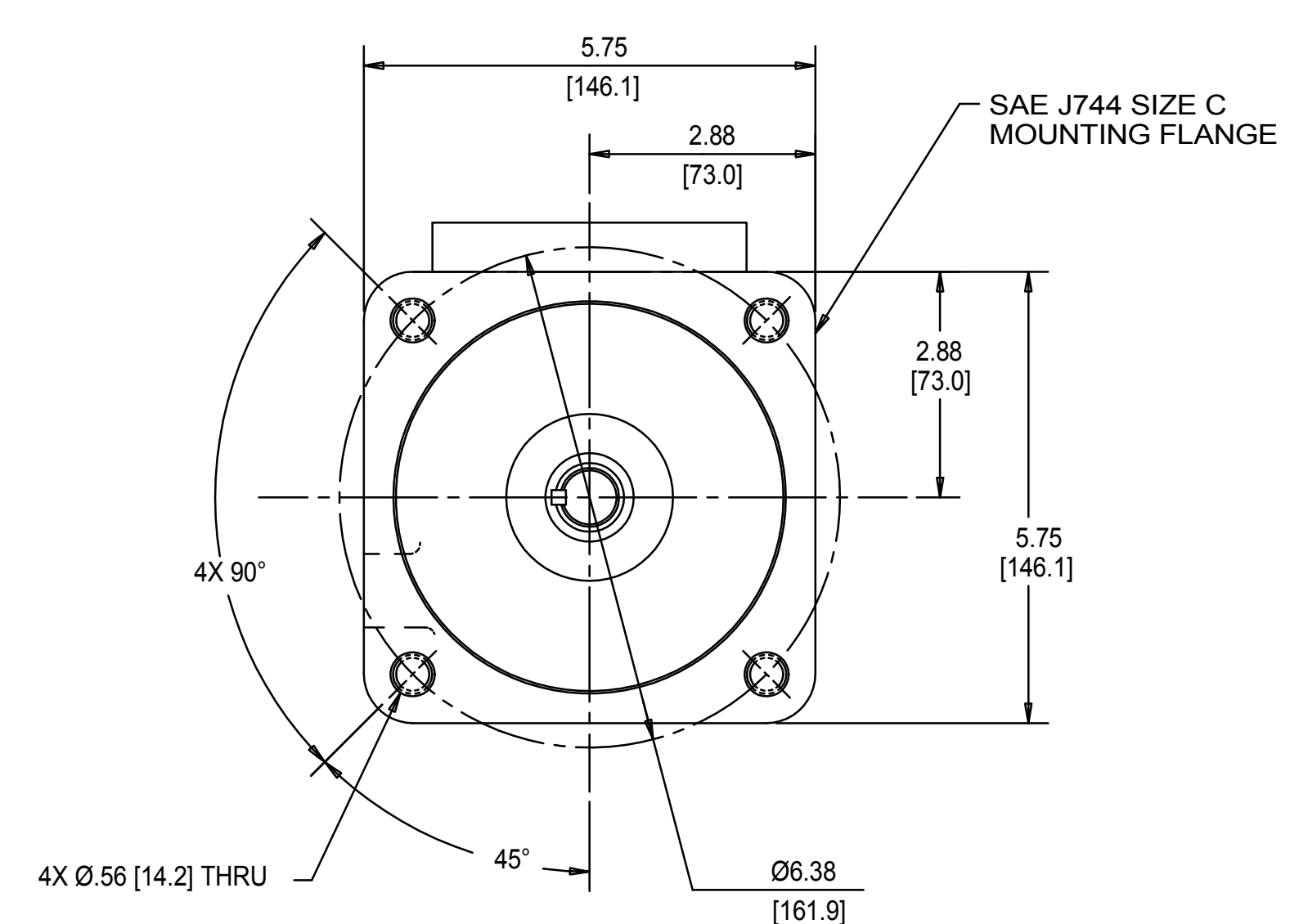
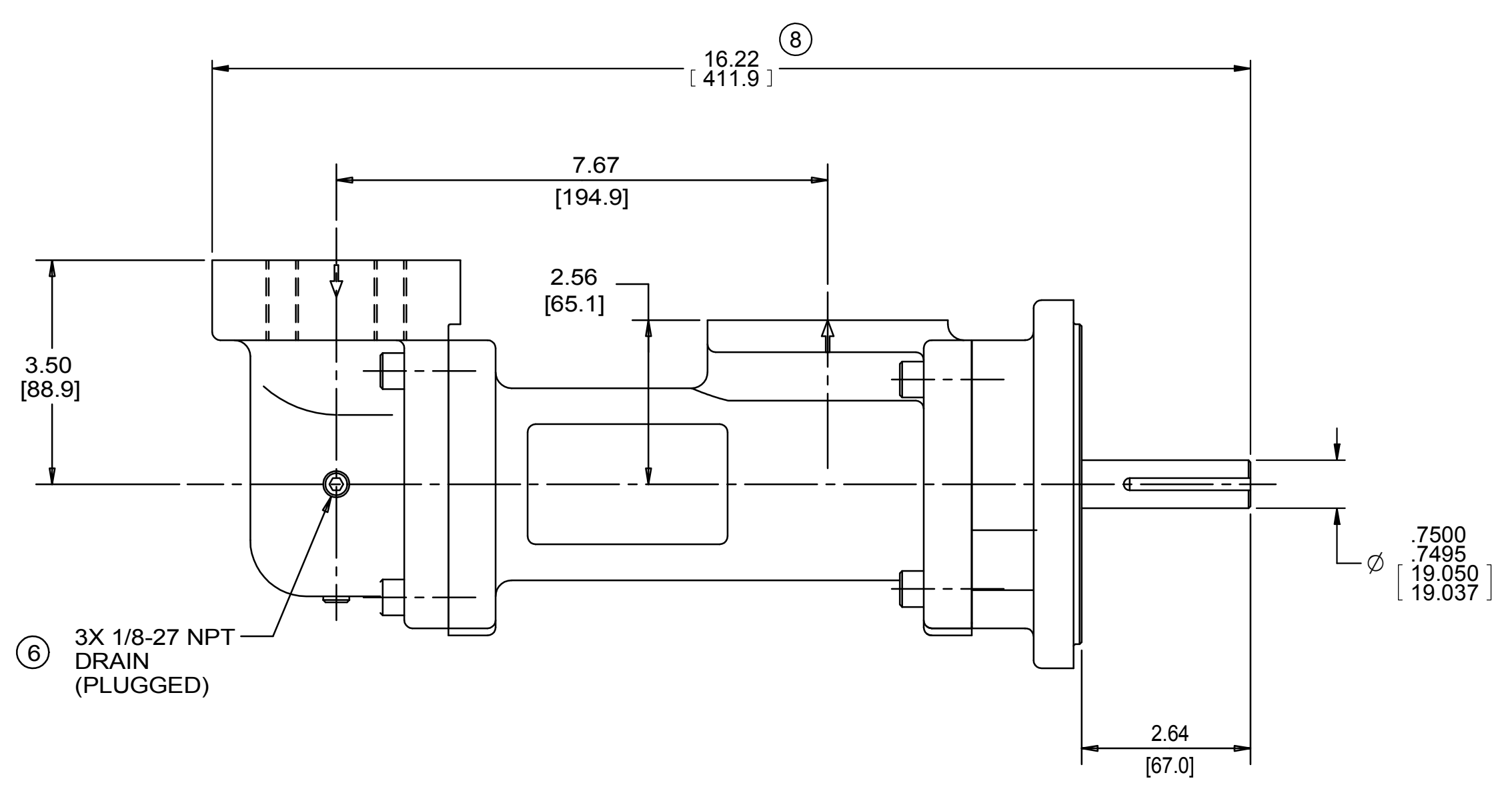


COORDINATE SYSTEM FOR MAXIMUM PUMP FORCES (F) AND MOMENTS (M)

	LBF	N
INLET Fx, Fy, Fz	150	667
OUTLET Fx, Fy, Fz	113	500

	LB.FT	Nm
INLET Mx, My, Mz	250	339
OUTLET Mx, My, Mz	188	254

FORCE AND MOMENT VALUES ARE RELATIVE TO CENTER OF INLET AND OUTLET PORT FACES.



DRAWING CERTIFICATION

CUSTOMER NAME -----

CUSTOMER PO NUMBER -----

CUSTOMER PART NUMBER -----

BOM NUMBER -----

PUMP TYPE -----

SHAFT ROTATION -----

INLET PORT ORIENTATION -----

INLET PORT OPTION -----

INLET ADAPTER OPTION -----

OUTLET ADAPTER OPTION -----

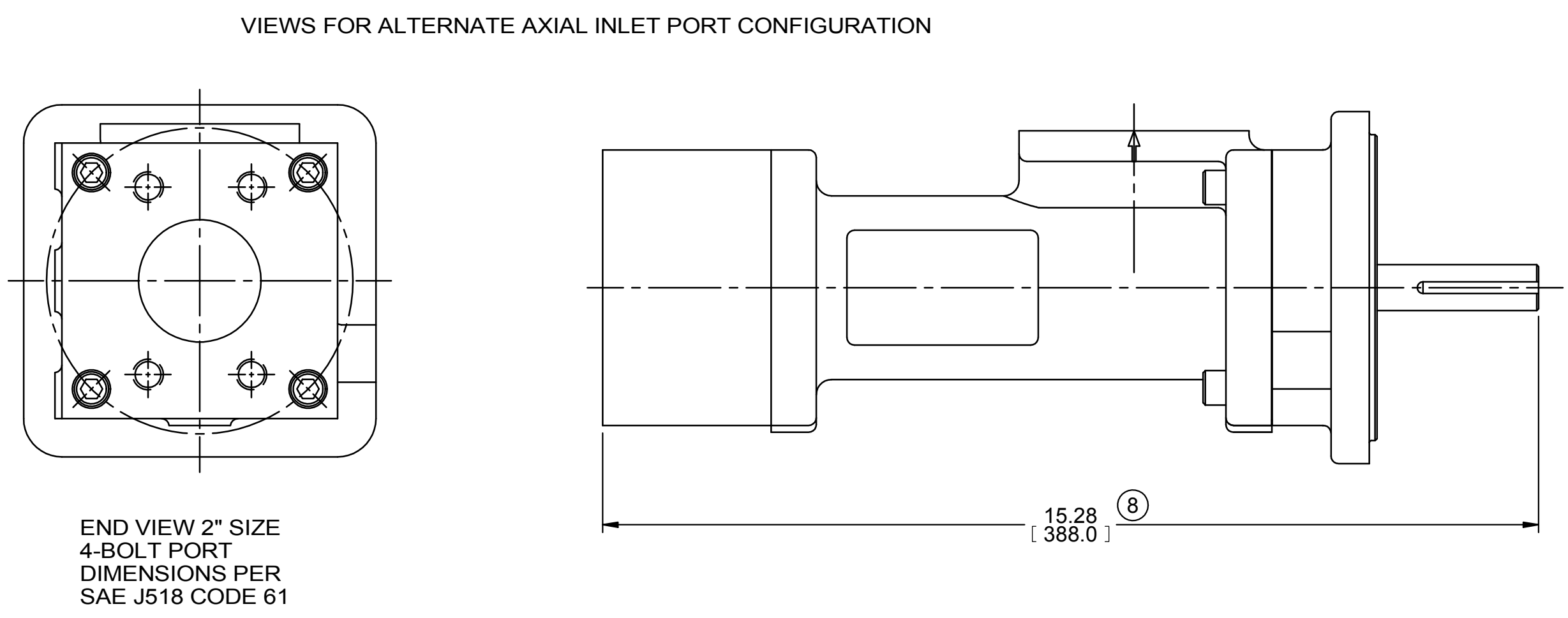
OTHER INFORMATION -----

CERTIFIED BY -----

CERTIFIED DATE -----

IMO ORDER NUMBER -----

DATA REVISION NUMBER -----



- NOTES:
- PORT ORIENTATIONS SUPPLIED AS SHOWN UNLESS OTHERWISE SPECIFIED.
 - ALTERNATE RADIAL INLET PORT ORIENTATIONS PROVIDED IF SPECIFIED ON ORDER. AVAILABLE ALTERNATE ORIENTATIONS ARE 3, 6, 9, AND 12 O'CLOCK RELATIVE TO OUTLET PORT.
 - BOLT PATTERN FOR SAE 4-BOLT AXIAL INLET IS ALWAYS ORIENTED AS SHOWN WITH RESPECT TO OUTLET PORT.
 - APPROXIMATE PUMP WEIGHT (WITHOUT ADAPTERS): 41.3 LBS. (18.8 kgs)
 - UNLESS OTHERWISE SPECIFIED, ALL DIMENSIONS ARE IN INCHES. DIMENSIONS IN $\{\}$ ARE MILLIMETERS.

DRAWN	CDH	6-10-99		
CHECKED	NRS	7-20-99		
APPROVED	NRS	7-20-99	TITLE OUTLINE STANDARD (STEEL) 3C/NNS_IAI43/1621_	
PROCESS	METHODS		FIRST ORDER E1102A	SAGE CODE F
UNLESS OTHERWISE SPECIFIED ASME Y14.5M-1994			DWG NO SDD19720	SCALE 1/2
<small> COMMENTS: SUCTION STRAINER AND DISCHARGE RELIEF VALVE MUST BE PROVIDED ALIGNMENT UNITS ARE ACCURATELY ALIGNED AT THE FACTORY. ALIGNMENT SHOULD BE CHECKED BEFORE STARTING TO ENSURE THAT IT IS STILL WITHIN TOL- ERANCES. PRECAUTIONS: FLUSH SUCTION PUMP BEFORE CONNECTING PUMP. PRIME AND VENT PUMP. READ INSTRUCTION MANUAL FOR DETAILS BEFORE STARTING. </small>			WEIGHT SEE NOTE 4	SHEET 1 OF 1