



IMO®

**INSTRUCTION MANUAL
AND
PARTS LIST
FOR
PG/RG3D_-187, 218, 250 and 312
SERIES PUMPS**



WARNING

This Instruction Manual and General Instructions Manual, CA-1, should be read thoroughly prior to pump installation, operation or maintenance.


Manual No. SRM00086


Rev. 01 (21-0001)

October, 2021



READ THIS ENTIRE PAGE BEFORE PROCEEDING

FOR SAFETY OF PERSONNEL AND TO PREVENT DAMAGE TO EQUIPMENT, THE FOLLOWING NOMENCLATURE HAS BEEN USED IN THIS MANUAL:

	DANGER	
Failure to observe precautions noted in this box can result in severe bodily injury or loss of life.		

	WARNING	
Failure to observe precautions noted in this box can cause injury to personnel by accidental contact with equipment or liquids. Protection should be provided by user to prevent accidental contact.		

	CAUTION		ATTENTION
Failure to observe precautions noted in this box can cause damage or failure of equipment.			

Non compliance of safety instructions identified by the following symbol could affect safety for persons: <div style="text-align: center;"></div>	Safety instructions where electrical safety is involved are identified by: <div style="text-align: center;"></div>	Safety instructions which shall be considered for reasons of safe operation of pump and/or protection of pump itself are marked by the sign: <div style="text-align: center;">ATTENTION</div>
---	--	---

	ATTENTION	
If operation of pump is critical to your business, we strongly recommend you keep a spare pump or major repair kit in stock at all times. As a minimum, a minor repair kit (o-rings, gaskets, shaft seal and bearings) should be kept in stock so pump refurbishment after internal inspection can be accomplished.		

CONTENTS

Safety and Table of Contents	A
A. General Instructions	1
B. Introduction	1
C. Description of Equipment	1
D. Pump Model Identification	2
E. Ordering Instructions	2
F. Operation	3
G. Parts List	4
H. Pump Maintenance, Disassembly, Reassembly	4-7
I. Troubleshooting	8
J. Field and Factory Service and Parts	8
K. Mechanical Seal Drawing	8
L. Assembly Drawings	9-12


A. GENERAL INSTRUCTIONS

The instructions found herein cover the disassembly, assembly and parts identification of PG/RG3D-187, 218, 250 and 312 series pumps. Both the original design with idler cups and the newer design with hydrostatic idlers are covered.

NOTE: Individual contracts may have specific provisions that vary from this manual. Should any questions arise which may not be answered by these instructions, refer to the General Instructions Manual, CA-1, provided with your order. For further detailed information and technical assistance please refer to Imo Pump, Technical/Customer Service Department, at (704) 289-6511.

This manual cannot possibly cover every situation connected with installation, operation, inspection, and maintenance of equipment supplied. Every effort was made to prepare text of manual so that engineering and design data is transformed into the most easily understood wording. Imo Pump must assume personnel assigned to operate and maintain supplied equipment and apply this instruction manual have sufficient technical knowledge and are experienced to apply sound safety and operational practices which may not be otherwise covered by this manual.

In applications where equipment furnished by Imo Pump is to become part of processing machinery, these instructions should be thoroughly reviewed to ensure proper fit of said equipment into overall plant operational procedures.

	WARNING
If installation, operation, and maintenance instructions are not correctly and strictly followed and observed, injury to personnel or serious damage to pump could result. Imo Pump cannot accept responsibility for unsatisfactory performance or damage resulting from failure to comply with instructions.	

B. INTRODUCTION

This instruction manual covers series PG/RG3D-187, 218, 250 and 312 Imo pumps. This series of pumps has been designed for use in hydraulic, lubricating and seal oil applications, The model and design construction of each pump can be identified by the designator code on the pump nameplate. Definitions of model designators are identified in figure 1.

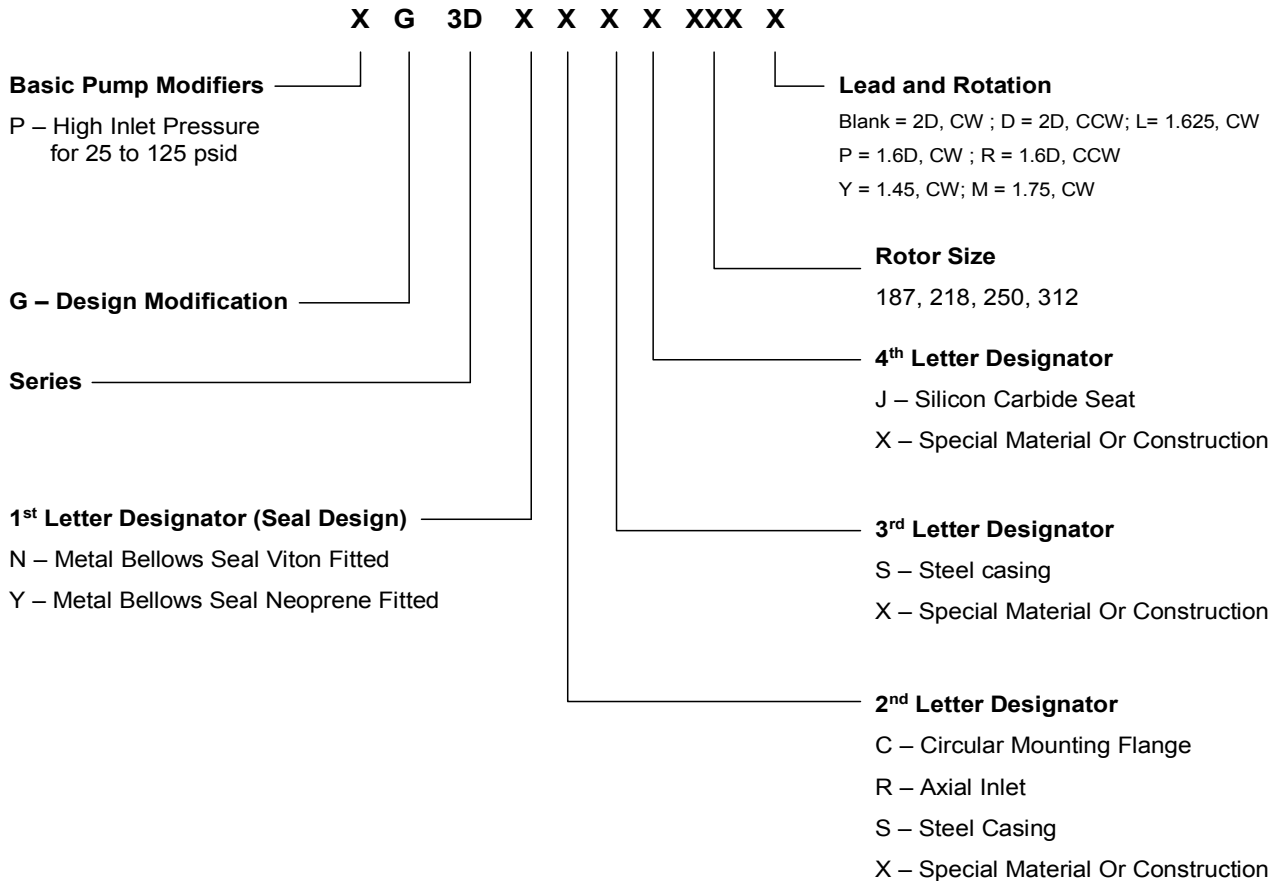
C. DESCRIPTION OF EQUIPMENT

PG/RG3D-187, 218, 250 and 312 series pumps are positive displacement, rotary screw pumps consisting of a precision bored housing which encloses a driven screw (power rotor) and two intermeshing following screws (idler rotors). These screws when rotating form a succession of closures or cavities. As they rotate, fluid is moved axially from inlet port to outlet port in a continuous, uniform flow with minimum fluid pulsation and pump noise.

D. PUMP MODEL IDENTIFICATION

This instruction manual covers Imo Series PG/RG3D-187, 218, 250 and 312 pumps. Model of each pump is identified on pump nameplate. Refer to figure 1 and table 1 for instructional keys when using manual.

Figure 1 – Model Designator Definitions



E. ORDERING INSTRUCTIONS

When corresponding with Imo Pump regarding PG/RG3D-187, 218, 250 and 312 series pumps, refer to pump nameplate, this instruction manual, and assembly drawings as instructed below:

1. From pump nameplate, record pump model number, serial number, and manufactured date.
2. Record instruction manual number, revision, and date.
3. From instruction manual, record figure numbers that apply to replacement part(s).
4. From assembly drawing or parts list (see table 2) provide IDP number(s) and names for replacement part(s).
5. Give above information to your Imo service representative.

Imo sales and service representatives are listed herein and in General Instruction Manual, CA-1.

F. OPERATION

F.1 LIQUID LIMITATIONS

Never operate with thin liquids such as solvents or water. Pump is designed for liquids having general characteristics of oil.

.2 OPERATING LIMITS

CAUTION	ATTENTION
<p>Operating conditions, such as speed, fluid viscosity, temperature, inlet pressure, discharge pressure, filtration, duty cycle, drive type, mounting, etc., are interrelated. Due to these variable conditions, specific application limits may be different from operational limitations. Equipment must not be operated without verifying system operating requirements are within pump's capabilities.</p>	

Under no circumstances should following operating limits (specified in table 1 be exceeded without specific approval from Imo Pump.

Table 1 – Normal Pump Operating and Structural Limits

Condition	Limit
Maximum Speed	3600 rpm 187, 218, 250 2700 rpm for 312
Minimum Viscosity	32 SSU
Maximum Viscosity	2500 SSU
Minimum Liquid Temperature	0°F
Maximum Liquid Temperature (figure 1)	200°F
Maximum Inlet Pressure	300 psig
Maximum Discharge Pressure (Continuous Duty)	500 psig
Filtration	Refer to General Instruction Manual, CA-1
Drive	Direct or Belt
Mounting	Foot mounted in any attitude


G. PARTS LIST


Table 2 – Pump Parts List

IDP	QTY	DESCRIPTION	KIT	IDP	QTY	DESCRIPTION	KIT
1	1	Case		18	4	Cap Screws	
2	1	Housing	XX	19	2	Idlers	XX
3	1	Pipe Plug		20	2	Idler Cups (Idler Cup Design Only)	XX
4	1	Anti-Rotation Tube	X	21	2	Thrust Plate	XX
5	2	O-ring	X	22	1	Thrust Spacer	
6	1	O-ring	X	23	2	Hex Cap Screws	
7	1	O-ring	X	24	2	Washer	
8	1	O-ring	X	25	1	Mechanical Seal**	XX
9	1	Inboard Cover	XX	26	1	Inlet	
10	8	Cap Screws		27	1	Spacer	
11	1	Power Rotor	XX	32	2	Pipe Plug	
13	2	Snap Rings	X	44	1	O-ring	X
14	1	Seal Seat Adapter	XX	46	4	O-rings (312 size only)	X
15	1	Bearing	X	48	1	O-rings (312 size only)	X
16	1	Key		67	3	Pipe Plugs (250 size only)	
17	1	Bearing Retainer		92	1	Retaining Ring (218,250 sizes Only)	X

X = Minor Repair Kit Items.
 XX = Major Repair Kit Items. (Items marked (X) are included in Major Repair Kit.)

H. PUMP MAINTENANCE

	WARNING
<p>Failure to observe precautions while installing, inspecting, and maintaining pump can cause injury to personnel from accidental handling of liquids that may harm skin or clothing, or fire hazard risks from flammable liquids, or injury from high pressure fluid jets.</p>	

	DANGER
<p>BEFORE working on equipment, make sure all power to equipment is disconnected and locked-out.</p>	

H.1 GENERAL COMMENTS

NOTE: Part number identifiers (IDP) contained within parenthesis, such as (9), refer to circled numbers shown on assembly drawings.


De-energize driver before starting with any maintenance action.

H.2 TOOLS REQUIRED

Procedures described in this manual require common mechanics hand tools, a torque wrench, dial indicators for alignment and a suitable lifting device such as slings, straps, etc.

H.3 Disassembly Procedure

Determine pump model identification on pump nameplate to select applicable pump assembly. Refer to that assembly for the following instructions.

	CAUTION
Fluid leakage from disassembly of pump may make floor slippery and can cause personal injury	

NOTE: PG/RG3D pumps incorporate highly finished precision parts that must be handled carefully to avoid damage to critical machined surfaces. Parts removed should be tagged for identification and exact positions in pump carefully noted so new parts, or same parts, are properly replaced without damage

1. Close suction and discharge piping to pump. Vent pressure from pump. Disconnect piping. Remove drain plugs (32) and drain unit. Remove pump from driver, coupling and base plate. Remove coupling hub and key (16).
2. Remove bearing retainer (17) from inboard cover (9) by removing bolts (18).
3. Remove assembled power rotor (11) from inboard cover (9). Removal of power rotor (11) includes removal of snap rings (13), ball bearing (15), seal seat adapter (14), mechanical seal (25) and, in the case of 218 and 250 size, snap ring (92).
4. Disassemble power rotor (11) as follows:
 - a. Using a flat nosed tool, such as a screw driver, remove snap ring (13) located on coupling side of ball bearing (15) from groove in power rotor (11).
 - b. Sealed ball bearing (15) is assembled to power rotor (11) with light press fit. Ball bearing (15) may be removed by using bearing puller or vertical arbor press. When using press, place two pieces of key stock through openings of mechanical seal seat adapter (14) underneath ball bearing (15) on both sides of power rotor shaft. Key stock should be long enough to support power rotor (11) as it is placed in press. Position press ram against power rotor (11) coupling end face. Gently press power rotor (11) through ball bearing (15). Ensure power rotor (11) does not fall to floor once ball bearing (15) is off of its diameter.
 - c. Remove thread side snap ring (13).
 - d. Remove seal seat adapter (14) with stationary seal seat. Remove stationary seal seat with O-ring from seal seat adapter (14).

- e. Remove rotating seat from shaft (11) by loosening setscrew. On size 218 and 250 only, remove snap ring (92)
- f. Remove O-ring (44) or (48) for size 312 from inboard cover.

If only doing seal maintenance, disassembly is complete. Use steps 4 through 8 in reassembly procedure for installation of seal (25) and bearing (15) onto power rotor (11) and re-assembly of power rotor (11) into pump.

If major repair is to be done, continue below.

- 5. Remove inboard cover (9) by removing bolts (10). Remove O-ring (7) from inboard cover (9).
- 6. Remove tube (4) with O-rings (5) and spacer (27) from housing (2) or inboard cover (9). Discard O-rings (5).
- 7. Remove inlet head (26) by removing bolts (10). Remove O-ring (8) from inlet head (26).
- 8. Remove thrust plate (21) and spacers (22) and in the case of the 312 size, O-rings (46) by removing bolts (23) and washers (24).
- 9. Remove cups (20) where applicable from idlers (19) and idlers (19) by screwing them out of housing (2).

	CAUTION	ATTENTION	
Do not permit idlers (19) to drop as they emerge from housing (2).			

- 10. Remove housing (2) from inlet end of case (1) and remove O-ring (6) from housing (2).

H4. Pump Reassembly

NOTE: Prior to reassembly of pump, clean and inspect all parts for nicks and burrs. Replace all worn or damaged parts. Imo Pump recommends replacement of all O-rings, mechanical seal (25) and ball bearing (15) when these parts are disturbed from their previously installed positions. Coat all parts with light lubricating oil to assist in assembly.

- 1. Install O-ring (7) in case (1) and then inboard cover (9) in case with cap screws (10) being sure that seal vent hole (3) is in the top side vertical position. Torque bolts (10) to value on assembly drawing corresponding to pump type.
- 2. Install O-rings (6) in groove in housing (2), O-rings (5) in grooves in housing tube (4) and housing tube (4) in housing (2). Install spacer (27) on housing tube (4).
- 3. Install housing (2) in case (1) being sure that housing tube (4) mates with hole in inboard cover (9).

4. Inspect power rotor (11) shaft and remove any nicks or burrs which are present. Polish power rotor shaft to remove any rust or oxidants that may be present under shaft sleeve. Imo pump recommends replacement of ball bearing (15), mechanical seal (25), and O-ring (44 or (48) for size 312) when these parts are disturbed from their original installed position. All parts should be coated with light lubricating oil to assist in assembly.
5. Assemble power rotor (11) and mechanical seal (25) as follows (Installation is easier with the power rotor vertical):
 - a. If pump size is 218 or 250, install snap ring (92) on shaft. On sizes 187 of 312, snap ring not required.
 - b. Install seal (25) rotating seal on shaft (11) until it seats against either power rotor balance piston or snap ring (92). Tighten seal set screws.
 - c. Install O-ring in groove of mechanical seal stationary seat. Install seat including O-ring in seal seat adapter (14) ensuring that groove in back of stationary seat mates to spring pin in seal seat adapter (14). Clean seal face with isopropyl alcohol and a lint free rag. Put a small amount of clean system fluid or light oil on seal running face. Install the rotating ring running face which is installed in the seal seat adapter (14) against the stationary seat face.
 - d. Install inner snap ring (13) in groove of power rotor (11).
 - e. Press bearing (15) on power rotor (11), pressing only on inner race of ball bearing (15) using an installation sleeve until it is located next to inner snap ring (13). Be sure to line up seal seat adapter (14) so that locates on the face of the bearing (15) nears its OD.
 - f. Install outer snap ring (13) in groove of power rotor (11).
6. Install O-ring (44) or (48) for size 312 in seal bore of inboard cover (9).
7. Install assembled power rotor (11) in pump, centering all parts as they enter inboard cover (9). Align one of openings in spacer (14) over drain in inboard cover (9).
8. Install bearing retainer (17) on inboard cover (9) using bolts (18) Torque bolts (18) to value on assembly drawing corresponding to pump type.
9. Install idlers (19) into housing (2) by meshing their threads with power rotor thread.
10. If idler cup design, install cups (20) on idlers (19).
11. Install bolts (23) and lock washers (24) in thrust plate (21). If pump is 312 size, install O-rings (46) on bolts (23) (These O-rings should be installed evenly spaced along bolt length, two to a bolt.) Install spacers (22) on bolts (23).
12. Install thrust plate assembly including thrust plate (21), washers (24), bolts (23) and spacers (22) and O-rings (46) if 312 size on housing (2). Torque bolts (23) to value on assembly drawing corresponding to pump type.

13. Install O-ring (8) in groove in inlet head (26) and inlet head on case (1) with bolts (10). Torque bolts (10) to value on assembly drawing corresponding to pump type.

NOTE: Inlet head (26) can be rotated and repositioned in 90 degree increments to suit suction piping. To change inlet position remove bolts (10) and rotate inlet head (28) to desired position. Install bolts (10) and torque to proper values indicated on assembly drawing.

14. Install coupling hub key (16). Install and align pump and driver as specified in General Instruction Manual, CA-1.

I. TROUBLESHOOTING

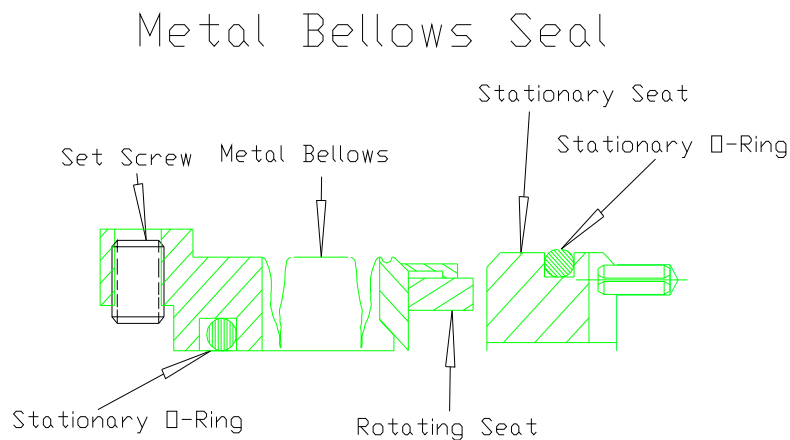
For assistance with troubleshooting see the General Instruction Manual, CA-1.

J. FIELD AND FACTORY SERVICE AND PARTS

Imo Pump maintains a staff of trained service personnel that can provide pump installation, pump start-up, maintenance/overhaul and troubleshooting supervision as well as installation and maintenance training.

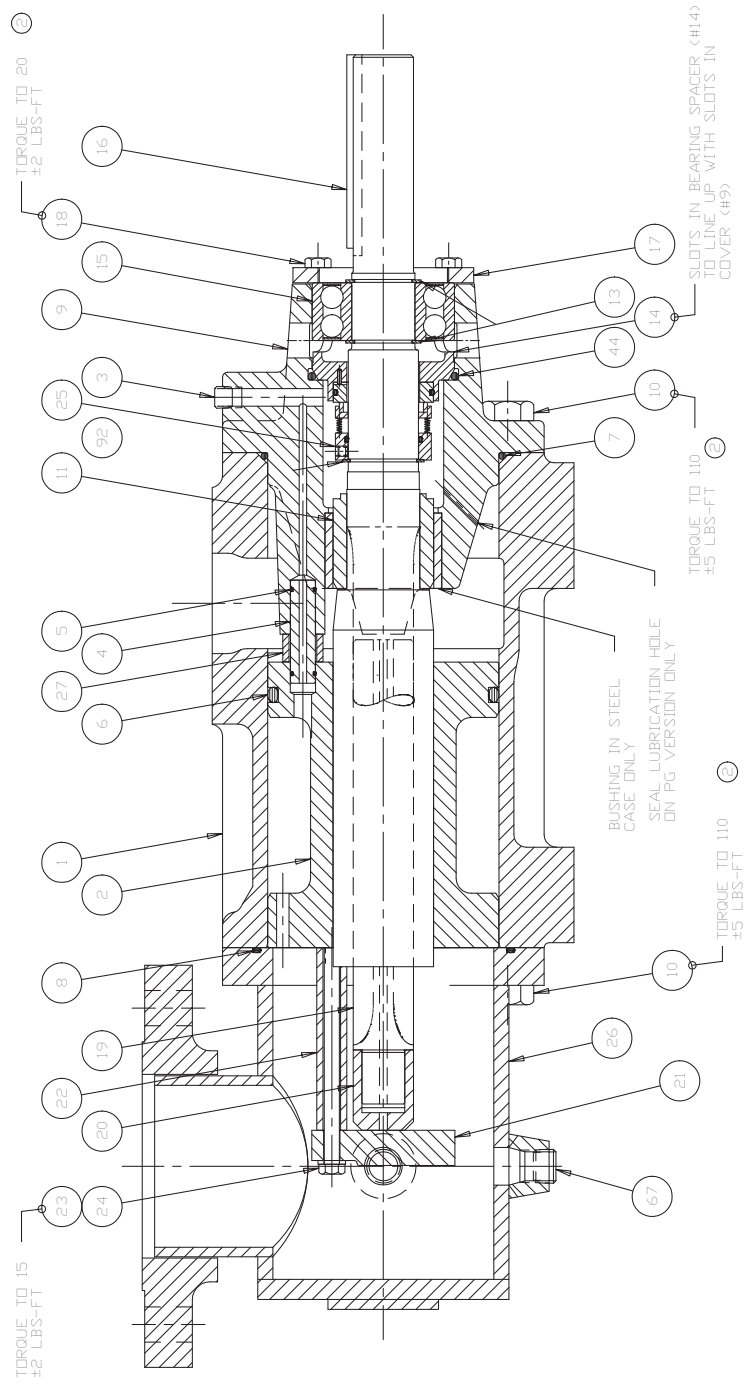
Our factories provide maintenance as well as overhaul and test facilities the in event user prefers to return pumps for inspection or overhaul. Factory-overhauled pumps are normally tested and warranted "as-new" for a period of one year from date of shipment. For either field service or factory overhaul assistance, contact your local Imo Sales Office or representative at Technical/ Customer Service Department in Monroe, NC, USA.

Most pumps have repair kits available. Minor Repair Kits are used to repair leaking seals, bad bearings and/or for re-assembly after pump tear-down. They include (as applicable) pump shaft seals, packing, all gaskets/O-rings and bearings. Major Repair Kits are sufficient to rebuild completely worn-out pumps to "as-new" condition. They include all parts found in Minor Repair Kits plus all major internal parts subject to wear. Since kits have all necessary parts, kit purchase is preferred rather than selecting individual parts. When parts are individually selected from Parts List, some needed components are often overlooked. In addition, mixing worn or used parts with new parts risks rapid wear and shortened service life from new parts.



THE INFORMATION CONTAINED IN THIS DOCUMENT IS THE CONFIDENTIAL AND PROPRIETARY INFORMATION OF CIRCOR INTERNATIONAL. IT IS NOT TO BE REPRODUCED OR TRANSMITTED IN ANY FORM OR BY ANY MEANS, ELECTRONIC OR MECHANICAL, INCLUDING PHOTOCOPYING, RECORDING, OR BY ANY INFORMATION STORAGE AND RETRIEVAL SYSTEM, WITHOUT THE PRIOR WRITTEN PERMISSION OF CIRCOR, AND WILL ONLY BE USED FOR CONDUCTING BUSINESS WITH CIRCOR.

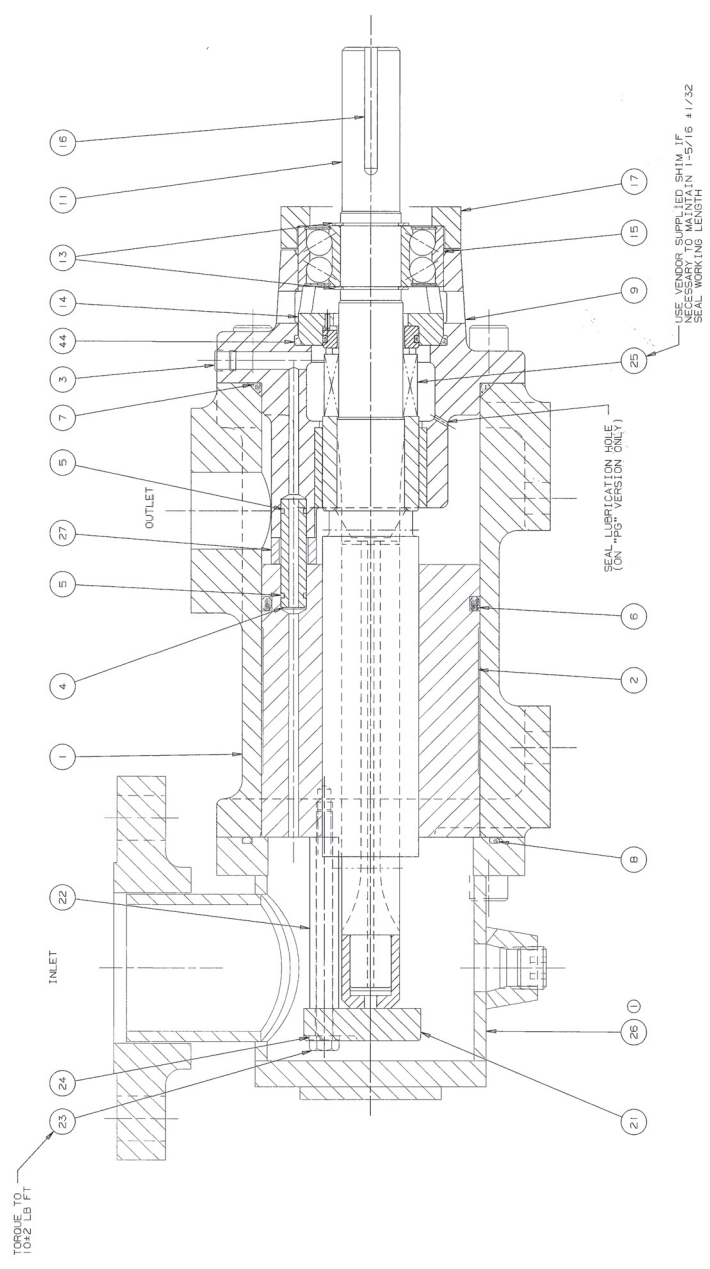
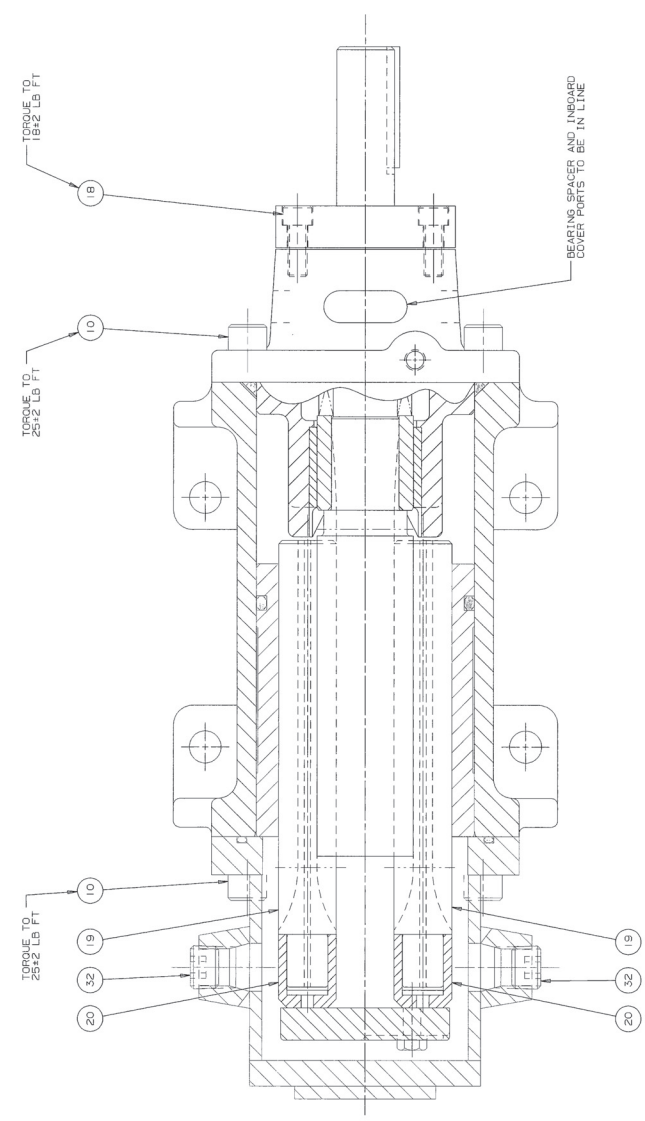
REVISION HISTORY						
CHG NO.	ZONE	REV	DESCRIPTION	DATE	BY	APPROVED
01-0139	ALL	D1	PLG WAS SKT W/D ADDED DRAINS	10-09-95	WLV/AEL	
02-0139	ALL	D2	CHANGED FORMAT REVISED TORQUES	03-16-01	BMR/BMR	



UNDRN	DRAWN	CSH	11-18-93
PROCS	CHECKED	JUC	03-09-94
UNLESS OTHERWISE SPECIFIED			
1. ALL DIMENSIONS ARE IN INCHES UNLESS OTHERWISE SPECIFIED			
2. FRACTIONAL DIMENSIONS ON UNFINISHED DIMENSIONS			
3. DIMENSIONS ON DIMENSIONS ARE IN INCHES UNLESS OTHERWISE SPECIFIED			
4. UNFINISHED DIMENSIONS ARE IN INCHES UNLESS OTHERWISE SPECIFIED			
5. DIMENSIONS ON DIMENSIONS ARE IN INCHES UNLESS OTHERWISE SPECIFIED			
6. ANGLES ARE IN DEGREES UNLESS OTHERWISE SPECIFIED			
7. TAPERED PIPES TO ANSI B1.20.1			
FIRST ORDER			
E-S109			
C			
59180			
SF6020			
SCALE 1/2			
WEIGHT			
BHEET 1 OF 1			

CIRCOR IMO®
ASSEMBLY GENERIC (P.R.) GDDN, J-280
REVISED TORQUE
SF6020

WT	1.02 LBS
MATERIAL	
AS SPEC	
LOCAL	
PROCESS	



NOTES:
1. INSTALL NAMEPLATES PER ES 3.36.3.

REV	DESCRIPTION	DATE	BY	CHKD
01	CHANGED INLET HEAD	2-14-95	JMB	REL
02	ALTERATION			

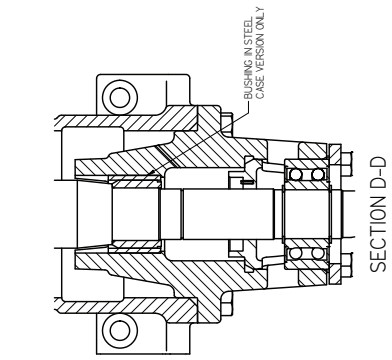
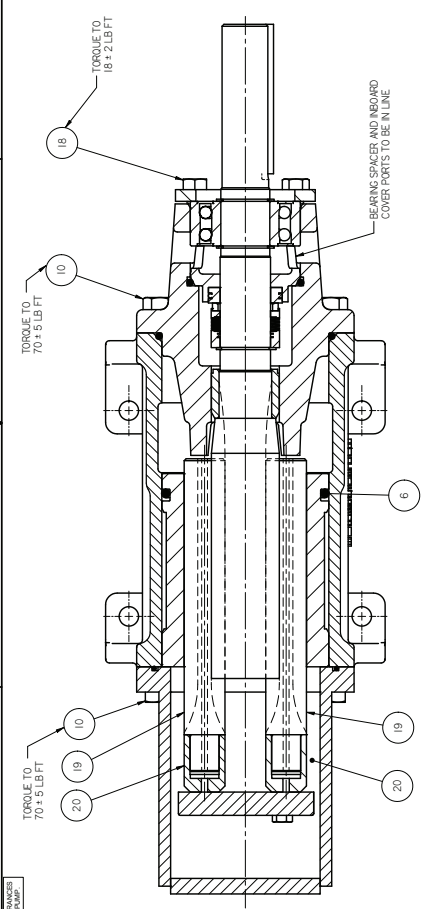
IMI Industries Inc.
 IMI Pump Division
 P.O. Box 8020
 Morrisville, NC, USA 27561-8020

CASE NO: 59190
 DRAWN: JMB
 DATE: 2-14-95
 CHECKED: JMB
 DATE: 3-25-94
 FIRST ORDER SYMBOL: 03552
 TITLE: ASSEMBLY GENERIC (PG. #6) 30NS-1-B7
 ASSEMBLY: SF6032

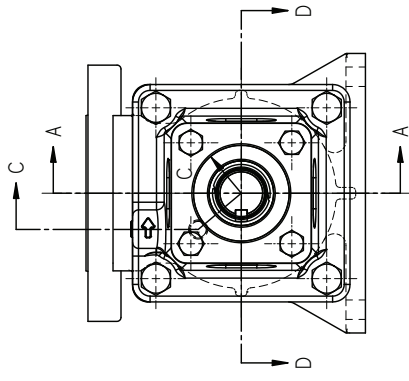
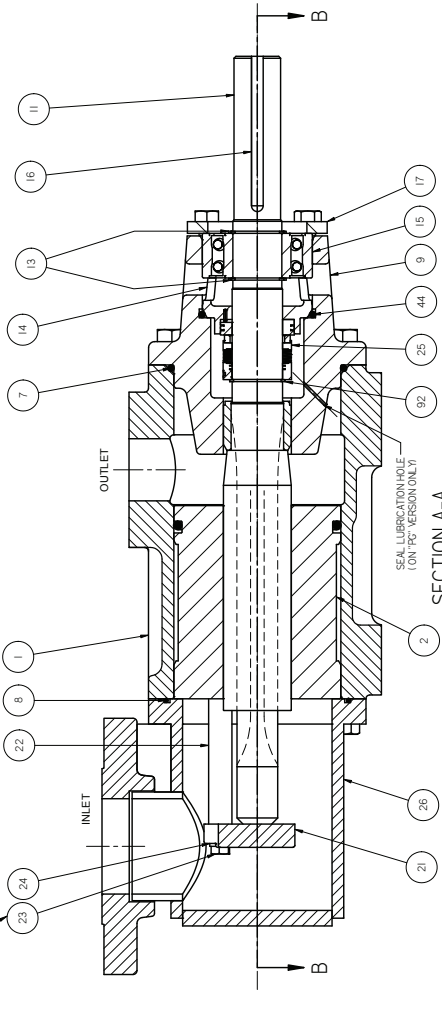
8 7 6 5 4 3 2 1

THIS DOCUMENT IS THE SOLE PROPERTY OF IMO PUMPS AND IS FURNISHED SUBJECT TO THE RESTRICTIONS OF DISCLOSURE, DIMENSIONS AND TOLERANCES ARE PROTECTIVE TO IMO PUMP. THIS DRAWING IS NOT TO BE USED FOR ANY PURPOSE WITHOUT THE EXPRESS WRITTEN PERMISSION OF IMO PUMP.

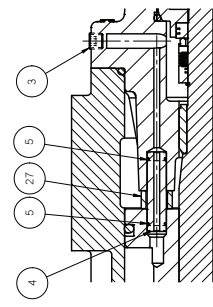
DATE	BY	APPROVED			
12-02-98	ALL	2 REDRAWN ON CAD, UPDATED TORQUES	6-22-12	ERH	CHH



SECTION B-B



AUXILIARY VIEW FOR INLET HEADS REQUIRING THREDDOLET DRAINS AND PLUGS



SECTION C-C

NOTES:
1. INSTALL NAMEPLATES PER ES 3.36.3.

REV	DATE	DESCRIPTION
1	5-5-94	5-5-94
2	5-5-94	5-5-94
3	5-27-94	5-27-94

UNLESS OTHERWISE SPECIFIED:
1. DIMENSIONS ARE IN INCHES AND DECIMAL FRACTIONS.
2. DIMENSIONS IN PARENTHESES ARE FOR INFORMATION ONLY.
3. DIMENSIONS IN SQUARE BRACKETS ARE FOR INFORMATION ONLY.
4. DIMENSIONS IN PARENTHESES ARE FOR INFORMATION ONLY.
5. DIMENSIONS IN PARENTHESES ARE FOR INFORMATION ONLY.

DYNAMIX	NRS	5-5-94	5-5-94
CRITICAL	NRS	5-5-94	5-5-94
APPROVED	MLC	5-27-94	5-27-94
METHOD			

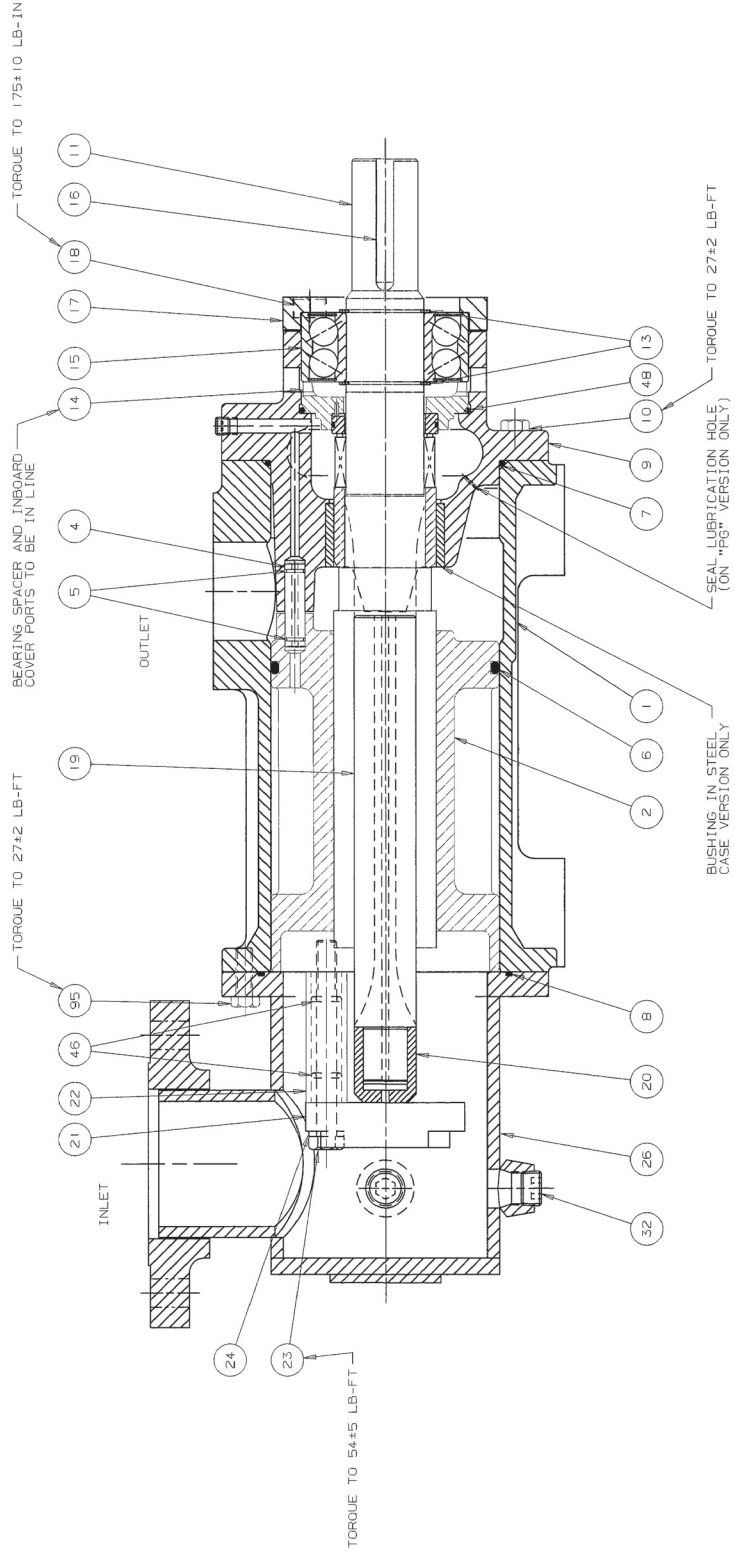
IMOPump
1770 Airport Road
Kinston, NC USA
28511-5020

ASSEMBLY
IPRIG3DN-J-218_

REV	DATE	DESCRIPTION
D	5-9-08	5-9-08

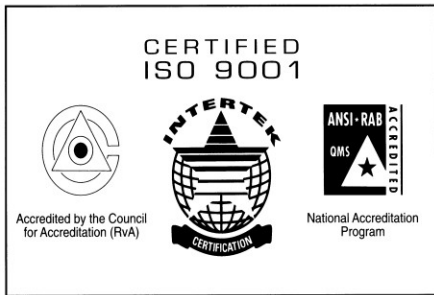
ES USA
3212/255
150 LBS
1 of 1

MATERIAL		WT	LSB
ES SPEC			
COML			
PROCESS			



NOTES:
1. INSTALL NAMEPLATES PER ES 3.36.3.

96-01047 B212	2	ADDED IDP NO'S 8 & 48	1-2-97	JTT	46C
95-01162 B-4	1	PART NO 18 TORQUE WAS LB-FT	10-28-95	NRS	MJC
CHG NO	ZONE	CHG	ALTERNATION	DATE	BY
UNLESS OTHERWISE SPECIFIED: 1. ALL DIMENSIONS ARE TO DIMENSIONS 2. TOLERANCES UNLESS OTHERWISE SPECIFIED: 3. DIMENSIONS ARE TO DIMENSIONS UNLESS OTHERWISE SPECIFIED 4. DIMENSIONS ARE TO DIMENSIONS UNLESS OTHERWISE SPECIFIED 5. DIMENSIONS ARE TO DIMENSIONS UNLESS OTHERWISE SPECIFIED 6. DIMENSIONS ARE TO DIMENSIONS UNLESS OTHERWISE SPECIFIED					
CASE CODE: 59180 TITLE: ASSEMBLY GENERIC (P, R) 163DN J-312 DRAWN: NRS DATE: 7-12-95 SCALE: 1/2 CHECKED: NRS B-3-95 FIRST ORDER: 097920 APPD: SYMBOL: SFG100					
Imo Industries Inc. IMD Pump Division Airport Road P.O. Box 5020 Monroe, NC, USA 28111-5020					
ASSEMBLY METHOD:					



CIRCOR

1710 Airport Road
PO Box 5020
Monroe, NC USA
28111.5020

Tel: +1. 877.853.7867

Email: cc@circor.com

Web: www.circorpt.com

